

Points of Interest



Parks

🚲 1	Anderson	🚲 🚶 15	Crescent Pointe
🚲 2	Art & Myra Bright	🚲 16	Cy Miller
🚲 🚶 3	Barracks	17	Eastgate
🚲 4	Bee Creek	🚲 18	Edelweiss
🚲 5	Billie Madely	🚲 19	Edelweiss Gartens
6	Brian Bachmann	🚲 20	Emerald Forest
🚲 7	Bridgewood	🚲 21	Etonbury
🚲 8	Brison	🚲 22	First Down
🚲 🚶 9	Brothers Pond	🚲 23	Gabbard
🚲 10	Carter’s Crossing	🚲 24	Georgie K. Fitch
🚲 🚶 11	Castlegate	🚲 25	Greens Prairie Reserve
🚲 12	Castlerock	🚲 26	Huntington Trail
🚲 13	Cove of Nantucket	🚲 🚶 27	Jack & Dorothy Miller
🚲 🚶 14	Creek View	🚲 28	John Crompton

🚲 29	Lemontree	🚲 44	Southern Oaks
🚲 30	Lick Creek	🚲 🚶 45	Southwest
31	Lions	🚲 46	Steeplechase
🚲 32	Longmire	🚲 🚶 47	Stephen C. Beachy Central
33	Luther Jones	🚲 🚶 48	Thomas
🚲 34	Merry Oaks	🚲 49	University
🚲 35	Midtown Reserve	🚲 50	Veterans Park & Athletic Comp.
🚲 36	Northgate	🚲 51	W.A. Tarrow
🚲 37	Oaks	🚲 🚶 52	Wallace Lake
38	Parkway	🚲 53	Wildwood
🚲 39	Pebble Creek	🚲 54	Windwood
🚶 40	Phillips	🚲 🚶 55	Wolf Pen Creek
🚲 🚶 41	Reatta Meadows	🚲 56	Woodcreek
🚲 42	Richard Carter	🚲 57	Woodland Hills
🚲 🚶 43	Sandstone		

🚲 JOGGING/WALKING TRAILS

🚶 EXERCISE STATIONS



Facilities/Services

1 Adamson Lagoon	12 George Bush Presidential Library
2 Arts Council	13 Larry J. Ringer Library
3 Bob & Wanda Meyer Senior Center	14 Lick Creek Nature Center
4 Brazos Valley Veterans Memorial	15 Lincoln Recreation Center
5 Cindy Hallaran Pool	16 Post Oak Mall
6 College Station City Hall	17 Post Office - College Station
7 College Station Municipal Court	18 Post Office - Northgate
8 College Station Police Station	19 Southwood Community Center
9 College Station Utility Service Center	20 Texas A&M University
10 Easterwood Airport	21 Visit College Station
11 G. Hysmith Skatepark	22 Wolf Pen Creek Amphitheater



Schools

1 A&M Consolidated High School	11 Int’l. Leadership of Texas School
2 A&M Consolidated Middle School	12 Oakwood Intermediate School
3 College Hills Elementary School	13 Pebble Creek Elementary School
4 College Station High School	14 Pecan Trail Intermediate School
5 College Station Middle School	15 River Bend Elementary School
6 College View High School	16 Rock Prairie Elementary School
7 Creek View Elementary School	17 South Knoll Elementary School
8 Cypress Grove Intermediate School	18 Southwood Valley Elementary
9 Forest Ridge Elementary School	19 Spring Creek Elementary School
10 Greens Prairie Elementary School	20 Wellborn Middle School

Shared use paths are...

All-weather and accessible paths shared by bicyclists and pedestrians along a greenway or road corridor. These paths are typically 10-12 feet wide, although some may be 8 feet in width. They are also known as greenway trails that follow linear open space corridors along natural features such as creeks and rivers and the associated floodplain or riparian buffer.

Grade-separated crossings are...

Identified on this map as an overpass/underpass that has a sidewalk or other improvements to assist bicyclists and pedestrians in crossing major roads.

Tips for shared use paths

- Share the path. Show respect for all users.
- Bicyclists must yield to pedestrians. Pedestrians have the right-of-way on shared use paths and sidewalks.
- All path users must keep to the right half of the path except when passing or turning left.

- Signal when passing. Bicyclists: sound your bell or call out a warning as you approach.
- Respect nature. Ride or walk only on designated paths to protect parks, natural areas, private property, habitat, and yourself.
- Look both ways at path crossings.
- Keep pets on a short leash and clean up after them.
- No motorized vehicles are allowed trails.
- Bicyclists should slow down when path is busy, on hills, curves and under/over bridges.

Safety on shared use paths

- Keep fully alert and aware of your surroundings while exercising outdoors.
- Obey all shared-use paths and road signs and use care when crossing streets that intersect with shared-use paths.
- Don’t leave valuables in your private vehicle. If valuables are left in a vehicle place them in a location that is out of sight.
- Carry identification, and tell someone where you are going and when you will return, or exercise with a companion.
- Report suspicious or criminal activity to the College Station Police Department.
- Use caution during rain events.

BICYCLE, PEDESTRIAN AND GREENWAYS PROGRAM

The City of College Station’s Bicycle, Pedestrian, and Greenways Program strives to improve bicycle and pedestrian access and mobility throughout the City. In January 2010, College Station City Council approved a citywide Bicycle, Pedestrian, and Greenways Master Plan that identifies goals to improve connectivity and accessibility, increase safe bicycling and walking outdoors, and encourage environmental stewardship. For more information about the program, to learn how you can get involved, or for additional maps, visit [cstx.gov/bikepedgreenways](http://cstx.gov/bikepedgreenways).

CONTACT US

In case of emergency .....	call 911
Police Non-emergency .....	979-764-3600
Bicycle, Ped. and Greenways .....	979-764-3570
For additional maps .....	979-764-3570
Road Maintenance .....	<a href="http://cstx.gov/SeeClickFix">cstx.gov/SeeClickFix</a>

**CITY OF COLLEGE STATION**  
Planning and Development Services  
1101 Texas Avenue  
College Station, Texas 77842



# BIKE MAP INFO GUIDE

BIKE LANES & ROUTES • SHARED-USE PATHS  
PARK INFORMATION

[CSTX.GOV/BIKEPEDGREENWAYS](http://CSTX.GOV/BIKEPEDGREENWAYS)



A bike lane is...

A designated part of the roadway, typically 5-7 feet in width, that is striped, signed and has pavement markings to be used exclusively by bicyclists. Parking is not allowed in a bike lane.



A bike route is...

A roadway designated with signage\* that is shared by both bicyclists and motor vehicles. Typically, the road will have lower traffic speeds and volumes or may be a common route for bicyclists through high-demand areas.

*\*Many routes designated on this map do not have bike route signs. Efforts to install these signs continue.*



Share the road

You may also see a Share the Road sign along roadways to increase awareness of motorists and enhance the safety of bicyclists.

*Bicyclists have the same rights and responsibilities as motorists.*

**BICYCLES ARE ALLOWED ON ANY CITY ROAD.**

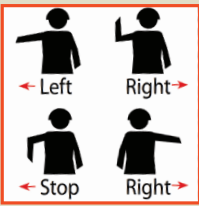
Bicycle theft prevention

Locking your bike to a bicycle rack can prevent most bicycle thefts. Use a good quality “case-hardened” or “hardened” U-bolt lock. Lock the frame and rear wheel of your bike to the bicycle rack. Do not lock your bike to trees, parking meters, sign posts, hand railings, etc.

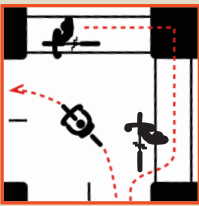
If you are a Texas A&M faculty, staff or student, you must register your bicycle with Texas A&M Transportation Services. Help authorities recover your bike if it is lost or stolen and be a part of the growing bike program at Texas A&M! For more information, visit [transport.tamu.edu](http://transport.tamu.edu).

*This document was prepared by City of College Station staff from a variety of sources and should be used as a guide for bicycling opportunities within College Station. It reflects knowledge of facilities at time of publication and is subject to change without notice. The accuracy of this data is limited to the validity and accuracy of available data, and therefore the City makes no representations or warranties as to the accuracy of the data. The City does not warrant the safety or assume responsibility for bicyclists using any street or route shown on the map. This map is intended for informational purposes only.*

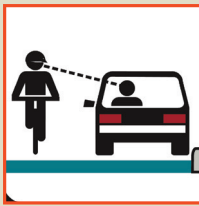
TIPS FOR ON-STREET BICYCLING



USE HAND SIGNALS



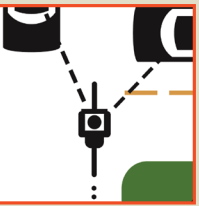
CHOOSE THE BEST WAY TO MAKE A LEFT TURN



MAKE EYE CONTACT



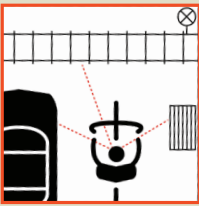
IN FRONT OR FAR BEHIND, NOT BESIDE



BE CAREFUL AT INTERSECTIONS



RIDE TO SEE AND BE SEEN



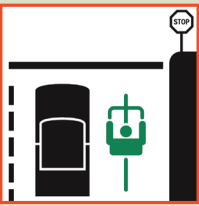
AVOID ROAD HAZARDS



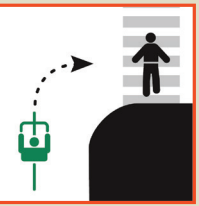
GO SLOW ON SIDEWALKS



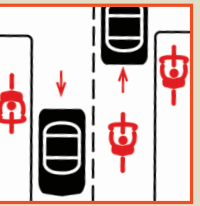
KEEP CLEAR OF DOOR ZONE



OBEY TRAFFIC SIGNS, SIGNALS



RESPECT PEDESTRIAN RIGHTS

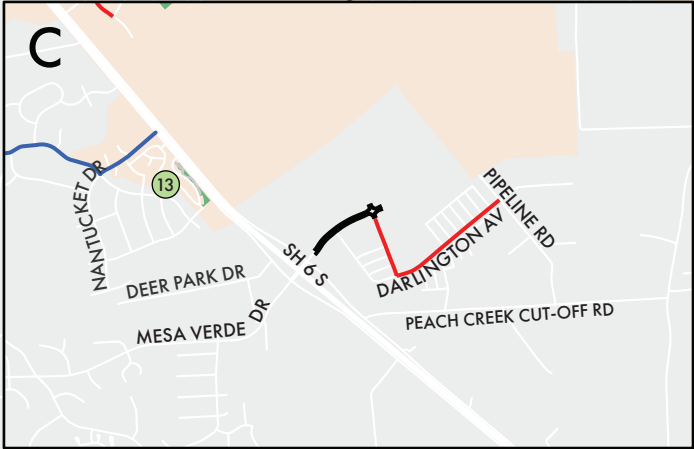
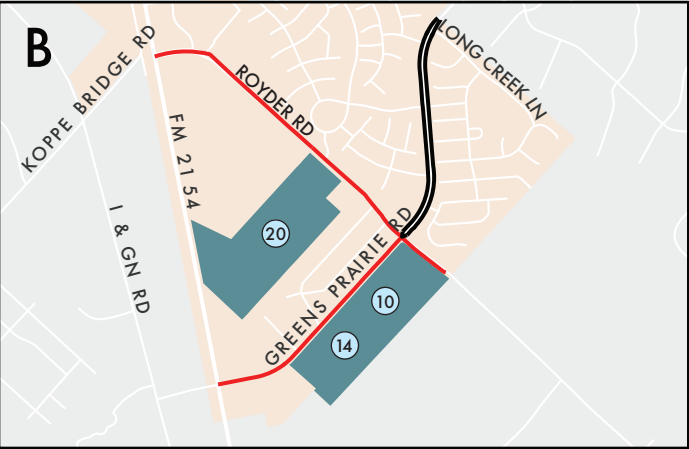


WHILE ON THE ROAD NEVER RIDE AGAINST TRAFFIC

Some images provided by the City of Portland, Oregon, the City of Bellevue, Washington, the City of Calgary, California, and the City of San Jose, California.



CITY OF COLLEGE STATION  
BIKE MAP & INFO GUIDE



**LEGEND**

	Existing Bike Lane		Bike Share Geofence
	Existing Bike Route		Texas A&M University
	Existing Shared Use Path		Schools
	Under Construction Shared Use Path		Parks
	Existing Grade Separated Crossing		City Limits
	Paved Park Pathway		Brazos County
	Natural Park Pathway		

