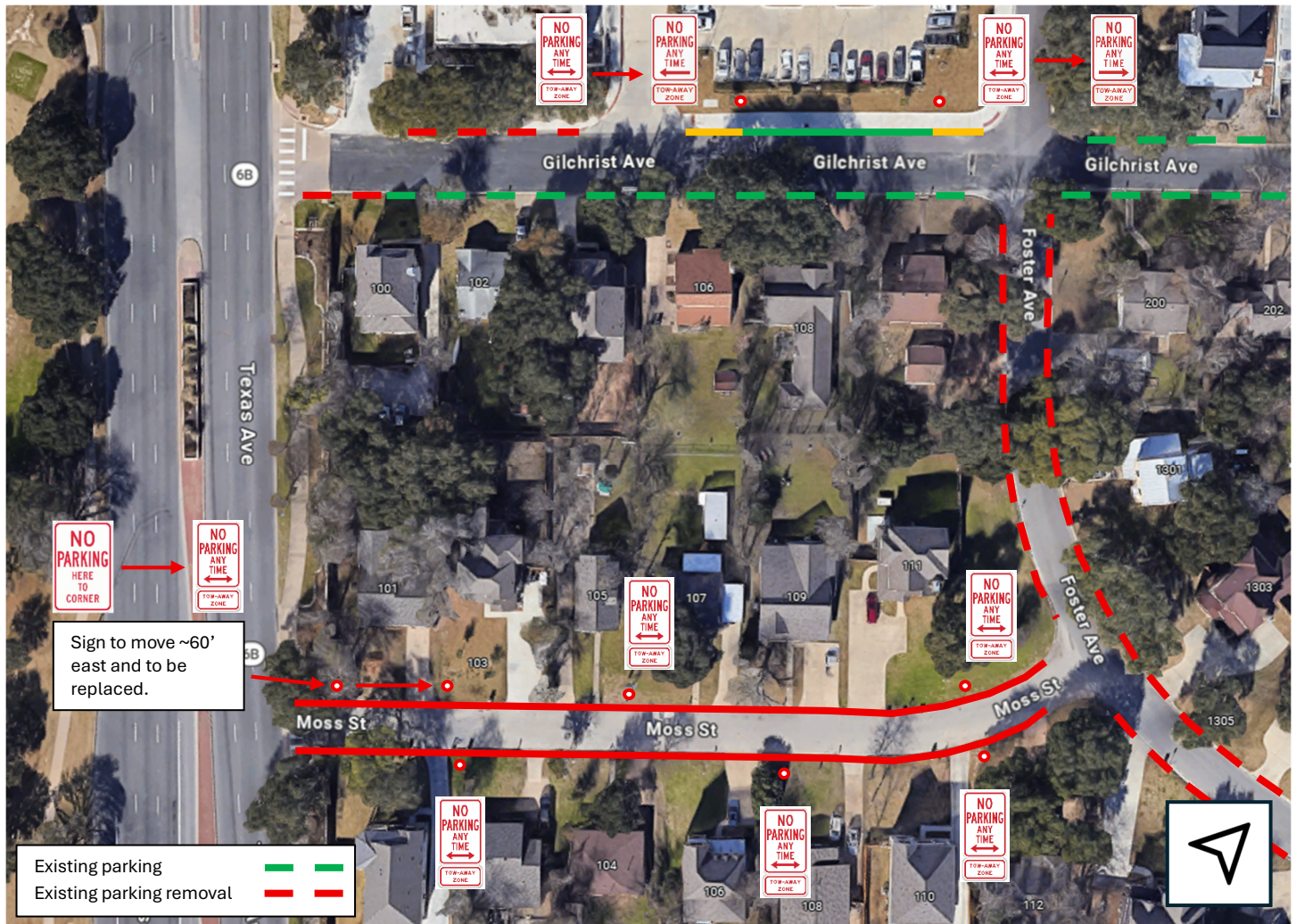


**Sec. 38-1014. - Traffic Schedule XIV, no parking here to corner and no parking any time.**

Exhibit May 2026: Gilchrist Avenue and Moss Street



**EXISTING “NO PARKING” TO BE RESTORED (REPEAL ORDINANCE)**

<i>Traveling on</i>	<i>Between</i>	<i>Travel Direction</i>	<i>Street Width</i>
Gilchrist Avenue	Texas Ave and Foster Ave	West	No parking from here to corner and no parking any time 35' (back of curb to back of curb)

**EXISTING “NO PARKING” (REVISED SIGN, UPDATED ORDINANCE, ETC.)**

<i>Traveling on</i>	<i>Between</i>	<i>Travel Direction</i>	<i>Street Width</i>
Gilchrist Avenue	Texas Avenue and Foster Avenue	Southwest	No parking any time adjacent to Visit College Station building; No parking from sign to corner adjacent to City Hall 35' (back of curb to back of curb)

**PROPOSED “NO PARKING” (CREATE NEW ORDINANCE)**



<b><i>Traveling on</i></b>	<b><i>Between</i></b>	<b><i>Travel Direction</i></b>		<b><i>Street Width</i></b>
Moss Street	Texas Avenue and Foster Avenue	All directions	No parking any time	27' (back of curb to back of curb)