



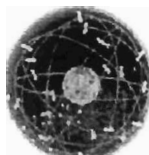
**College Station
Brazos County, TX
Photogrammetric Control Survey**

February 2, 2005

For

**Kucera International, Inc.
105-006**

GEO METRICS
GPS, INC.



236 Cambridge St., Fredericksburg, VA. 22405
(540)372-3499 fax (540)371-5703
www.geometrics-gps.com

KUCERA INTERNATIONAL INC.

P H O T O G R A M M E T R I C C O N S U L T A N T S

Corporate Headquarters

38133 Western Parkway, Willoughby, Ohio 44094

Tel: (440) 975-4230, Fax: (440) 975-4238

Email: map@kucerainternational.com www.kucerainternational.com

PACKING SLIP

SHIP TO: City of College Station
 Public Works
 1101 Texas Avenue
 College Station, TX 77842

ATTN: Allan Gibbs

DATE: 9/30/09

KUCERA JOB NO.: 58533

RE: College Station TX Aerial Mapping Project

QUANTITY	SCALE	DESCRIPTION
1		Copy of ground survey report as discussed

DATE OF AERIAL PHOTOGRAPHY:

PURCHASE ORDER NO. :

SHIPPED VIA: UPS

BY: JA Jr/ar

PLEASE REFER TO KUCERA JOB NUMBER ON ALL CORRESPONDENCE

Known Shortage or Damage

Check carefully the number of pieces and the condition of the shipment with the carrier's delivery receipt and if a problem/error is evident, contact us immediately.

Concealed Shortage or Damage

If loss or damage is not evident at time of delivery, it should be reported to shipper and carrier immediately on discovery so that inspection or notification can be made. Carrier regulations require that such claims be made within 15 days of delivery. Shipping carton and packing materials should be saved for inspection.

Table of Contents

- I. Target Report**
- II. Existing Control Data sheets**
- III. New Control Data sheets / Descriptions**
- IV. Field Map**

Report of Survey

GeoMetrics GPS, Inc., of Fredericksburg, Virginia (under contract to Kucera International, Inc.) performed a photogrammetric ground control survey throughout the southern portion of Brazos County, Texas. The purpose of the survey was to provide horizontal and vertical control for mapping. The survey was performed from January 26, 2005, through January 31, 2005.

The ground control for aerial photography was targeted on January 28, 2005. Twenty-five (25) photogrammetric control points were targeted. Seventeen (17) of the targeted points were existing county marks stamped COLLEGE STATION, Mon. #, 1994. The remaining eight (8) control points were 18 inch long rebar with a yellow plastic cap driven flush with the ground surface, set by GeoMetrics. The set points were designated 1 through 8 and were sketched and referenced for future recovery. The sketches and photos were submitted earlier in a targeting report dated February 2, 2005.

The eight (8) photogrammetric control points set by GeoMetrics were surveyed January 29, 2005, using Global Positioning Systems (GPS) Technology. GeoMetrics used Trimble 4000ssi dual frequency geodetic GPS receivers. Fast static carrier phase methodology was used to determine vectors from existing survey control stations to and through the new control stations. The vectors were combined to form a network, which was adjusted by the method of least squares. County monuments 101, 135 and 261 were held fixed to establish positions for the eight (8) new points labeled 1 through 8.

Final adjustments were calculated in NAD83 Texas State Plane coordinates system, Central Zone. The vertical datum is NGVD29. The U.S. Survey Foot definition is used to convert from meters (1 meter = 39.37/12 feet).

College Station, Brazos County, Texas

Existing Points

<u>Date</u>	<u>Designation</u>	<u>Target Size</u>	<u>Target Shape</u>	<u>Remarks</u>
1/28/2005	101	12" X 4' X 8'	T	0.20' above mark
1/28/2005	*107	12" X 4' X 8'	T	0.30' above mark
1/28/2005	110	12" X 8' X 8'	+	flush with mark
1/28/2005	117	12" X 4' X 8'	T	0.05' above mark
1/28/2005	123	12" X 8' X 8'	+	flush with mark
1/28/2005	128	12" X 4' X 8'	T	flush with mark
1/28/2005	135	12" X 4' X 8'	T	0.10' above mark
1/28/2005	144	12" X 8' X 8'	+	flush with mark
1/28/2005	153	12" X 4' X 8'	T	flush with mark
1/28/2005	*158	12" X 4' X 8'	T	flush with mark
1/28/2005	159	12" X 4' X 8'	T	flush with mark
1/28/2005	164	12" X 4' X 8'	T	flush with mark
1/28/2005	203	12" X 8' X 8'	+	0.10' above mark
1/28/2005	220	12" X 8' X 8'	+	flush with mark
1/28/2005	242	12" X 8' X 8'	+	flush with mark
1/28/2005	256	12" X 4' X 8'	T	0.20' above mark
1/28/2005	261	12" X 4' X 8'	T	flush with mark

* Stations 107 and 158 replace Stations 122 and 147 respectively, which were not found.

New Points

1/28/2005	1	12" X 8' X 8'	+	flush with mark
1/29/2005	2	12" X 8' X 8'	+	flush with mark
1/29/2005	3	12" X 8' X 8'	^	flush with mark
1/29/2005	4	12" X 8' X 8'	^	flush with mark
1/29/2005	5	12" X 8' X 8'	^	flush with mark
1/29/2005	6	12" X 8' X 8'	^	flush with mark
1/29/2005	7	12" X 8' X 8'	^	flush with mark
1/29/2005	8	12" X 8' X 8'	^	flush with mark

CITY OF COLLEGE STATION

HORIZONTAL CONTROL MONUMENT

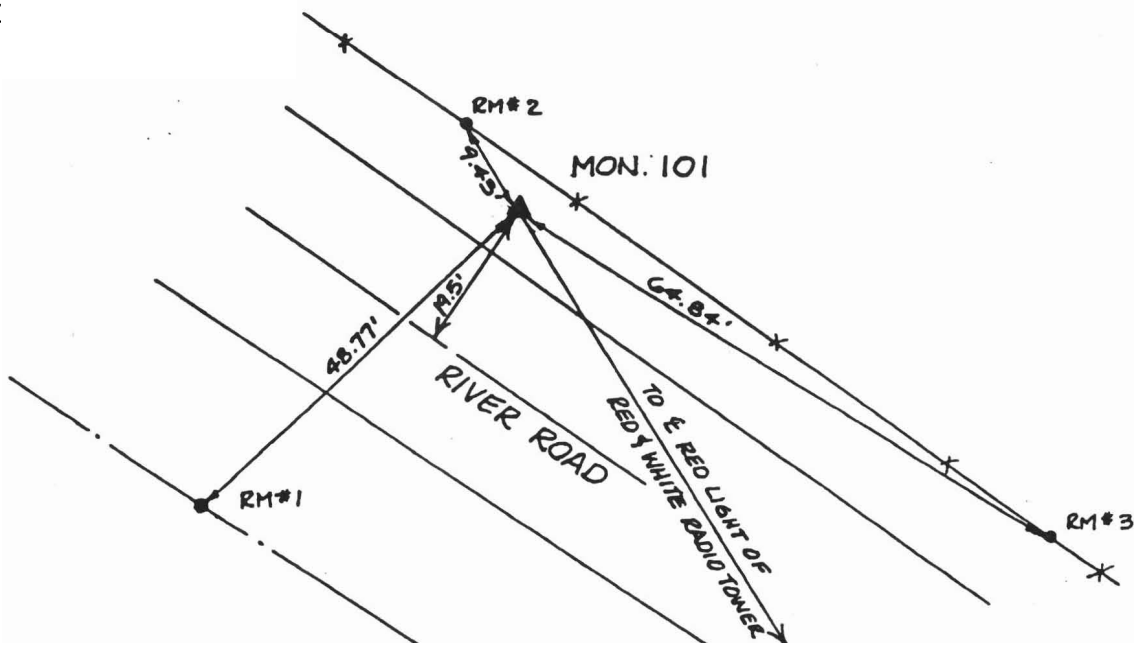
MONUMENT NAME 101		DATE ESTABLISHED 1994		STATE: TEXAS		COUNTY BRAZOS	
NAD-27 GEODETIC POSITION				NAD-83 GEODETIC POSITION			
LATITUDE		N 030° 32' 59.30552"		LATITUDE		N 030° 33' 00.03457"	
LONGITUDE		W 096° 23' 13.34621"		LONGITUDE		W 096° 23' 14.21430"	
NAD-27 TEXAS STATE PLANE COORDINATES CENTRAL ZONE				NAD-83 TEXAS STATE PLANE COORDINATES CENTRAL ZONE (US Survey Feet)			
Y COORDINATE		343216.744		Y COORDINATE		10185798.719	
X COORDINATE		3241933.058		X COORDINATE		3538412.491	
CONVERGENCE =		2° 01' 57.26"		CONVERGENCE =		2° 01' 56.82"	
SCALE FACTOR =		0.9999126		SCALE FACTOR =		0.9999126	

G.P.S ELEVATION : 287.19 ft. (NGVD 1929 MEAN SEA LEVEL DATUM)

AZIMUTH MARK RADIO TOWER		ASTRONOMIC AZIMUTH (FROM NORTH) N 177° 54' 49"		GRID AZIMUTH (FROM NORTH) N 175° 52' 52"	
REFERENCE MARK DESCRIPTION				DISTANCE (ft)	DIRECTION
CENTER OF RED LIGHT ON RED AND WHITE RADIO TOWER					000°00'00"
RM 1: P.K. NAIL WITH SHINER NORTHEAST FACE OF P.P.				48.77'	075°47'28"
RM 2: P.K. NAIL WITH SHINER IN CREOSOTE FENCE POST.				9.43'	156°53'25"
RM 3: P.K. NAIL WITH SHINER IN CREOSOTE FENCE POST.				64.84'	333°18'26"

DETAILED DESCRIPTION :
 ALUMINUM CAP SET IN CONCRETE, STAMPED "COLLEGE STATION MON. 101, 1994".
 THE MONUMENT IS LOCATED IN COLLEGE STATION, TEXAS, ON THE NORTHEAST SIDE OF
 RIVER ROAD. THE MONUMENT IS 305 FEET IN A NORTHERLY DIRECTION ALONG RIVER ROAD
 FROM ITS INTERSECTION WITH DOGWOOD TRAIL. THE MONUMENT IS 9 FEET NORTHEAST OF
 THE NORTHEAST EDGE OF RIVER ROAD (GRAVEL).

FIELD SKETCH



CITY OF COLLEGE STATION

HORIZONTAL CONTROL MONUMENT

MONUMENT NAME 107	DATE ESTABLISHED 1994	STATE: TEXAS	COUNTY BRAZOS
----------------------	--------------------------	-----------------	------------------

NAD-27	GEODETIC POSITION	NAD-83	GEODETIC POSITION
LATITUDE	N 030° 38' 06.11970"	LATITUDE	N 030° 38' 06.83897"
LONGITUDE	W 096° 22' 45.46463"	LONGITUDE	W 096° 22' 46.33018"

NAD-27 TEXAS STATE PLANE COORDINATES CENTRAL ZONE	NAD-83 TEXAS STATE PLANE COORDINATES CENTRAL ZONE (US Survey Feet)
Y COORDINATE 374278.328	Y COORDINATE 10216860.404
X COORDINATE 3243267.953	X COORDINATE 3539747.617
CONVERGENCE = 2° 02' 11.62"	CONVERGENCE = 2° 02' 11.18"
SCALE FACTOR = 0.9999020	SCALE FACTOR = 0.9999020

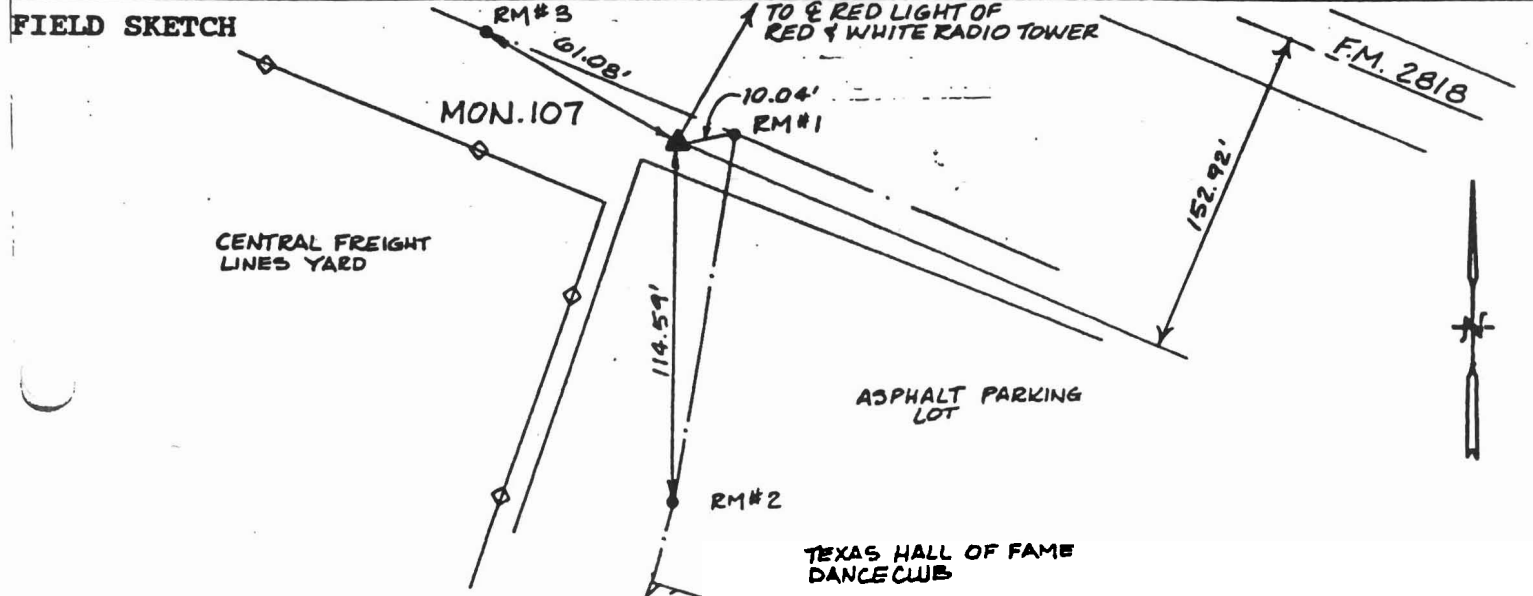
G.P.S ELEVATION : 341.50 ft. (NGVD 1929 MEAN SEA LEVEL DATUM)

AZIMUTH MARK RADIO TOWER	ASTRONOMIC AZIMUTH (FROM NORTH) N 059° 34' 01"	GRID AZIMUTH (FROM NORTH) N 057° 31' 50"
-----------------------------	---	---

REFERENCE MARK DESCRIPTION	DISTANCE (ft)	DIRECTION
CENTER OF RED LIGHT ON TOP OF RED AND WHITE RADIO TOWER.		000°00'00"
RM 1: P.K. NAIL WITH SHINER IN WEST FACE OF A POWER POLE.	10.04'	057°14'13"
RM 2: P.K. NAIL WITH SHINER IN NORTH FACE OF LIGHT POLE.	114.59'	152°33'21"
RM 3: P.K. NAIL WITH SHINER IN EAST FACE OF P.P.	61.08'	273°18'41"

DETAILED DESCRIPTION :

ALUMINUM CAP SET IN CONCRETE, STAMPED "COLLEGE STATION MON. 107, 1994".
THE MONUMENT IS LOCATED IN BRYAN, TEXAS, ON THE SOUTHWEST SIDE OF F.M. 2818. TO REACH THE MONUMENT FROM THE INTERSECTION OF VILLA MARIA (F.M. 1179) AND F.M. 2818, GO NORTHWEST ON F.M. 2818 APPROXIMATELY 0.3 MILES TO THE MONUMENT ON THE LEFT 136.42 FEET SOUTHWEST OF THE SOUTHWEST EDGE OF PAVEMENT OF THE EAST BOUND LANE OF F.M. 2818, 1' NORTHEAST OF THE EDGE OF ASPHALT OF THE PARKING LOT OF THE TEXAS HALL OF FAME DANCE CLUB AND 8' FROM EAST FENCE CORNER OF CENTRAL FREIGHT LINES YARD.



CITY OF COLLEGE STATION

HORIZONTAL CONTROL MONUMENT

MONUMENT NAME	DATE ESTABLISHED	STATE:	COUNTY
MON. 110	1994	TEXAS	BRAZOS

NAD-27	GEODETIC POSITION	NAD-83	GEODETIC POSITION
LATITUDE	N 030° 37' 07.59887"	LATITUDE	N 030° 37' 08.31974"
LONGITUDE	W 096° 21' 03.22927"	LONGITUDE	W 096° 21' 04.09270"

NAD-27 TEXAS STATE PLANE COORDINATES CENTRAL ZONE	NAD-83 TEXAS STATE PLANE COORDINATES CENTRAL ZONE (US Survey Feet)
--	---

Y COORDINATE 368688.820
X COORDINATE 3252405.156

Y COORDINATE 10211270.831
X COORDINATE 3548884.792

CONVERGENCE = 2° 03' 04.28"
SCALE FACTOR = 0.9999039

CONVERGENCE = 2° 03' 03.84"
SCALE FACTOR = 0.9999039

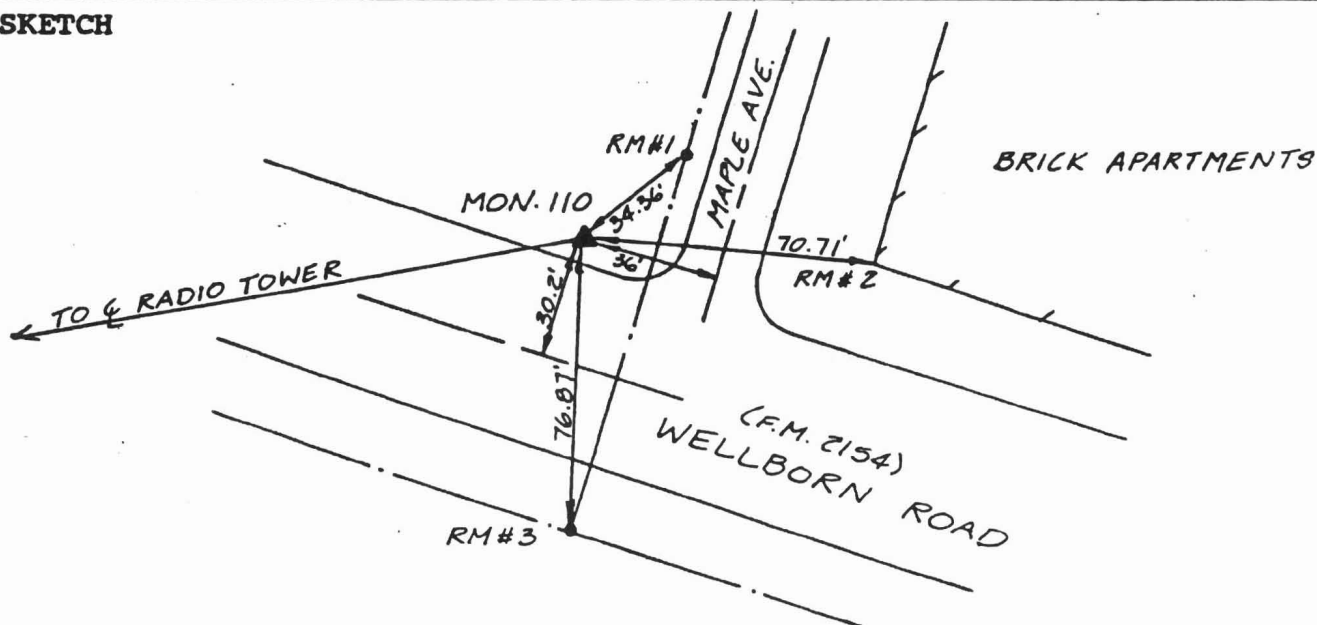
G.P.S ELEVATION : 345.83 ft. (NGVD 1929 MEAN SEA LEVEL DATUM)

AZIMUTH MARK	ASTRONOMIC AZIMUTH (FROM NORTH)	GRID AZIMUTH (FROM NORTH)
RADIO TOWER	N 287° 08' 42"	N 285° 05' 38"

REFERENCE MARK DESCRIPTION	DISTANCE (ft)	DIRECTION
CENTER OF LIGHT ON TOP OF RADIO TOWER		000°00'00"
RM 1: P.K. NAIL WITH SHINER IN WEST FACE OF POWER POLE #8720-05.	34.36'	149°53'16"
RM 2: SOUTHWEST CORNER OF BRICK APARTMENT #100-A	70.71'	195°42'33"
RM 3: P.K. NAIL WITH SHINER IN THE NORTH FACE OF POWER POLE #8725-00.	76.87'	282°15'02"

DETAILED DESCRIPTION :
ALUMINUM CAP SET IN CONCRETE, STAMPED "COLLEGE STATION MON. 110, 1994".
THE MONUMENT IS LOCATED IN COLLEGE STATION ON THE NORTH SIDE OF WELLBORN RD (F.M. 2154). TO REACH THE MONUMENT FROM THE INTERSECTION OF WELLBORN ROAD AND MAPLE AVENUE, GO NORTHWEST ON WELLBORN APPROXIMATELY 36 FEET TO THE MONUMENT ON THE RIGHT, 4.7 FEET NORTHEAST OF THE NORTHEAST TOP BACK OF CURB.

FIELD SKETCH



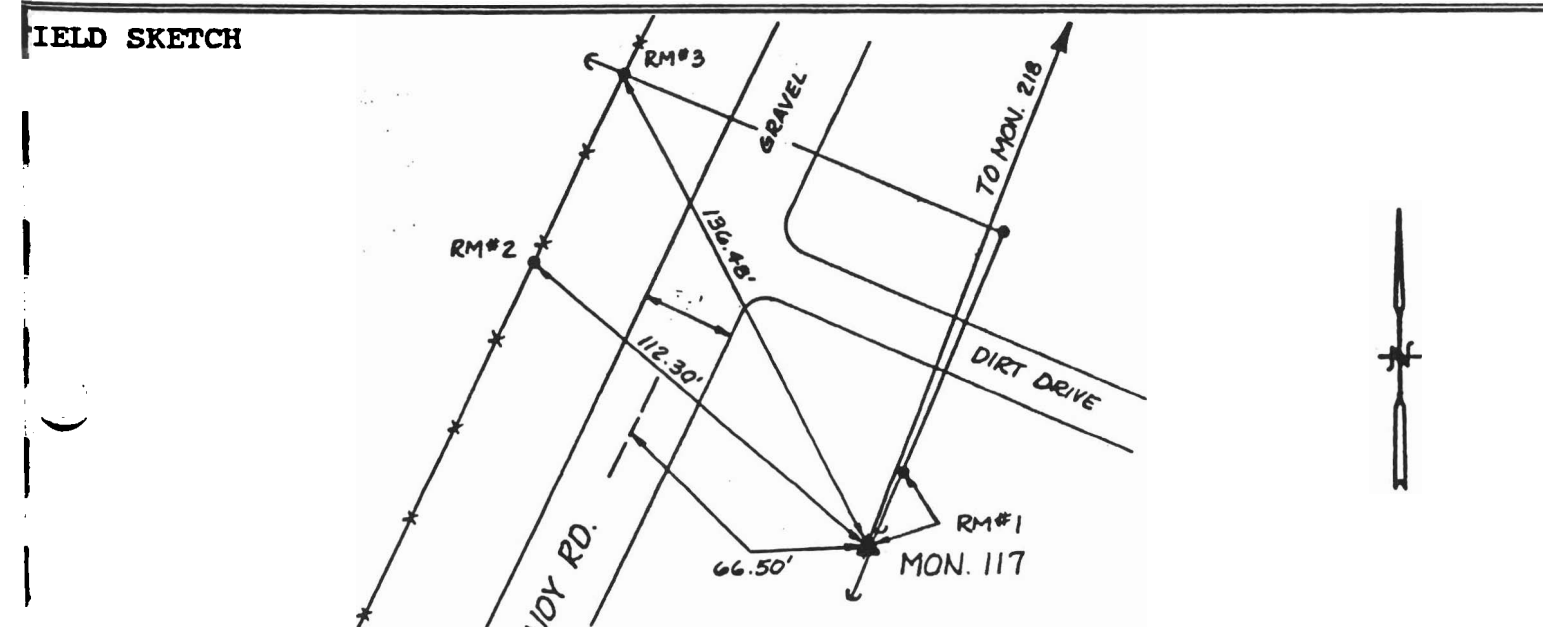
CITY OF COLLEGE STATION

HORIZONTAL CONTROL MONUMENT

MONUMENT NAME MON. 117	DATE ESTABLISHED 1994	STATE: TEXAS	COUNTY BRAZOS
NAD-27 GEODETIC POSITION LATITUDE N 030° 33' 51.00777" LONGITUDE W 096° 19' 05.11009"		NAD-83 GEODETIC POSITION LATITUDE N 030° 33' 51.73400" LONGITUDE W 096° 19' 05.97124"	
NAD-27 TEXAS STATE PLANE COORDINATES CENTRAL ZONE Y COORDINATE 349212.891 X COORDINATE 3263435.813 CONVERGENCE = 2° 04' 05.12" SCALE FACTOR = 0.9999107		NAD-83 TEXAS STATE PLANE COORDINATES CENTRAL ZONE (US Survey Feet) Y COORDINATE 10191794.723 X COORDINATE 3559915.379 CONVERGENCE = 2° 04' 04.68" SCALE FACTOR = 0.9999106	
M.P.S ELEVATION : 321.83 ft.			

AZIMUTH MARK MONUMENT 218	ASTRONOMIC AZIMUTH (FROM NORTH) N 042° 35' 18"	GRID AZIMUTH (FROM NORTH) N 040° 31' 13"
REFERENCE MARK DESCRIPTION		DISTANCE (ft) DIRECTION
MONUMENT 218 RM #1: P.K. NAIL WITH SHINER IN GUY POLE RM #2: P.K. NAIL WITH SHINER IN WOOD FENCE POST RM #3: P.K. NAIL WITH SHINER IN GUY POLE		3,412.34 000°00'00" 21.81' 005°37'58" 112.30' 228°54'03" 136.48' 311°02'15"

DETAILED DESCRIPTION :
 ALUMINUM CAP SET IN CONCRETE, STAMPED "COLLEGE STATION MON. 117, 1994".
 THE MONUMENT IS LOCATED SOUTH OF COLLEGE STATION ON GANDY ROAD. TO REACH
 MONUMENT FROM THE INTERSECTION OF OLD WELLBORN ROAD (F.M. 2154) AND GANDY ROAD,
 GO SOUTH ON GANDY ROAD 0.55 MILE TO THE MONUMENT ON THE LEFT. MONUMENT IS
 66.5 FEET EAST FROM THE CENTERLINE OF GANDY ROAD AND 56.0 FEET FROM THE
 CENTERLINE OF A DIRT ROAD.



HORIZONTAL CONTROL MONUMENT

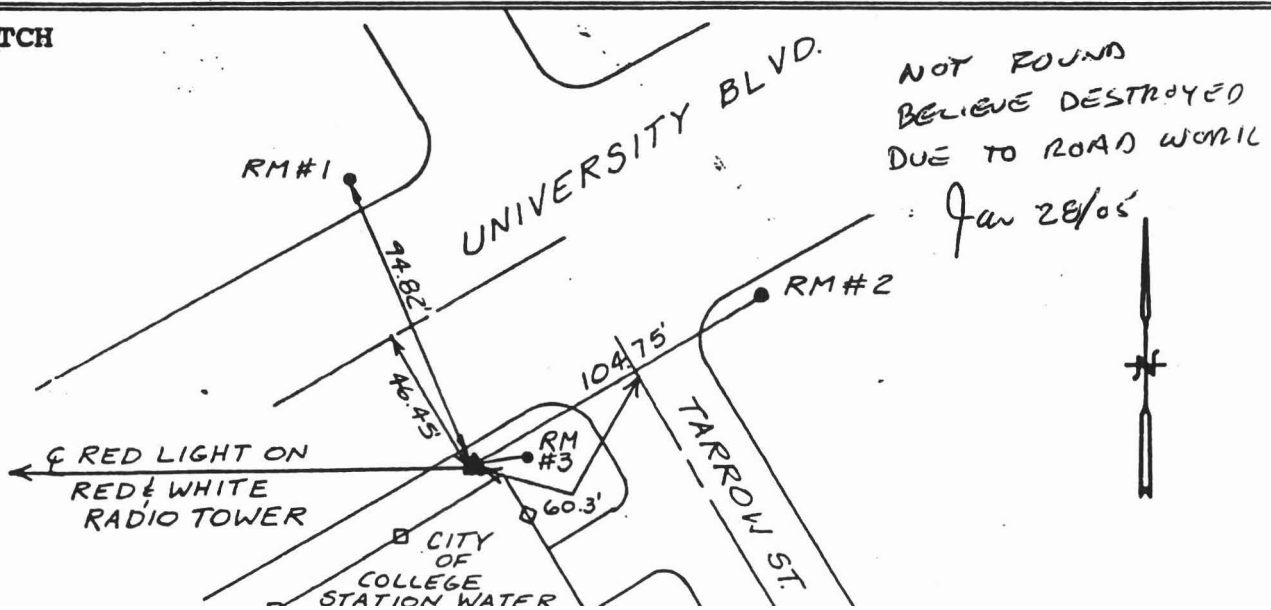
DOCUMENT NAME		DATE ESTABLISHED		STATE:		COUNTY	
MON. 122		1994		TEXAS		BRAZOS	
NAD-27 GEODETIC POSITION				NAD-83 GEODETIC POSITION			
LATITUDE		N 030° 37' 57.69610"		LATITUDE		N 030° 37' 58.41481"	
LONGITUDE		W 096° 19' 43.96001"		LONGITUDE		W 096° 19' 44.82069"	
NAD-27 TEXAS STATE PLANE COORDINATES CENTRAL ZONE				NAD-83 TEXAS STATE PLANE COORDINATES CENTRAL ZONE (US Survey Feet)			
Y COORDINATE		373994.997		Y COORDINATE		10216576.955	
X COORDINATE		3259144.689		X COORDINATE		3555624.422	
CONVERGENCE =		2° 03' 45.11"		CONVERGENCE =		2° 03' 44.67"	
SCALE FACTOR =		0.9999023		SCALE FACTOR =		0.9999023	
G.P.S ELEVATION : 329.57 ft.				(NGVD 1929 MEAN SEA LEVEL DATUM)			

AZIMUTH MARK RADIO TOWER	ASTRONOMIC AZIMUTH (FROM NORTH) N 256° 03' 28"	GRID AZIMUTH (FROM NORTH) N 253° 59' 44"	
REFERENCE MARK DESCRIPTION		DISTANCE (ft)	DIRECTION
CENTER OF RED LIGHT ON TOP OF RED AND WHITE RADIO TOWER.			000°00'00"
1: CHISELED "+" ON THE SOUTHEAST BOLT OF A SIGNAL LIGHT STRUCTURE.		94.82'	067°08'53"
RM 2: CHISELED "+" ON THE SOUTHEAST BOLT OF A SIGNAL LIGHT STRUCTURE.		104.75'	149°14'00"
RM 3: CHISELED "+" ON THE SOUTHWEST BOLT OF A SIGNAL LIGHT STRUCTURE.		16.79'	167°23'03"

DETAILED DESCRIPTION :

ALUMINUM CAP SET IN CONCRETE, STAMPED "COLLEGE STATION MON. 122, 1994".
THE MONUMENT IS LOCATED IN COLLEGE STATION ON THE EAST SIDE OF UNIVERSITY BLVD.
TO REACH THE MONUMENT FROM THE INTERSECTION OF UNIVERSITY BLVD AND TARROW
STREET GO SOUTH ON UNIVERSITY BLVD. 60.3' TO THE MONUMENT ON THE LEFT. THE
MONUMENT IS 4.2 FEET EAST OF THE EAST TOP BACK OF CURB ON UNIVERSITY BLVD.

FIELD SKETCH



CITY OF COLLEGE STATION

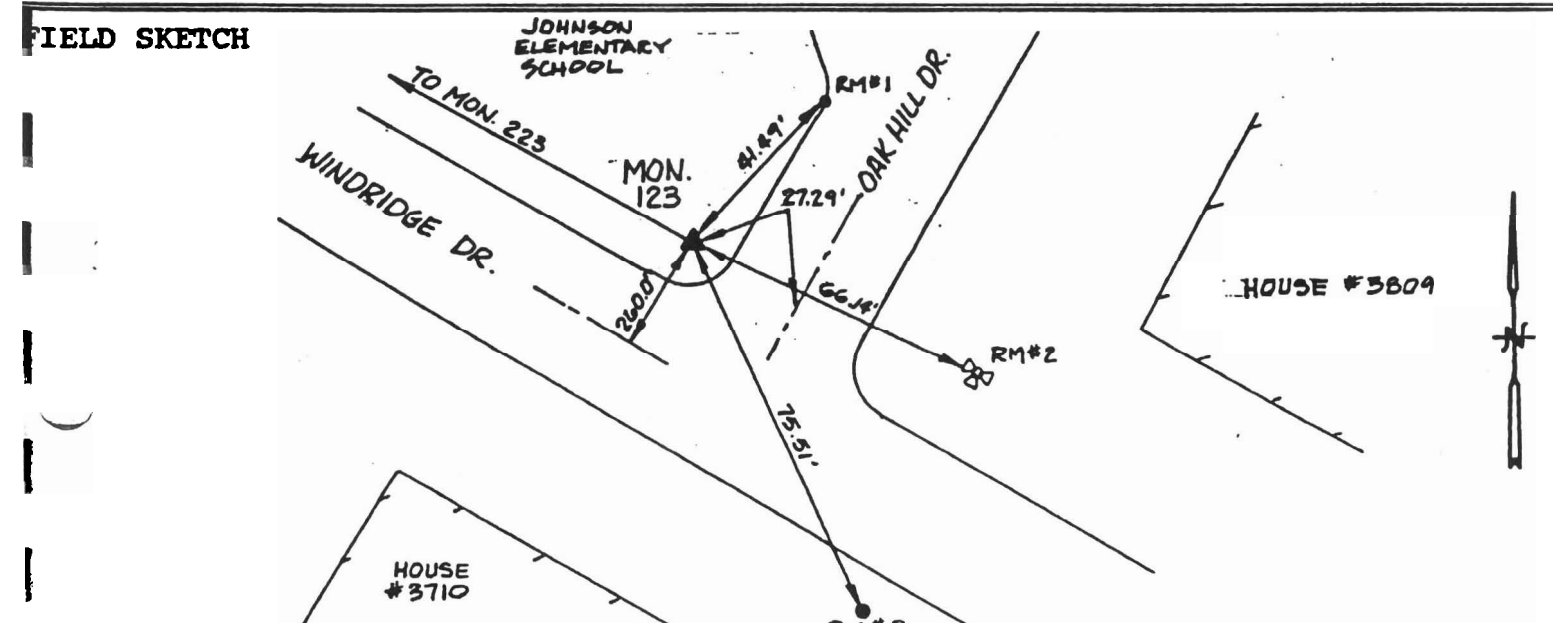
HORIZONTAL CONTROL MONUMENT

MONUMENT NAME MON. 123		DATE ESTABLISHED 1994	STATE: TEXAS	COUNTY BRAZOS
NAD-27 LATITUDE LONGITUDE	GEODETTIC POSITION N 030° 38' 50.24233" W 096° 19' 35.64201"		NAD-83 LATITUDE LONGITUDE	GEODETTIC POSITION N 030° 38' 50.95933" W 096° 19' 36.50215"
NAD-27 Y COORDINATE X COORDINATE	TEXAS STATE PLANE COORDINATES CENTRAL ZONE 379325.986 3259679.740		NAD-83 Y COORDINATE X COORDINATE	TEXAS STATE PLANE COORDINATES CENTRAL ZONE (US Survey Feet) 10221907.957 3556159.516
CONVERGENCE = SCALE FACTOR =	2° 03' 49.39" 0.9999007		CONVERGENCE = SCALE FACTOR =	2° 03' 48.95" 0.9999007

P.P.S ELEVATION : 293.53 ft. (NGVD 1929 MEAN SEA LEVEL DATUM)		
AZIMUTH MARK MONUMENT 223	ASTRONOMIC AZIMUTH (FROM NORTH) N 345° 21' 28"	GRID AZIMUTH (FROM NORTH) N 343° 17' 39"

REFERENCE MARK DESCRIPTION	DISTANCE (ft)	DIRECTION
MONUMENT 223	1078.87'	000°00'00"
RM 1: 1/2" IRON PIN SET AT THE POINT OF CURVATURE OF CURB AT ENTRANCE DRIVE TO SCHOOL	41.49'	105°29'57"
RM 2: CENTER LINE OF THE TOP OF A FIRE HYDRANT	66.14'	175°00'37"
RM 3: P.K. NAIL WITH SHINER IN THE NORTH FACE OF A LIGHT POLE	75.51'	216°49'02"

DETAILED DESCRIPTION :
 ALUMINUM CAP SET IN CONCRETE, STAMPED "COLLEGE STATION MON. 123, 1994".
 THE MONUMENT IS LOCATED IN BRYAN, TEXAS AT THE NW INTERSECTION CORNER OF OAK HILL DRIVE AND WINDRIDGE DRIVE. THE MONUMENT IS 9.5 FEET NORTHEAST OF THE NORTHEAST EDGE OF PAVEMENT OF WINDRIDGE DRIVE AND 10.7 FEET NORTHWEST OF THE NORTHWEST TOP BACK OF CURVE OF OAK HILL DRIVE, IN FRONT OF JOHNSON ELEMENTARY SCHOOL.



CITY OF COLLEGE STATION

HORIZONTAL CONTROL MONUMENT

MONUMENT NAME 128		DATE ESTABLISHED 1994	STATE: TEXAS	COUNTY BRAZOS
NAD-27 GEODETIC POSITION		NAD-83 GEODETIC POSITION		
LATITUDE N 030° 36' 43.86545"		LATITUDE N 030° 36' 44.58568"		
LONGITUDE W 096° 17' 26.05657"		LONGITUDE W 096° 17' 26.91394"		
NAD-27 TEXAS STATE PLANE COORDINATES CENTRAL ZONE		NAD-83 TEXAS STATE PLANE COORDINATES CENTRAL ZONE (US Survey Feet)		
Y COORDINATE 366977.150		Y COORDINATE 10209558.975		
X COORDINATE 3271455.351		X COORDINATE 3567935.090		
CONVERGENCE = 2° 04' 56.14"		CONVERGENCE = 2° 04' 55.70"		
SCALE FACTOR = 0.9999047		SCALE FACTOR = 0.9999046		

G.P.S ELEVATION : 265.71 ft.

(NGVD 1929 MEAN SEA LEVEL DATUM)

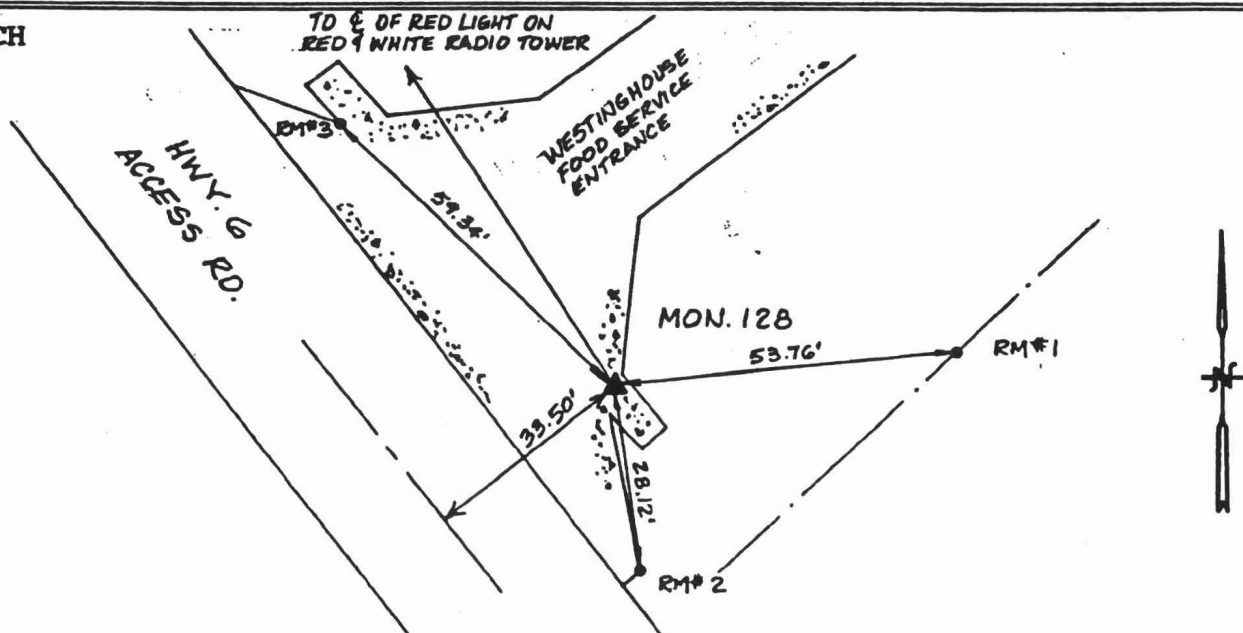
ZIMUTH MARK RADIO TOWER	ASTRONOMIC AZIMUTH (FROM NORTH) N 346° 39' 46"	GRID AZIMUTH (FROM NORTH) N 344° 34' 50"	
REFERENCE MARK DESCRIPTION		DISTANCE (ft)	DIRECTION
CENTER OF RED LIGHT ON RED AND WHITE RADIO TOWER			000°00'00"
RM 1: P.K. NAIL WITH SHINER IN WEST FACE OF P.P. S-20		53.76'	116°44'27"
RM 2: 1/2" IRON PIN AT END OF CONCRETE ENTRANCE RAMP		28.12'	206°43'05"
1/2" IRON PIN AT CORNER OF CONCRETE CULVERT		59.34'	346°16'41"

DETAILED DESCRIPTION :

ALUMINUM CAP SET IN CONCRETE, STAMPED "COLLEGE STATION MON. 128, 1994".

THE MONUMENT IS LOCATED IN COLLEGE STATION, TEXAS, ON THE EAST SIDE OF HIGHWAY 6 0.85 MILES NORTHERLY FROM ITS INTERSECTION WITH F.M. 2818. THE MONUMENT IS 18 FEET NORTH OF THE NORTH EDGE OF ASPHALT OF HIGHWAY 6 ACCESS ROAD AND THE DRIVEWAY INTO WESTINGHOUSE FOOD SERVICES SHIPPING AND RECEIVING.

FIELD SKETCH



CITY OF COLLEGE STATION

HORIZONTAL CONTROL MONUMENT

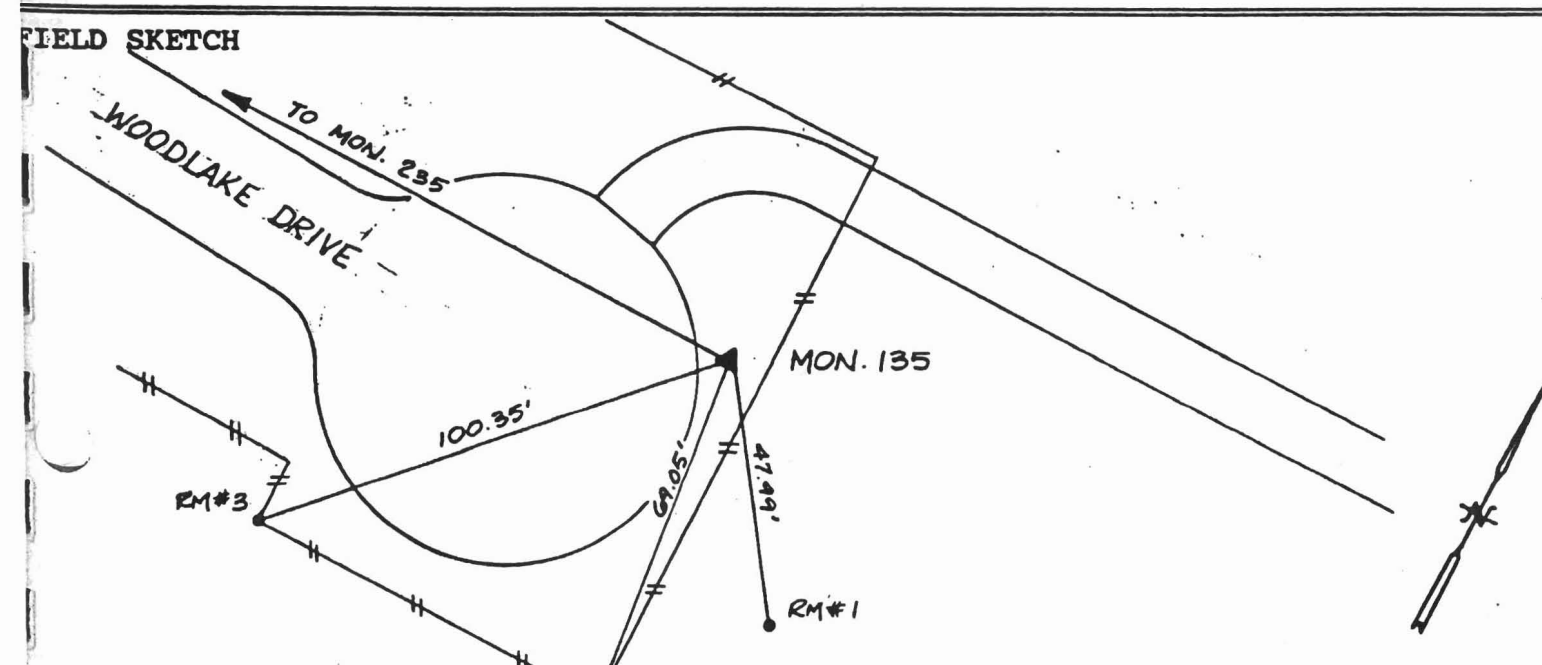
MONUMENT NAME		DATE ESTABLISHED		STATE:		COUNTY	
MON. 135		1994		TEXAS		BRAZOS	
NAD-27				NAD-83			
GEODETTIC POSITION		GEODETTIC POSITION		GEODETTIC POSITION		GEODETTIC POSITION	
LATITUDE		N 030° 31' 20.36777"		LATITUDE		N 030° 31' 21.09775"	
LONGITUDE		W 096° 16' 03.34377"		LONGITUDE		W 096° 16' 04.20091"	
NAD-27 TEXAS STATE PLANE COORDINATES				NAD-83 TEXAS STATE PLANE COORDINATES			
CENTRAL ZONE				CENTRAL ZONE (US Survey Feet)			
COORDINATE		334582.359		Y COORDINATE		10177164.001	
X COORDINATE		3279872.212		X COORDINATE		3576351.744	
CONVERGENCE =		2° 05' 38.74"		CONVERGENCE =		2° 05' 38.30"	
SCALE FACTOR =		0.9999165		SCALE FACTOR =		0.9999164	

M.P.S ELEVATION : 278.19 ft. (NGVD 1929 MEAN SEA LEVEL DATUM)

AZIMUTH MARK MONUMENT 235		ASTRONOMIC AZIMUTH (FROM NORTH) N 310° 05' 09"		GRID AZIMUTH (FROM NORTH) N 307° 59' 31"	
------------------------------	--	---	--	---	--

REFERENCE MARK DESCRIPTION	DISTANCE (ft)	DIRECTION
MONUMENT 235	812.78'	000°00'00"
RM 1: P.K. NAIL WITH SHINER IN LIGHT POLE	47.99'	235°15'45"
RM 2: P.K. NAIL WITH SHINER IN CENTER TOP OF FENCE CORNER POST	69.05'	263°43'05"
RM 3: P.K. NAIL WITH SHINER IN CENTER TOP OF FENCE CORNER POST	100.35'	313°31'45"

DETAILED DESCRIPTION :
 ALUMINUM CAP SET IN CONCRETE, STAMPED "COLLEGE STATION MON. 135, 1994".
 THE MONUMENT IS LOCATED SOUTH OF COLLEGE STATION, AT THE END OF WOODLAKE DRIVE.
 MONUMENT IS 1.2 MILES EAST OF THE INTERSECTION OF GREENS PRAIRIE ROAD AND
 WOODLAKE DRIVE. THE MONUMENT IS 1.6 FEET EAST OF A WOOD FENCE AND 20.2 FEET
 SOUTH FROM THE CENTERLINE OF WOODLAKE DRIVE.



CITY OF COLLEGE STATION

HORIZONTAL CONTROL MONUMENT

MONUMENT MON. 144	DATE ESTABLISHED 1994	STATE: TEXAS	COUNTY BRAZOS
NAD-27 LATITUDE LONGITUDE	GEODETIC POSITION N 030° 38' 36.32351" W 096° 14' 32.43990"	NAD-83 LATITUDE LONGITUDE	GEODETIC POSITION N 030° 38' 37.03921" W 096° 14' 33.29153"
NAD-27 TEXAS STATE PLANE COORDINATES CENTRAL ZONE Y COORDINATE X COORDINATE	378884.590 3286198.275	NAD-83 TEXAS STATE PLANE COORDINATES CENTRAL ZONE (US Survey Feet) Y COORDINATE X COORDINATE	10221466.328 3582678.201
CONVERGENCE = SCALE FACTOR =	2° 06' 25.56" 0.9999011	CONVERGENCE = SCALE FACTOR =	2° 06' 25.12" 0.9999011

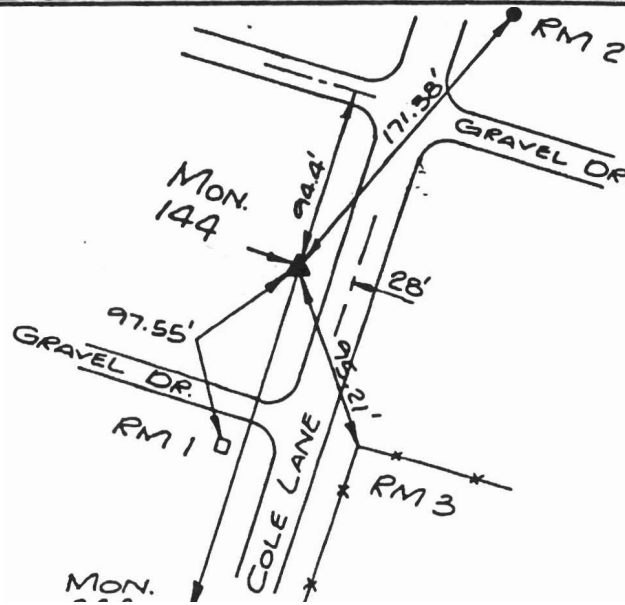
G.P.S ELEVATION : 269.74 ft. (NGVD 1929 MEAN SEA LEVEL DATUM)

AZIMUTH MARK MONUMENT 244	ASTRONOMIC AZIMUTH (FROM NORTH) N 222° 52' 23"	GRID AZIMUTH (FROM NORTH) N 220° 45' 58"
REFERENCE MARK DESCRIPTION	DISTANCE (ft)	DIRECTION
MONUMENT 244	2586.95'	000°00'00"
RM 1: NORTHEAST CORNER OF A BRICK COLUMN 3.6' FROM A GRAVEL DRIVEWAY	97.55'	002°24'13"
RM 2: P.K. NAIL WITH SHINER IN THE WEST FACE OF P.P.	171.38'	203°02'02"
RM 3: P.K. NAIL WITH SHINER IN FENCE CORNER POST.	95.21'	322°09'38"

DETAILED DESCRIPTION :

ALUMINUM CAP SET IN CONCRETE, STAMPED "COLLEGE STATION MON. 144, 1994".
THE MONUMENT IS LOCATED NORTH OF COLLEGE STATION ON THE NORTHWEST SIDE OF COLE LANE. TO REACH THE MONUMENT FROM THE INTERSECTION OF HIGHWAY 30 AND COLE LANE GO NORTHEAST ON COLE LANE FROM HIGHWAY 30, 2587 FEET TO THE MONUMENT ON THE LEFT. THE MONUMENT IS 88.4 FEET SOUTHEAST OF THE SOUTHEAST EDGE OF A 12' WIDE GRAVEL DRIVEWAY, 16.5 FEET NORTHWEST OF THE NORTHWEST EDGE OF ASPHALT OF COLE LANE AND 3.6 FEET SOUTHWEST OF A 2" GALVANIZED PIPE.

FIELD SKETCH



CITY OF COLLEGE STATION

HORIZONTAL CONTROL MONUMENT

DOCUMENT NAME P. 147		DATE ESTABLISHED 1994		STATE: TEXAS		COUNTY BRAZOS	
NAD-27 GEODETIC POSITION				NAD-83 GEODETIC POSITION			
LATITUDE		N 030° 36' 08.68042"		LATITUDE		N 030° 36' 09.40091"	
LONGITUDE		W 096° 14' 59.04965"		LONGITUDE		W 096° 14' 59.90314"	
NAD-27 TEXAS STATE PLANE COORDINATES CENTRAL ZONE				NAD-83 TEXAS STATE PLANE COORDINATES CENTRAL ZONE (US Survey Feet)			
Y COORDINATE		363894.215		Y COORDINATE		10206475.917	
X COORDINATE		3284422.817		X COORDINATE		3580902.602	
CONVERGENCE =		2° 06' 11.86"		CONVERGENCE =		2° 06' 11.42"	
SCALE FACTOR =		0.9999058		SCALE FACTOR =		0.9999058	

G.P.S ELEVATION : 224.16 ft. (NGVD 1929 MEAN SEA LEVEL DATUM)

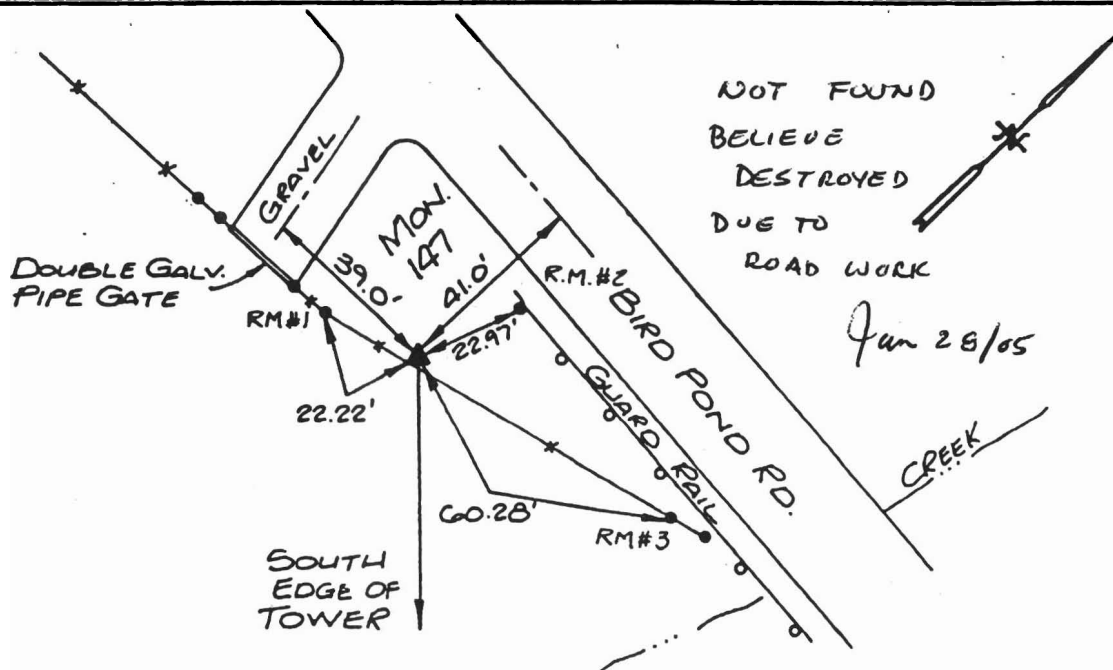
AZIMUTH MARK RADIO TOWER	ASTRONOMIC AZIMUTH (FROM NORTH) N 080° 29' 35"	GRID AZIMUTH (FROM NORTH) N 078° 23' 23"	
REFERENCE MARK DESCRIPTION		DISTANCE (ft)	DIRECTION
SOUTH EDGE OF A RADIO TOWER			000°00'00"
RM 1: P.K. NAIL WITH SHINER IN CREOSOTE BRACE POST		22.22'	120°22'24"
RM 2: P.K. NAIL WITH SHINER IN CREOSOTE GUARD RAIL POST		22.97'	246°02'35"
RM 3: P.K. NAIL WITH SHINER IN CREOSOTE BRACE POST		60.28'	303°23'37"

DETAILED DESCRIPTION :

ALUMINUM CAP SET IN CONCRETE, STAMPED "COLLEGE STATION MON. 147, 1994".

THE MONUMENT IS LOCATED NORTH OF COLLEGE STATION ONE MILE SOUTH OF MONUMENT 146 ON THE SOUTH SIDE OF BIRD POND ROAD 29 FEET SOUTH OF THE SOUTH EDGE OF ASPHALT OF BIRD POND ROAD AND 30 FEET WEST OF THE WEST EDGE OF A GRAVEL DRIVEWAY AND 1' NORTH OF A FENCE.

FIELD SKETCH



CITY OF COLLEGE STATION

HORIZONTAL CONTROL MONUMENT

MONUMENT NAME MON 153		DATE ESTABLISHED 1994	STATE: TEXAS	COUNTY BRAZOS
NAD-27 GEODETIC POSITION		NAD-83 GEODETIC POSITION		
LATITUDE N 030° 31' 12.02897"		LATITUDE N 030° 31' 12.75823"		
LONGITUDE W 096° 12' 54.60600"		LONGITUDE W 096° 12' 55.45819"		
NAD-27 TEXAS STATE PLANE COORDINATES CENTRAL ZONE		NAD-83 TEXAS STATE PLANE COORDINATES CENTRAL ZONE (US Survey Feet)		
Y COORDINATE 334347.627		Y COORDINATE 10176929.133		
X COORDINATE 3296399.683		X COORDINATE 3592879.279		
CONVERGENCE = 2° 07' 15.95"		CONVERGENCE = 2° 07' 15.51"		
SCALE FACTOR = 0.9999168		SCALE FACTOR = 0.9999168		

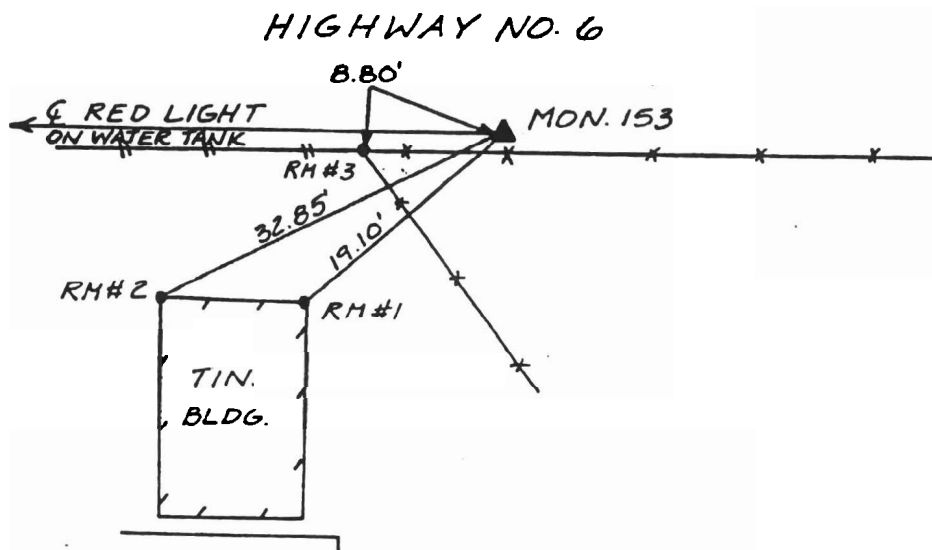
G.P.S ELEVATION : 243.10 ft. (NGVD 1929 MEAN SEA LEVEL DATUM)

AZIMUTH MARK WATER TANK	ASTRONOMIC AZIMUTH (FROM NORTH) N 315° 25' 19"	GRID AZIMUTH (FROM NORTH) N 313° 18' 03"	
REFERENCE MARK DESCRIPTION		DISTANCE (ft)	DIRECTION
CENTER RED LIGHT TOP OF COLLEGE STATION WATER TANK AT HIGHWAY 6 AND GREENS PRAIRIE ROAD RM 1: CORNER TIN BUILDING RM 2: CORNER TIN BUILDING RM 3: P.K. NAIL WITH SHINER IN FENCE AT END OF WOOD FENCE			000°00'00"
		19.10'	292°57'52"
		32.85'	312°43'52"
		8.80'	349°14'38"

DETAILED DESCRIPTION :

ALUMINUM CAP SET IN CONCRETE, STAMPED "COLLEGE STATION MON. 153, 1994".
THE MONUMENT IS LOCATED SOUTH OF COLLEGE STATION, ON THE WEST SIDE OF HIGHWAY 6.
MONUMENT IS 2 MILES SOUTHERLY FROM THE INTERSECTIN OF HIGHWAY 6 AND NANTUCKET
DRIVE. MONUMENT IS 1.45 FEET EASTERLY OF FENCE. (NOTE: HIGHWAY 6 IS UNDER
CONSTRUCTION)

FIELD SKETCH



CITY OF COLLEGE STATION

HORIZONTAL CONTROL MONUMENT

NAME	DATE ESTABLISHED	STATE:	COUNTY
158	1994	TEXAS	BRAZOS
NAD-27 GEODETIC POSITION LATITUDE N 030° 35' 59.10270" LONGITUDE W 096° 13' 14.13761"		NAD-83 GEODETIC POSITION LATITUDE N 030° 35' 59.82287" LONGITUDE W 096° 13' 14.98851"	
NAD-27 TEXAS STATE PLANE COORDINATES CENTRAL ZONE Y COORDINATE 363265.012 X COORDINATE 3293620.589		NAD-83 TEXAS STATE PLANE COORDINATES CENTRAL ZONE (US Survey Feet) Y COORDINATE 10205846.628 X COORDINATE 3590100.394	
CONVERGENCE = 2° 07' 05.89" SCALE FACTOR = 0.9999061		CONVERGENCE = 2° 07' 05.45" SCALE FACTOR = 0.9999061	

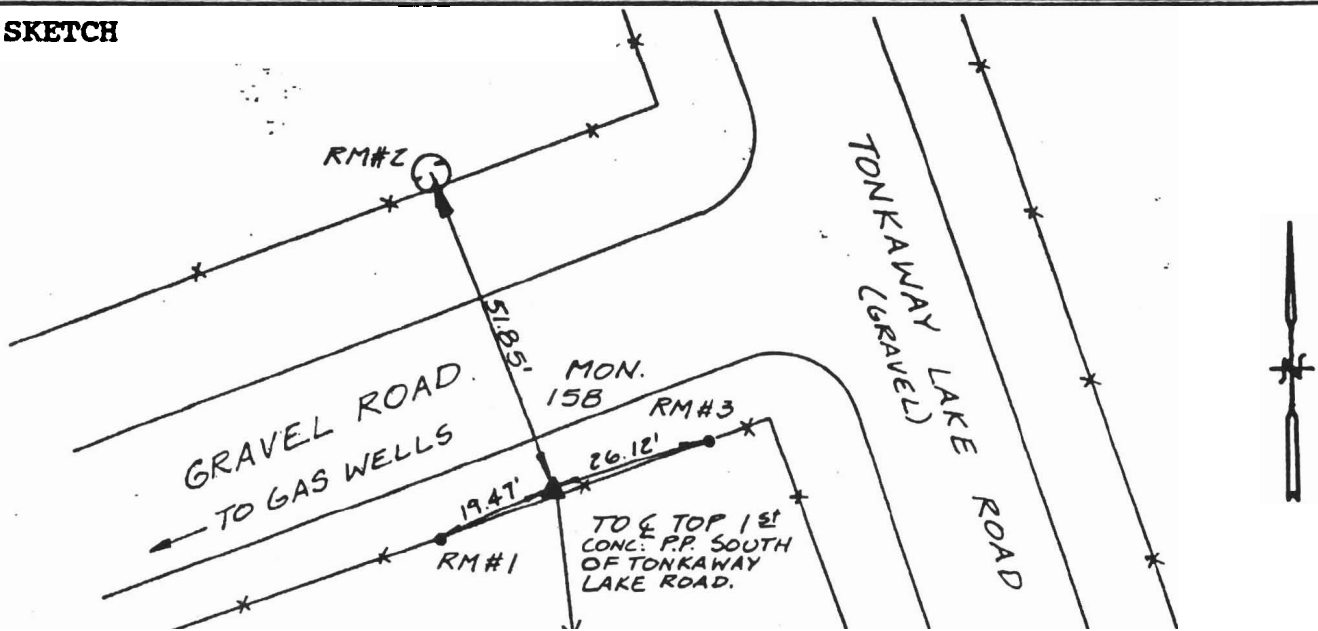
G.P.S ELEVATION : 252.14 ft. (NGVD 1929 MEAN SEA LEVEL DATUM)

AZIMUTH MARK	ASTRONOMIC AZIMUTH (FROM NORTH)	GRID AZIMUTH (FROM NORTH)
CONC. POWER POLE	N 148° 33' 28"	N 146° 26' 23"
REFERENCE MARK DESCRIPTION	DISTANCE (ft)	DIRECTION
CENTER TOP OF 1ST CONCRETE POWER LINE POLE SOUTH OF TONKAWAY LAKE ROAD		000°00'00"
RM 1: P.K. NAIL WITH SHINER IN CREOSOTE FENCE POST	19.47'	071°48'06"
RM 2: P.K. NAIL WITH SHINER IN 24" ELM TREE	51.85'	161°28'54"
RM 3: P.K. NAIL WITH SHINER IN CREOSOTE BRACE POST	26.12'	255°59'09"

DETAILED DESCRIPTION :

ALUMINUM CAP SET IN CONCRETE, STAMPED "COLLEGE STATION MON. 158, 1994".
 THE MONUMENT IS LOCATED EAST FROM COLLEGE STATION ON TONKAWAY LAKE ROAD (GRAVEL)
 TO REACH THE MONUMENT FROM THE INTERSECTION BIRD POND ROAD AND TONKAWAY LAKE
 ROAD GO SOUTH ON TONKAWAY LAKE ROAD 2.55 MILES TO THE MONUMENT ON THE RIGHT.
 MONUMENT IS 21.0 FEET SOUTH FROM THE CENTERLINE OF A GRAVEL ROAD LEADING TO
 GAS WELLS AND 60.0 FEET WEST FROM THE CENTERLINE OF TONKAWAY LAKE ROAD.

FIELD SKETCH



CITY OF COLLEGE STATION

HORIZONTAL CONTROL MONUMENT

MONUMENT NAME 159	DATE ESTABLISHED 1994	STATE: TEXAS	COUNTY BRAZOS
----------------------	--------------------------	-----------------	------------------

NAD-27	GEODETIC POSITION	NAD-83	GEODETIC POSITION
LATITUDE	N 030° 35' 33.68055"	LATITUDE	N 030° 35' 34.40138"
LONGITUDE	W 096° 12' 43.66856"	LONGITUDE	W 096° 12' 44.51885"

NAD-27	TEXAS STATE PLANE COORDINATES CENTRAL ZONE	NAD-83	TEXAS STATE PLANE COORDINATES CENTRAL ZONE (US Survey Feet)
Y COORDINATE	360797.133	Y COORDINATE	10203378.719
X COORDINATE	3296376.642	X COORDINATE	3592856.436

CONVERGENCE =	2° 07' 21.58"	CONVERGENCE =	2° 07' 21.15"
SCALE FACTOR =	0.9999070	SCALE FACTOR =	0.9999070

G.P.S ELEVATION : 246.95 ft. (NGVD 1929 MEAN SEA LEVEL DATUM)

AZIMUTH MARK CONCRETE POWER POLE	ASTRONOMIC AZIMUTH (FROM NORTH) N 336° 53' 03"	GRID AZIMUTH (FROM NORTH) N 334° 45' 42"
-------------------------------------	---	---

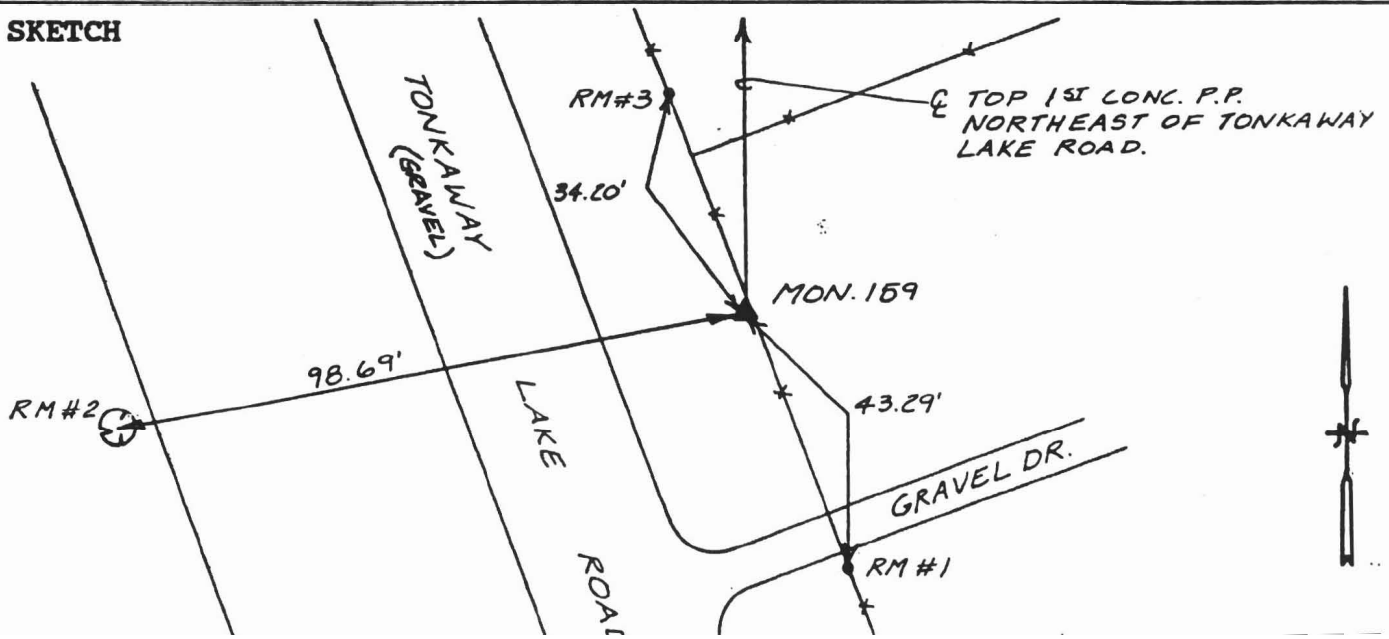
REFERENCE MARK DESCRIPTION	DISTANCE (ft)	DIRECTION
CENTER TOP OF FIRST CONCRETE POWER POLE NORTHEAST OF TONKAWAY LAKE ROAD		000°00'00"
RM 1: P.K. NAIL WITH SHINER IN RAILROAD TIE GATE POST	43.29'	157°28'29"
RM 2: P.K. NAIL WITH SHINER IN 20" POST OAK TREE	98.69'	260°05'47"
RM 3: P.K. NAIL WITH SHINER IN CREOSOTE BRACE POST	34.20'	342°15'43"

DETAILED DESCRIPTION :

ALUMINUM CAP SET IN CONCRETE, STAMPED "COLLEGE STATION MON. 159, 1994".

THE MONUMENT IS LOCATED EAST OF COLLEGE STATION, ON THE NORTH SIDE OF TONKAWAY LAKE ROAD. TO REACH MONUMENT FROM THE INTERSECTION OF BIRD POND ROAD AND TONKAWAY LAKE ROAD, GO SOUTH ON TONKAWAY LAKE ROAD 3.2 MILES TO MONUMENT ON THE LEFT. MONUMENT IS 37.5 FEET NORTH OF THE CENTER OF A GRAVEL ROAD AND 33.0 FEET NORTHEAST OF THE CENTER OF TONKAWAY LAKE ROAD.

FIELD SKETCH



CITY OF COLLEGE STATION

HORIZONTAL CONTROL MONUMENT

MONUMENT NAME MON. 164		DATE ESTABLISHED 1994	STATE: TEXAS	COUNTY BRAZOS
NAD-27 LATITUDE LONGITUDE	GEODETTIC POSITION N 030° 36' 30.72162" W 096° 22' 32.12417"		NAD-83 LATITUDE LONGITUDE	GEODETTIC POSITION N 030° 36' 31.44383" W 096° 22' 32.98998"
NAD-27 TEXAS STATE PLANE COORDINATES CENTRAL ZONE	Y COORDINATE 364688.662 X COORDINATE 3244775.439		NAD-83 TEXAS STATE PLANE COORDINATES CENTRAL ZONE (US Survey Feet)	Y COORDINATE 10207270.693 X COORDINATE 3541255.036
CONVERGENCE = SCALE FACTOR =	2° 02' 18.50" 0.9999051		CONVERGENCE = SCALE FACTOR =	2° 02' 18.05" 0.9999051

G.P.S ELEVATION : 344.61 ft.

(NGVD 1929 MEAN SEA LEVEL DATUM)

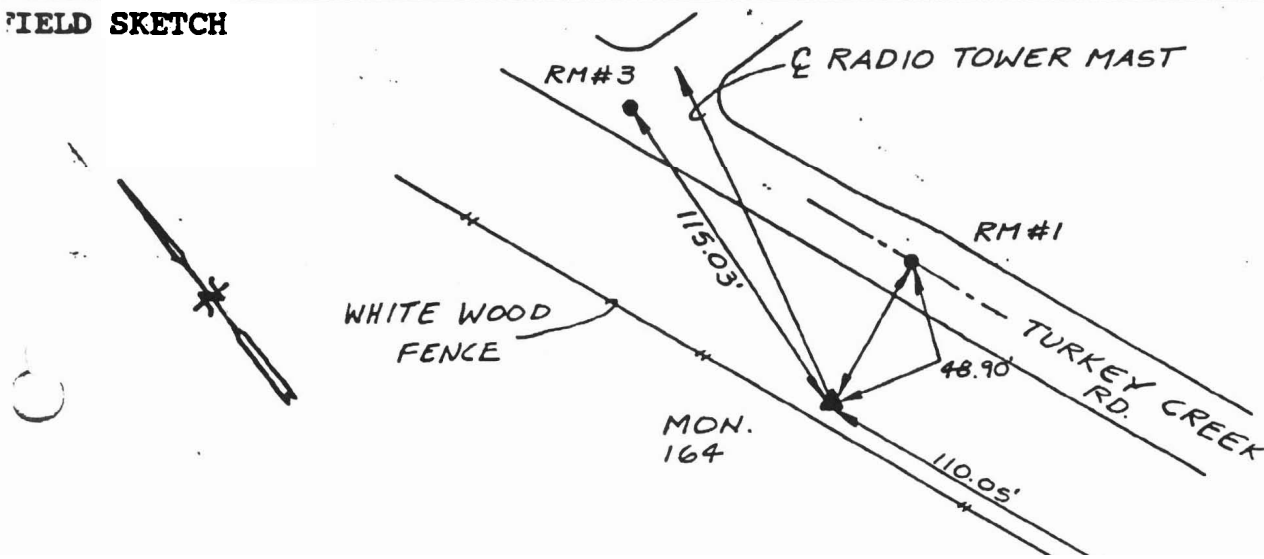
AZIMUTH MARK RADIO TOWER	ASTRONOMIC AZIMUTH (FROM NORTH) N 039° 30' 19"	GRID AZIMUTH (FROM NORTH) N 037° 28' 01"
-----------------------------	---	---

REFERENCE MARK DESCRIPTION	DISTANCE (ft)	DIRECTION
CENTER LINE OF RADIO TOWER MAST		000°00'00"
RM 1: P.K. WITH SHINER IN CENTERLINE OF TURKEY CREEK ROAD.	49.38'	054°28'46"
RM 2: CENTER OF THE TOP OF A GTE BURIED FIBER OPTIC CABLE MARKER.	110.05'	145°38'01"
RM 3: 60D NAIL WITH SHINER IN A WHITE PANEL IN THE CENTER LINE OF TURKEY CREEK ROAD	115.03'	350°29'19"

DETAILED DESCRIPTION :

ALUMINUM CAP SET IN CONCRETE, STAMPED "COLLEGE STATION MON. 164, 1994". THE MONUMENT IS LOCATED SOUTH OF COLLEGE STATION, TEXAS, ON THE SOUTHWEST SIDE OF TURKEY CREEK ROAD. TO REACH THE MONUMENT FROM THE INTERSECTION OF F.M. 60 AND TURKEY CREEK ROAD GO NORTHWEST ON TURKEY CREEK ROAD 0.85 MILES TO THE MONUMENT ON THE LEFT. THE MONUMENT IS 1.50 FEET NORTHEAST OF A PASTURE FENCE AND 37.9 FEET SOUTHWEST OF THE SOUTHWEST EDGE OF ASPHALT OF TURKEY CREEK ROAD.

FIELD SKETCH



CITY OF COLLEGE STATION

HORIZONTAL CONTROL MONUMENT

MONUMENT NAME MON. 203		DATE ESTABLISHED 1994	STATE: TEXAS	COUNTY BRAZOS
NAD-27 GEODETIC POSITION LATITUDE N 030° 35' 11.61416" LONGITUDE W 096° 23' 04.68461"		NAD-83 GEODETIC POSITION LATITUDE N 030° 35' 12.33896" LONGITUDE W 096° 23' 05.55173"		
NAD-27 TEXAS STATE PLANE COORDINATES CENTRAL ZONE Y COORDINATE 356601.106 X COORDINATE 3242215.583		NAD-83 TEXAS STATE PLANE COORDINATES CENTRAL ZONE (US Survey Feet) Y COORDINATE 10199183.123 X COORDINATE 3538695.112		
CONVERGENCE = 2° 02' 01.72" SCALE FACTOR = 0.9999078		CONVERGENCE = 2° 02' 01.28" SCALE FACTOR = 0.9999078		

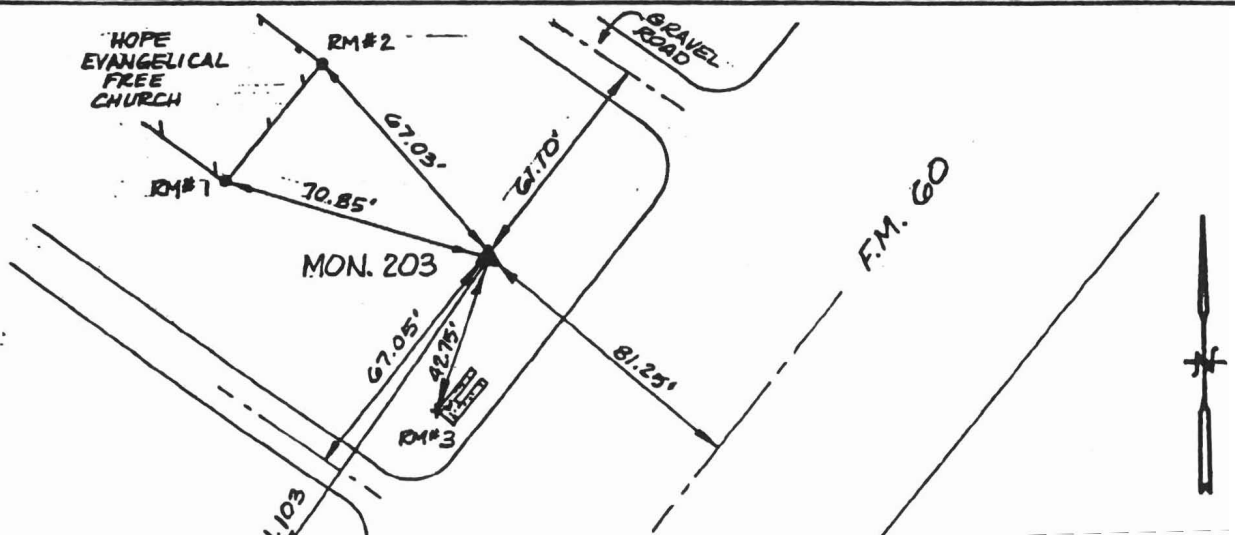
G.P.S ELEVATION : 311.03 ft. (NGVD 1929 MEAN SEA LEVEL DATUM)

AZIMUTH MARK MONUMENT 103	ASTRONOMIC AZIMUTH (FROM NORTH) N 222° 00' 02"	GRID AZIMUTH (FROM NORTH) N 219° 58' 01"
REFERENCE MARK DESCRIPTION		DISTANCE (ft) DIRECTION
MONUMENT 103 RM 1: SOUTHEAST CORNER OF HOPE EVANGELICAL FREE CHURCH RM 2: NORTHEAST CORNER OF HOPE EVANGELICAL CHURCH RM 3: 1/2" IRON PIN AT THE SOUTHWEST CORNER OF A CONCRETE CULVERT.		3988.85 000°00'00" 70.85' 071°17'13" 67.03' 104°37'36" 42.75' 343°19'49"

DETAILED DESCRIPTION :

ALUMINUM CAP SET IN CONCRETE, STAMPED "COLLEGE STATION MON. 203, 1994". THE MONUMENT IS LOCATED IN COLLEGE STATION, TEXAS, IN FRONT OF THE HOPE EVANGELICAL FREE CHURCH ON THE NORTHWEST SIDE OF F.M. 60. THE MONUMENT IS 1.10 MILES SOUTH FROM THE INTERSECTION OF TURKEY CREEK ROAD AND F.M. 60. THE MONUMENT IS 30.25 FEET NORTHWEST OF THE NORTHWEST EDGE OF ASPHALT OF F.M. 60, 53.6 FEET SOUTHWEST OF THE SOUTHWEST LINE OF THE NORTHEAST GRAVEL DRIVEWAY AND 60.55 FEET NORTHEAST OF THE NORTHEAST EDGE OF THE SOUTHWEST GRAVEL DRIVEWAY TO THE CHURCH.

FIELD SKETCH



CITY OF COLLEGE STATION

HORIZONTAL CONTROL MONUMENT

MONUMENT NAME	DATE ESTABLISHED	STATE:	COUNTY
MON. 220	1994	TEXAS	BRAZOS

NAD-27 GEODETIC POSITION
 LATITUDE N 030° 36' 05.28851"
 LONGITUDE W 096° 19' 21.76578"

NAD-83 GEODETIC POSITION
 LATITUDE N 030° 36' 06.01061"
 LONGITUDE W 096° 19' 22.62658"

NAD-27 TEXAS STATE PLANE COORDINATES
 CENTRAL ZONE

Y COORDINATE 362716.700
 X COORDINATE 3261491.683

NAD-83 TEXAS STATE PLANE COORDINATES
 CENTRAL ZONE (US Survey Feet)

Y COORDINATE 10205298.597
 X COORDINATE 3557971.339

CONVERGENCE = 2° 03' 56.54"
 SCALE FACTOR = 0.9999059

CONVERGENCE = 2° 03' 56.10"
 SCALE FACTOR = 0.9999059

G.P.S ELEVATION : 312.27 ft. (NGVD 1929 MEAN SEA LEVEL DATUM)

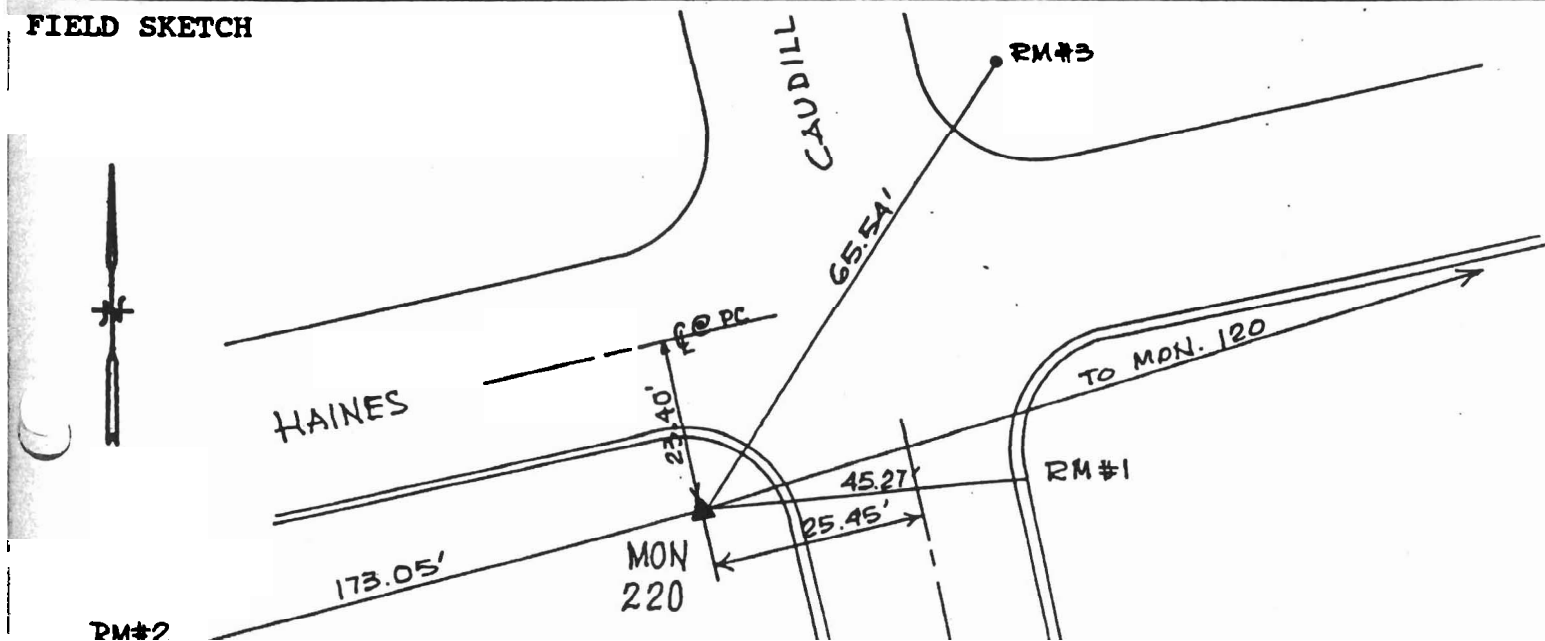
AZIMUTH MARK MONUMENT 120	ASTRONOMIC AZIMUTH (FROM NORTH) N 063° 38' 28"	GRID AZIMUTH (FROM NORTH) N 061° 34' 32"
------------------------------	---	---

REFERENCE MARK DESCRIPTION	DISTANCE (ft)	DIRECTION
MONUMENT 120	1,086.75'	000°00'00"
1: CHISELED "+" ON TOP OF CURB AT POINT OF POINT OF CURVATURE	45.27'	027°01'23"
RM 2: P.K. NAIL WITH SHINER IN POWER POLE WITH LIGHT AND TRANSFORMER	173.05'	183°23'00"
RM 3: P.K. NAIL WITH SHINER IN POWER POLE WITH LIGHT	65.54'	326°04'03"

DETAILED DESCRIPTION :

ALUMINUM CAP SET IN CONCRETE, STAMPED "COLLEGE STATION MON. 220, 1994".
 THE MONUMENT IS LOCATED IN COLLEGE STATION ON HAINES DRIVE. MONUMENT IS IN THE
 SOUTHWEST QUADRANT OF THE INTERSECTION OF HAINES DRIVE AND CAUDILL. MONUMENT IS
 3.8 FEET FROM THE BACK OF CURB ON HAINES DRIVE AND 10.95 FEET FROM THE POINT OF
 CURVATURE OF THE BACK OF CURB ON CAUDILL.

FIELD SKETCH



CITY OF COLLEGE STATION

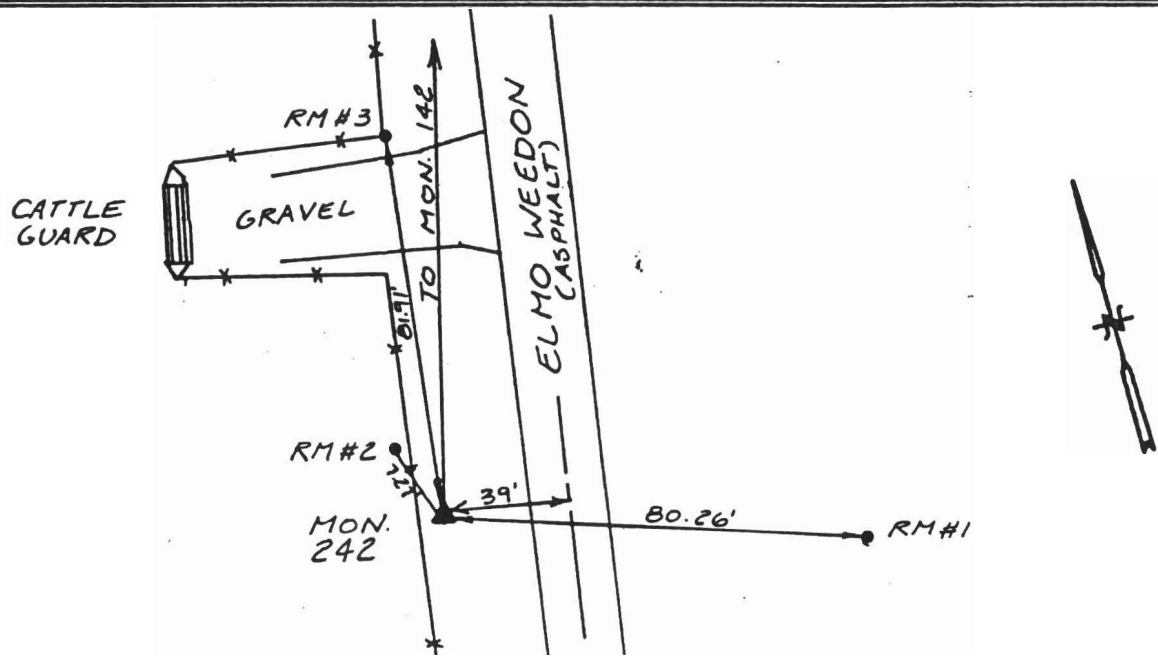
HORIZONTAL CONTROL MONUMENT

DOCUMENT NAME MON. 242		DATE ESTABLISHED 1994		STATE: TEXAS		COUNTY BRAZOS	
NAD-27 GEODETIC POSITION LATITUDE N 030° 39' 22.52590" LONGITUDE W 096° 16' 28.17324"				NAD-83 GEODETIC POSITION LATITUDE N 030° 39' 23.24080" LONGITUDE W 096° 16' 29.02787"			
NAD-27 TEXAS STATE PLANE COORDINATES CENTRAL ZONE Y COORDINATE 383178.651 X COORDINATE 3275925.208 CONVERGENCE = 2° 05' 25.95" SCALE FACTOR = 0.9998998				NAD-83 TEXAS STATE PLANE COORDINATES CENTRAL ZONE (US Survey Feet) Y COORDINATE 10225760.493 X COORDINATE 3572405.106 CONVERGENCE = 2° 05' 25.51" SCALE FACTOR = 0.9998998			
G.P.S ELEVATION : 321.23 ft.							

DETAILED DESCRIPTION :

ALUMINUM CAP SET IN CONCRETE, STAMPED "COLLEGE STATION MON. 242, 1994".
 THE MONUMENT IS LOCATED NORTH OF COLLEGE STATION ON THE WEST SIDE OF ELMO WEEDON ROAD. MONUMENT IS NORTH 0.30 MILE FROM THE INTERSECTION OF HIGHWAY 6 AND ELMO WEEDON ROAD. MONUMENT IS 39.0' FEET WEST OF CENTERLINE OF ELMO WEEDON ROAD AND 1.8 FEET EAST OF FENCE.

FIELD SKETCH



CITY OF COLLEGE STATION

HORIZONTAL CONTROL MONUMENT

MONUMENT NAME MON. 256		DATE ESTABLISHED 1994	STATE: TEXAS	COUNTY BRAZOS
NAD-27 GEODETIC POSITION		NAD-83 GEODETIC POSITION		
LATITUDE N 030° 33' 58.34108"		LATITUDE N 030° 33' 59.06547"		
LONGITUDE W 096° 14' 16.59967"		LONGITUDE W 096° 14' 17.45302"		
NAD-27 TEXAS STATE PLANE COORDINATES CENTRAL ZONE		NAD-83 TEXAS STATE PLANE COORDINATES CENTRAL ZONE (US Survey Feet)		
Y COORDINATE 350872.505		Y COORDINATE 10193454.128		
X COORDINATE 3288614.638		X COORDINATE 3585094.327		
CONVERGENCE = 2° 06' 33.72"		CONVERGENCE = 2° 06' 33.28"		
SCALE FACTOR = 0.9999104		SCALE FACTOR = 0.9999104		

G.P.S ELEVATION : 274.84 ft. (NGVD 1929 MEAN SEA LEVEL DATUM)

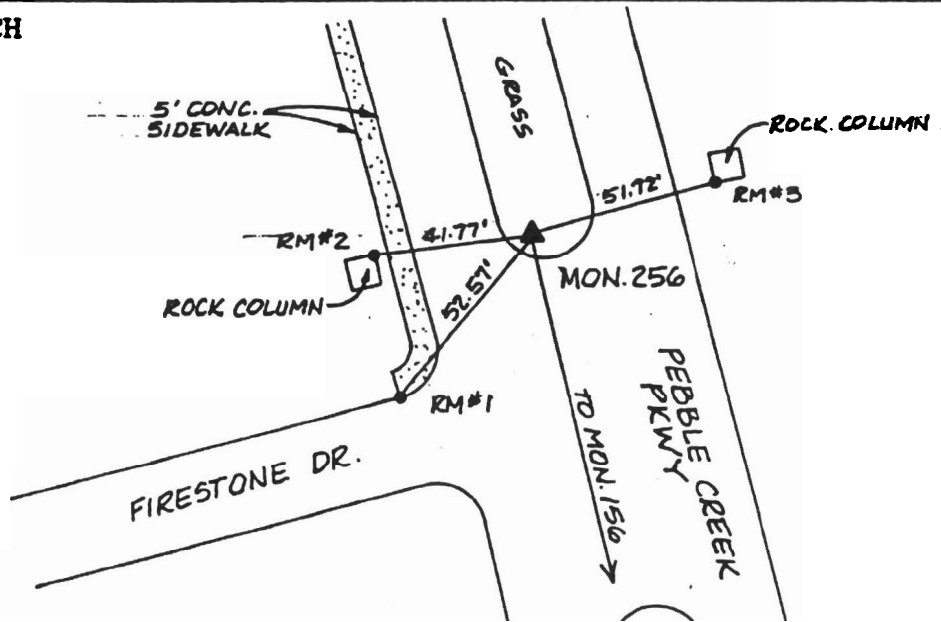
AZIMUTH MARK MONUMENT NO. 156	ASTRONOMIC AZIMUTH (FROM NORTH) N 143° 50' 30"	GRID AZIMUTH (FROM NORTH) N 141° 43' 57"
----------------------------------	---	---

REFERENCE MARK DESCRIPTION	DISTANCE (ft)	DIRECTION
MONUMENT 156	2255.13'	000°00'00"
1: 1/2" IRON PIN AT THE BACK OF CURB AND CORNER OF WALK	52.57'	054°18'58"
2: TOP NORTHEAST CORNER OF ROCK COLUMN	41.77'	096°45'54"
RM 3: TOP SOUTHWEST CORNER OF ROCK COLUMN	51.72'	268°45'07"

DETAILED DESCRIPTION :

ALUMINUM CAP SET IN CONCRETE, STAMPED "COLLEGE STATION MON. 256, 1994".
THE MONUMENT IS LOCATED SOUTH OF COLLEGE STATION IN THE GRASS MEDIAN OF PEBBLE CREEK PARKWAY. MONUMENT IS AT THE INTERSECTION OF PEBBLE CREEK PARKWAY AND FIRESTONE DRIVE IN THE GRASS MEDIAN. MONUMENT IS LOCATED 1.0 FOOT FROM THE BACK OF CURB.

FIELD SKETCH



CITY OF COLLEGE STATION

HORIZONTAL CONTROL MONUMENT

MONUMENT NAME .. 261		DATE ESTABLISHED 1994	STATE: TEXAS	COUNTY BRAZOS
NAD-27 GEODETIC POSITION		NAD-83 GEODETIC POSITION		
LATITUDE N 030° 33' 13.28276"		LATITUDE N 030° 33' 14.00751"		
LONGITUDE W 096° 11' 09.05442"		LONGITUDE W 096° 11' 09.90317"		
NAD-27 TEXAS STATE PLANE COORDINATES CENTRAL ZONE		NAD-83 TEXAS STATE PLANE COORDINATES CENTRAL ZONE (US Survey Feet)		
Y COORDINATE 346931.159		Y COORDINATE 10189512.625		
X COORDINATE 3305168.742		X COORDINATE 3601648.459		
CONVERGENCE = 2° 08' 10.32"		CONVERGENCE = 2° 08' 09.88"		
SCALE FACTOR = 0.9999121		SCALE FACTOR = 0.9999120		

G.P.S ELEVATION : 200.12 ft. (NGVD 1929 MEAN SEA LEVEL DATUM)

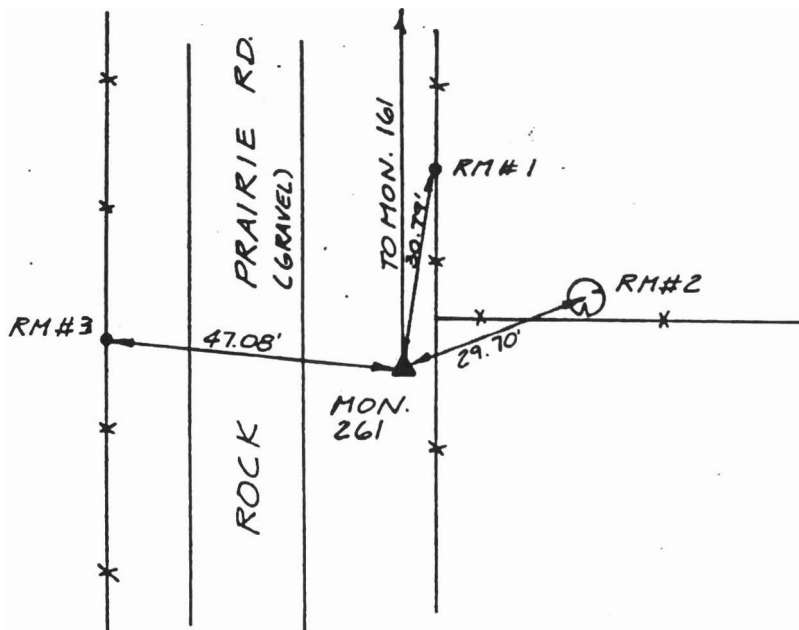
AZIMUTH MARK MONUMENT 161	ASTRONOMIC AZIMUTH (FROM NORTH) N 359° 02' 44"	GRID AZIMUTH (FROM NORTH) N 356° 54' 34"
------------------------------	---	---

REFERENCE MARK DESCRIPTION	DISTANCE (ft)	DIRECTION
MONUMENT 161	997.25'	000°00'00"
RM 1: P.K. NAIL WITH SHINER IN FENCE POST AT GAP	30.79'	080°08'02"
RM 2: P.K. NAIL WITH SHINER IN 6" HACKBERRY	29.70'	071°21'53"
RM 3: P.K. NAIL WITH SHINER IN H BRACE POST	47.08'	276°07'43"

DETAILED DESCRIPTION :

ALUMINUM CAP SET IN CONCRETE, STAMPED "COLLEGE STATION MON. 261, 1994".
THE MONUMENT IS LOCATED IN COLLEGE STATION, ON THE EAST SIDE OF ROCK PRAIRIE ROAD (GRAVEL). THE MONUMENT IS NORTH APPROXIMATELY 175 FEET OF THE INTERSECTION OF SULPHUR SPRINGS ROAD AND ROCK PRAIRIE ROAD. MONUMENT IS 1.2 FEET EAST OF A FENCE LINE AND 24.0 FEET WEST OF THE CENTERLINE OF ROCK PRAIRIE ROAD .

FIELD SKETCH



PHOTOGRAMMETRIC CONTROL SURVEY

Kucera International, Inc
College Station, Brazos County, TX

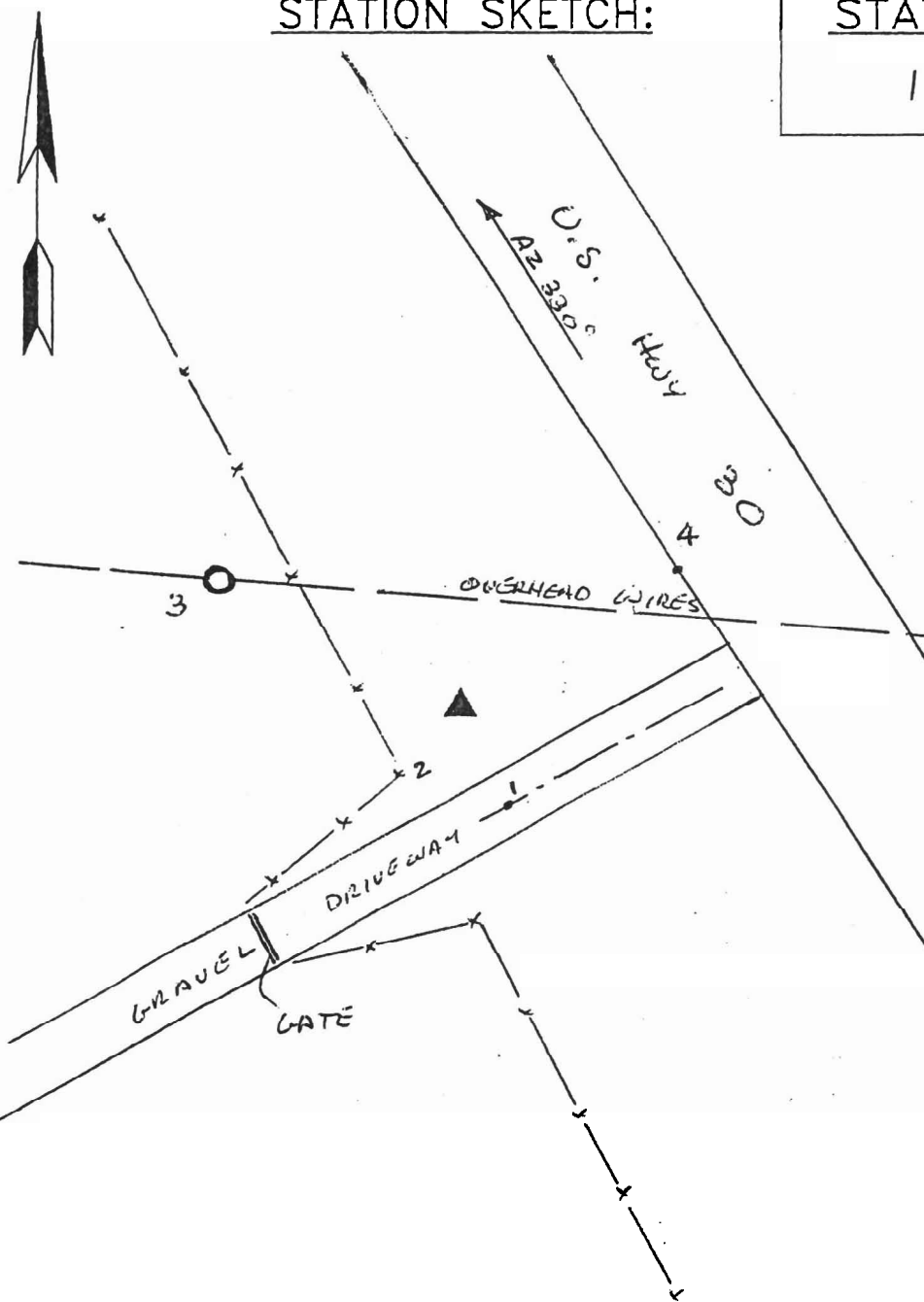
The coordinates and elevations shown below were surveyed using the following published federal, state, and county survey control points: 101, 135, and 261.

NAD83, NGVD29
Texas, Central Zone
U.S. Survey Foot

STATION	LATITUDE	LONGITUDE	NORTHING	EASTING	ELEV	REMARKS
1	30°36'49.45301"N	96°11'36.48594"W	10211176.23	3598516.08	195.24	Rebar & Cap
2	30°33'35.22591"N	96°25'14.05330"W	10188981.65	3527815.82	234.84	Rebar & Cap
3	30°28'40.41298"N	96°17'57.53286"W	10160580.86	3567034.79	276.45	Rebar & Cap
4	30°28'34.24322"N	96°14'08.43491"W	10160690.51	3587090.65	305.78	Rebar & Cap
5	30°29'42.01103"N	96°11'09.93502"W	10168110.63	3602443.94	249.00	Rebar & Cap
6	30°30'45.99423"N	96°21'03.40507"W	10172673.58	3550327.27	270.59	Rebar & Cap
7	30°31'46.37108"N	96°11'49.32845"W	10180537.03	3598532.94	229.18	Rebar & Cap
8	30°32'15.82110"N	96°20'46.75159"W	10181794.60	3551457.82	275.21	Rebar & Cap

Checked by: Kro

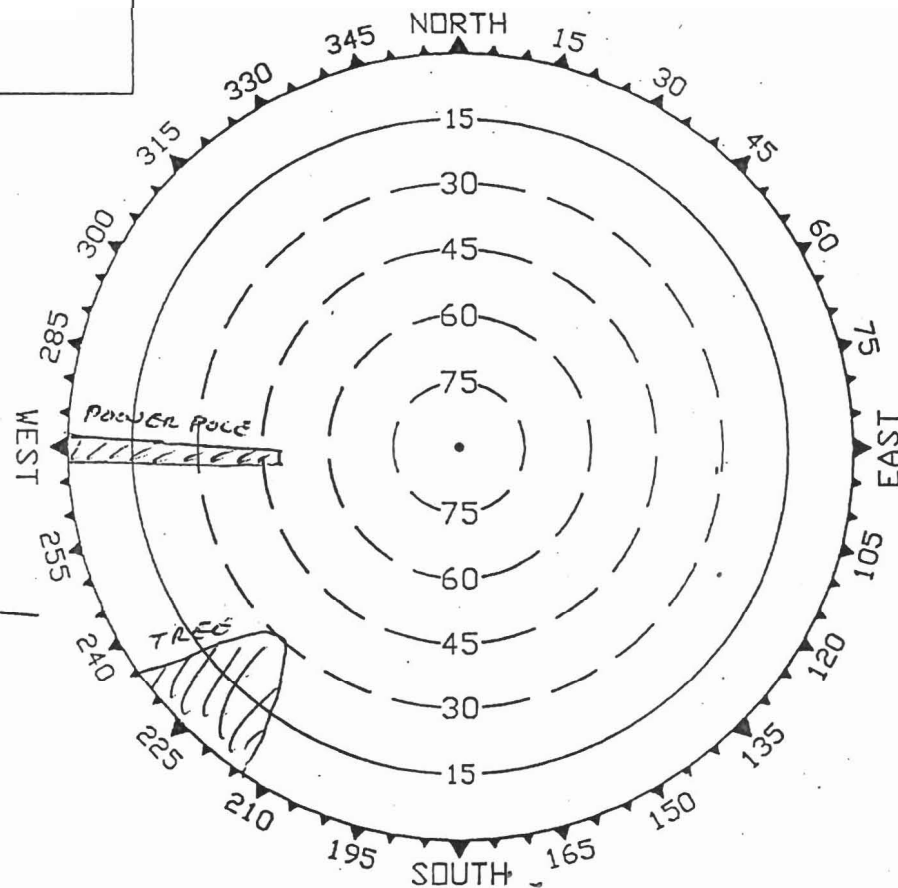
STATION SKETCH:



STATION:

1

OBSTRUCTION DIAGRAM:

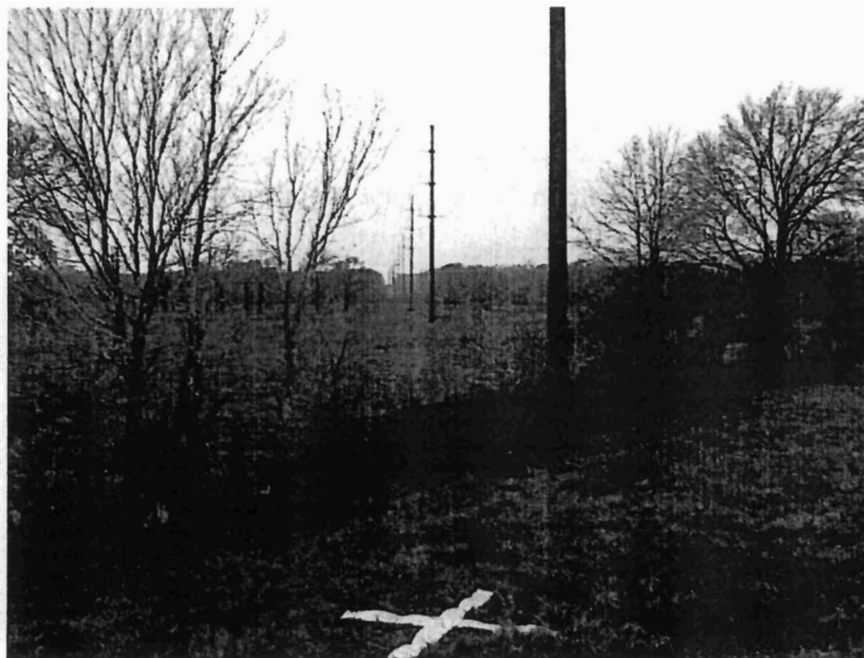


REFERENCE TIES (CLOCKWISE FROM NORTH):

	DIST	AZ	DESCRIPTION
1	43'	120°	℄ OF GRAVEL D/W
2	28'	180°	FENCE CORNER
3	75'	280°	POWER POLE #81
4	61'	30°	EDGE OF PAVEMENT OF U.S. HWY 30
5			
6			

ROAD TIES:

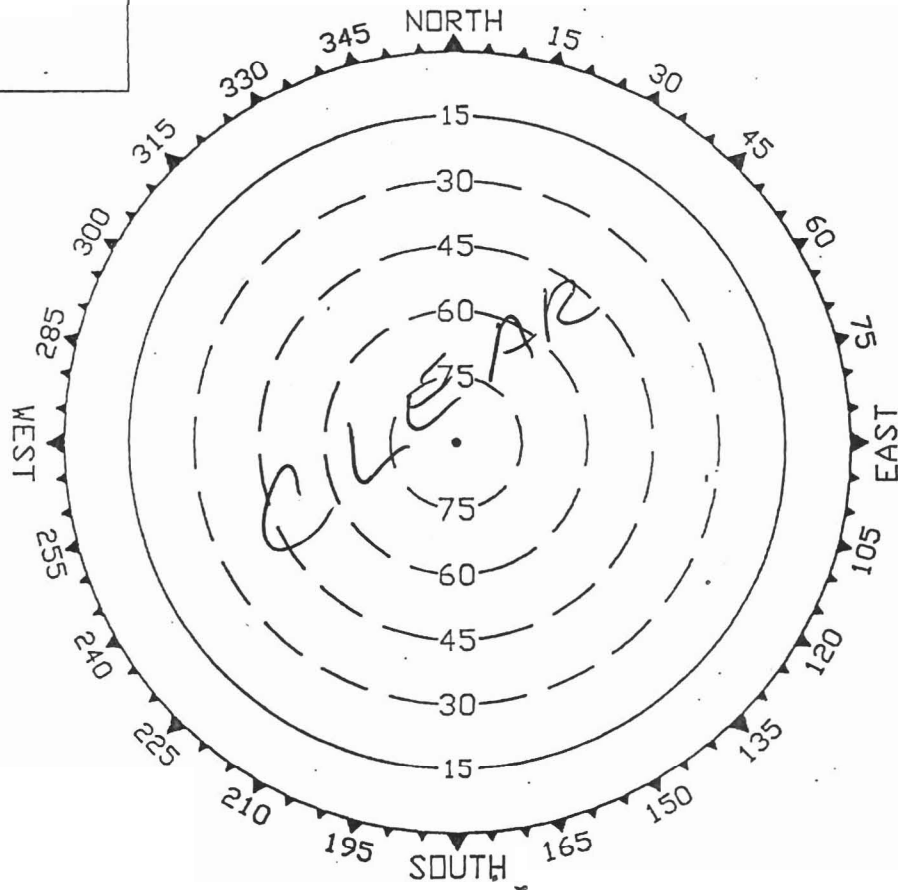
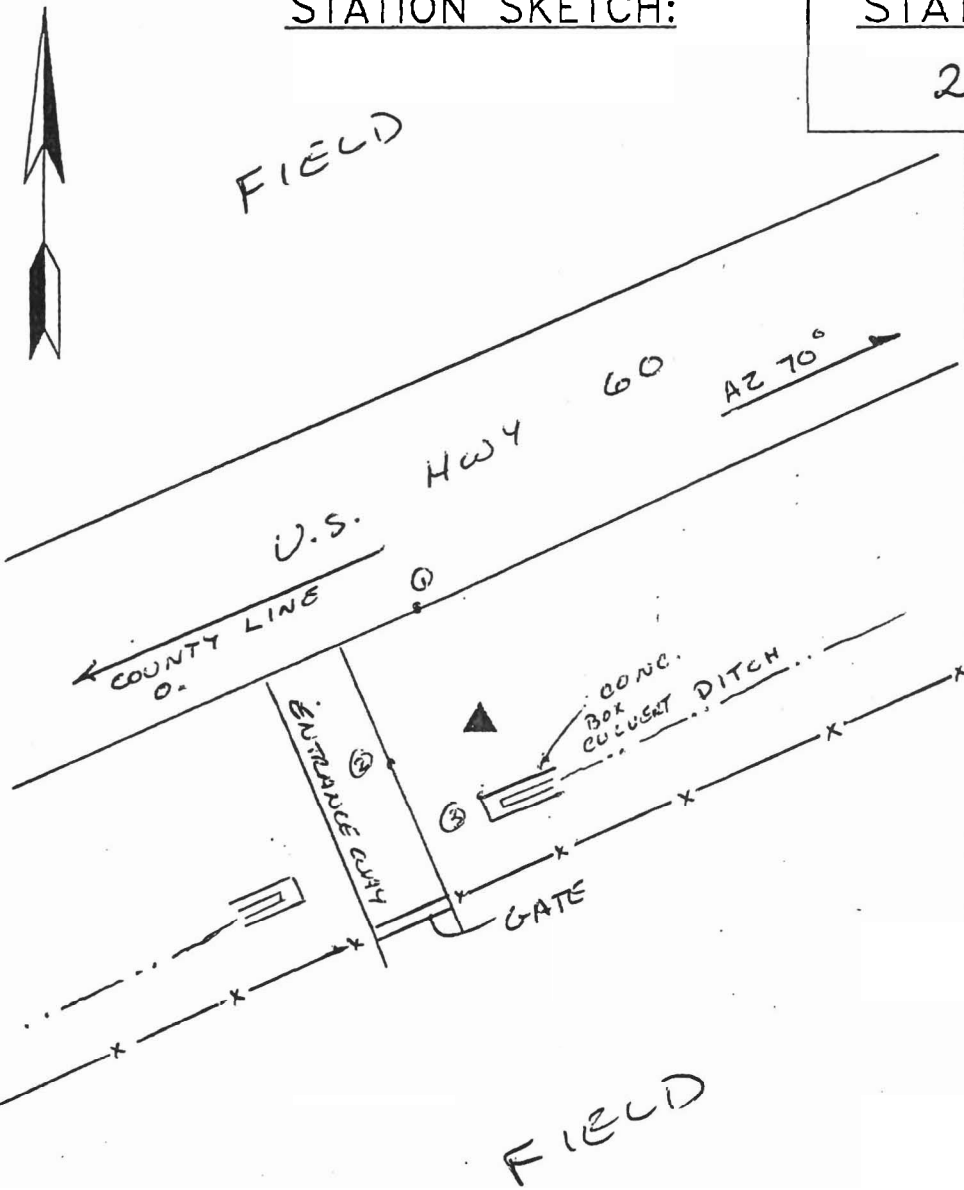
ROAD NAME AND/OR ROUTE NUMBER	NEED 2 OF 3:	TO EP	TO ℄	WIDTH	PAVE	GRAV	SOIL	CO



STATION SKETCH:

STATION:

OBSTRUCTION DIAGRAM:



REFERENCE TIES (CLOCKWISE FROM NORTH):

	DIST	AZ	DESCRIPTION
1	12.0'	340°	EDGE OF PAVEMENT
2	8.0'	250°	EDGE OF PAVEMENT
3	6.8'	150°	CORNER OF CONC. BOX CULVERT
4			
5			
6			

ROAD TIES:

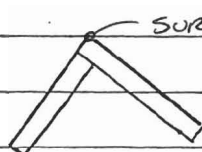
ROAD NAME AND/OR ROUTE NUMBER	TO EP	TO CL	WIDTH	PAVE	GRAY	SOIL	CUNC



Date: <u>Jan 29/05</u>	Station Name & No.	Type of Mark <u>REBAR & CAP</u>
County: <u>BRAZOS</u>	<u>3</u>	Established by: <u>KUCERA</u>
Quad:		Stamping:

LANDMARKS (CHURCHES/GROCERY STORES/ETC) AND ADDRESS ARE VERY IMPORTANT.
NO DISTANCE SHOULD BE MORE THAN FIVE (5) MILES.

To reach the station from the intersection of (U.S. Hwy or Interstate) STOUSLAND ROAD and
TAYLOR ROAD go (N-S-E-W) on STOUSLAND ROAD for 0.30 miles to its intersection with
_____. Turn/continue (right/left) and go (N-S-E-W) on _____
for _____ miles to its intersection with _____. Turn/continue (right/left) and go (N-S-E-W)
on _____ for _____ miles to its intersection with _____. Turn/continue
(right/left) and go (N-S-E-W) on _____ for _____ miles to its intersection with
_____. Turn/continue (right/left) and go (N-S-E-W) on _____ for
_____ miles to its intersection with _____. Turn/continue (right/left) and go (N-S-E-W) on
_____ for _____ miles to its intersection with _____. Turn/continue
(right/left) and go (N-S-E-W) on _____ for _____ miles to its intersection with
_____. Turn/continue (right/left) on _____ for _____ miles to its
intersection with _____. Turn/continue (right/left) and go (N-S-E-W) on _____
for _____ miles to its intersection with _____. The station is on the right/left. Below for any
additional information which might be important about the to reach or the mark. The station is



8' x 12" CHEVRON

TARGET IS FLUSH WITH CAP

PICTURES: #9 SOUTH
#10 WEST

MOVED: ORIGINAL
LOCATION IS IN
MIDDLE OF PRIVATE
FARM WITH NO ACCESS
GRANTED

NEW LOCATION IS AT
CLOSE TO SAME
LATITUDE

GEO METRICS
GPS, INC.

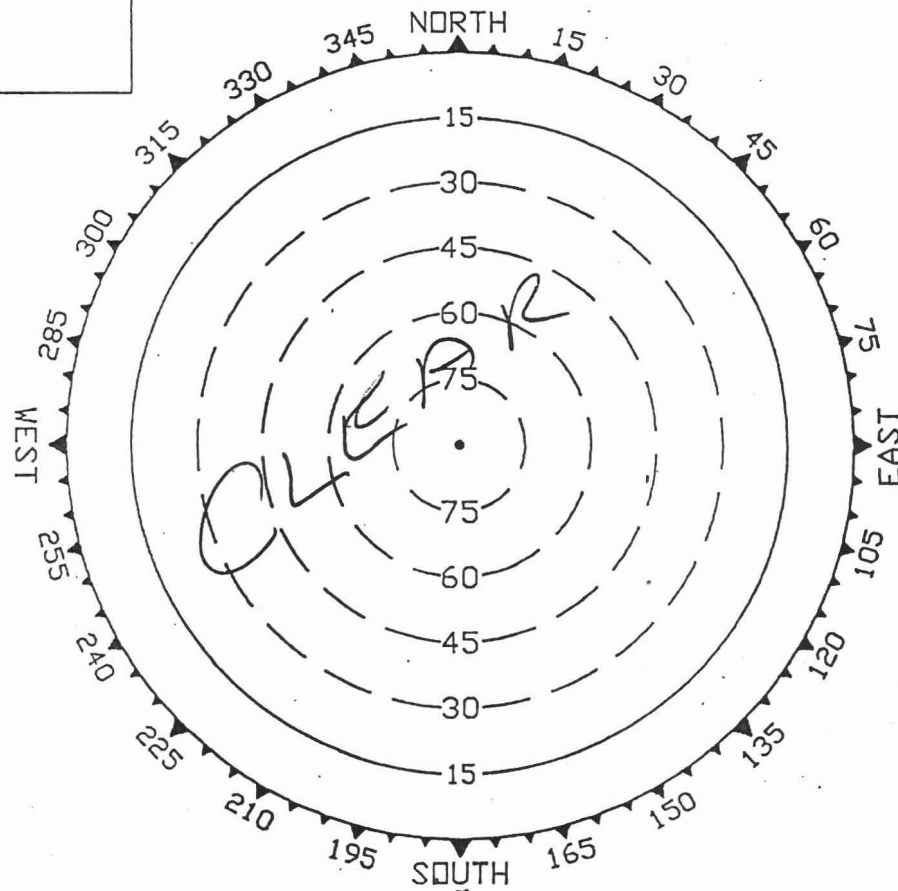


STATION SKETCH:

STATION:

3

OBSTRUCTION DIAGRAM:



REFERENCE TIES (CLOCKWISE FROM NORTH):

	DIST	AZ	DESCRIPTION
1	2.5	130°	FENCELINE
2	21.0	310°	EDGE OF PAVEMENT
3			
4			
5			
6			

ROAD TIES:

NEED 2 OF 3:

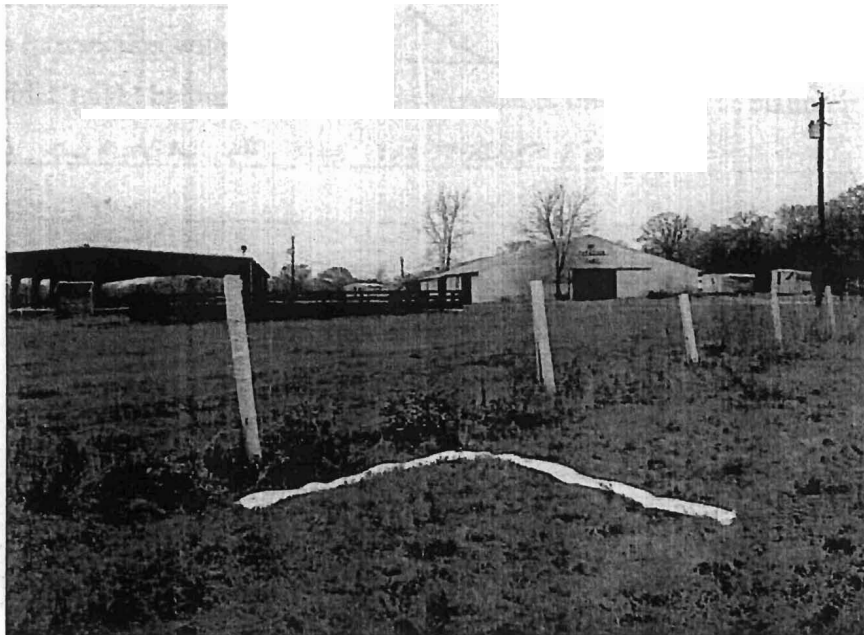
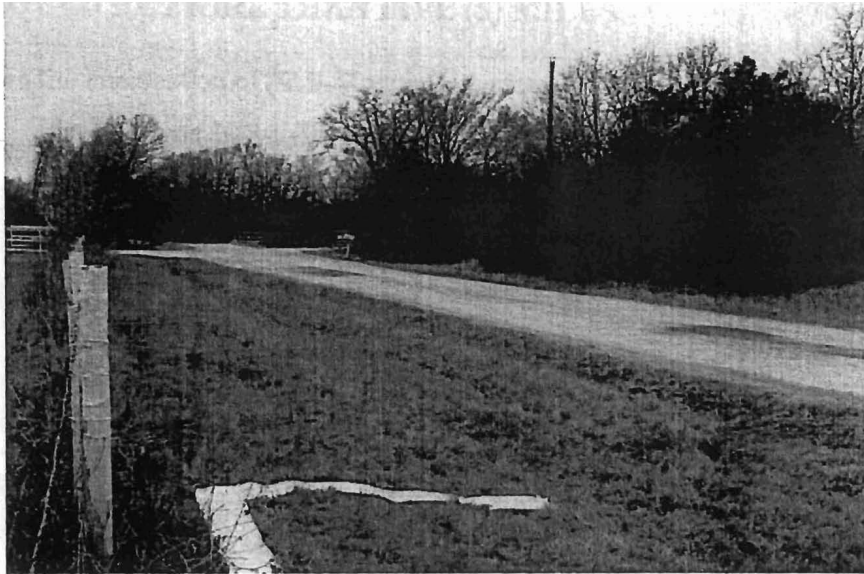
ROAD NAME AND/OR ROUTE NUMBER

TO EP TO E

WIDTH

PAVE
GRAY
SOIL
CONC

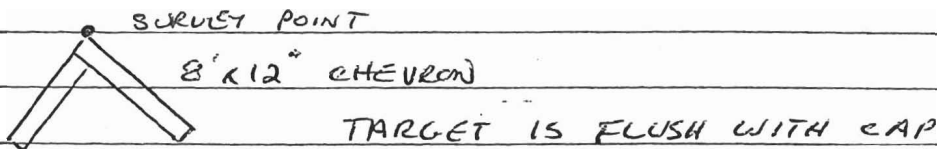
TOPSIDER FARM



Date: <u>Jan 29 / 05</u>	Station Name & No.	Type of Mark <u>REBAR & CAP</u>
County: <u>BRAZOS</u>	<u>4</u>	Established by: <u>KUCERA</u>
Quad:		Stamping:

LANDMARKS (CHURCHES/GROCERY STORES/ETC) AND ADDRESS ARE VERY IMPORTANT. NO DISTANCE SHOULD BE MORE THAN FIVE (5) MILES.

To reach the station from the intersection of (U.S. Hwy or Interstate) F.M. 2154 RD and DAY ROAD go (N-S-E-W) on _____ for _____ miles to its intersection with _____. Turn/continue (right/left) and go (N-S-E-W) on _____ for _____ miles to its intersection with _____. Turn/continue (right/left) and go (N-S-E-W) on _____ for _____ miles to its intersection with _____. Turn/continue (right/left) and go (N-S-E-W) on _____ for _____ miles to its intersection with _____. Turn/continue (right/left) and go (N-S-E-W) on _____ for _____ miles to its intersection with _____. Turn/continue (right/left) and go (N-S-E-W) on _____ for _____ miles to its intersection with _____. Turn/continue (right/left) and go (N-S-E-W) on _____ for _____ miles to its intersection with _____. Turn/continue (right/left) and go (N-S-E-W) on _____ for _____ miles to its intersection with _____. Turn/continue (right/left) and go (N-S-E-W) on _____ for _____ miles to its intersection with _____. The station is on the right/left. Below for any additional information which might be important about the to reach or the mark. The station is IN THE N/W CORNER OF THE INTERSECTION.



PICTURES: *15 N/W
*16 S/E

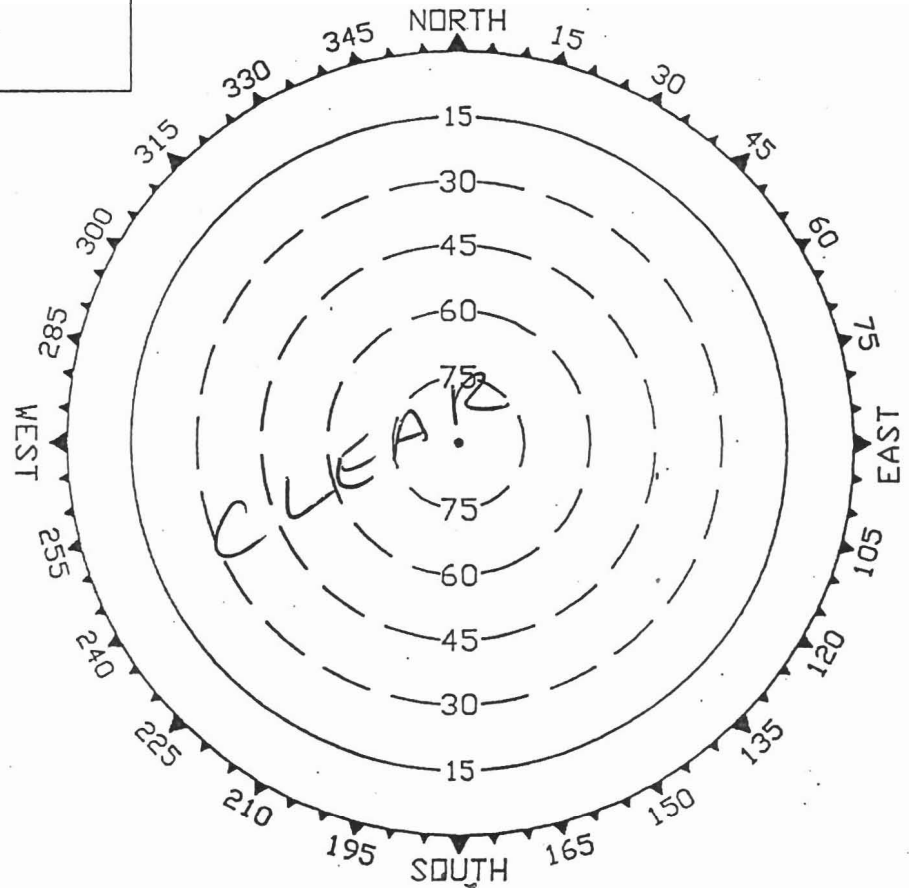
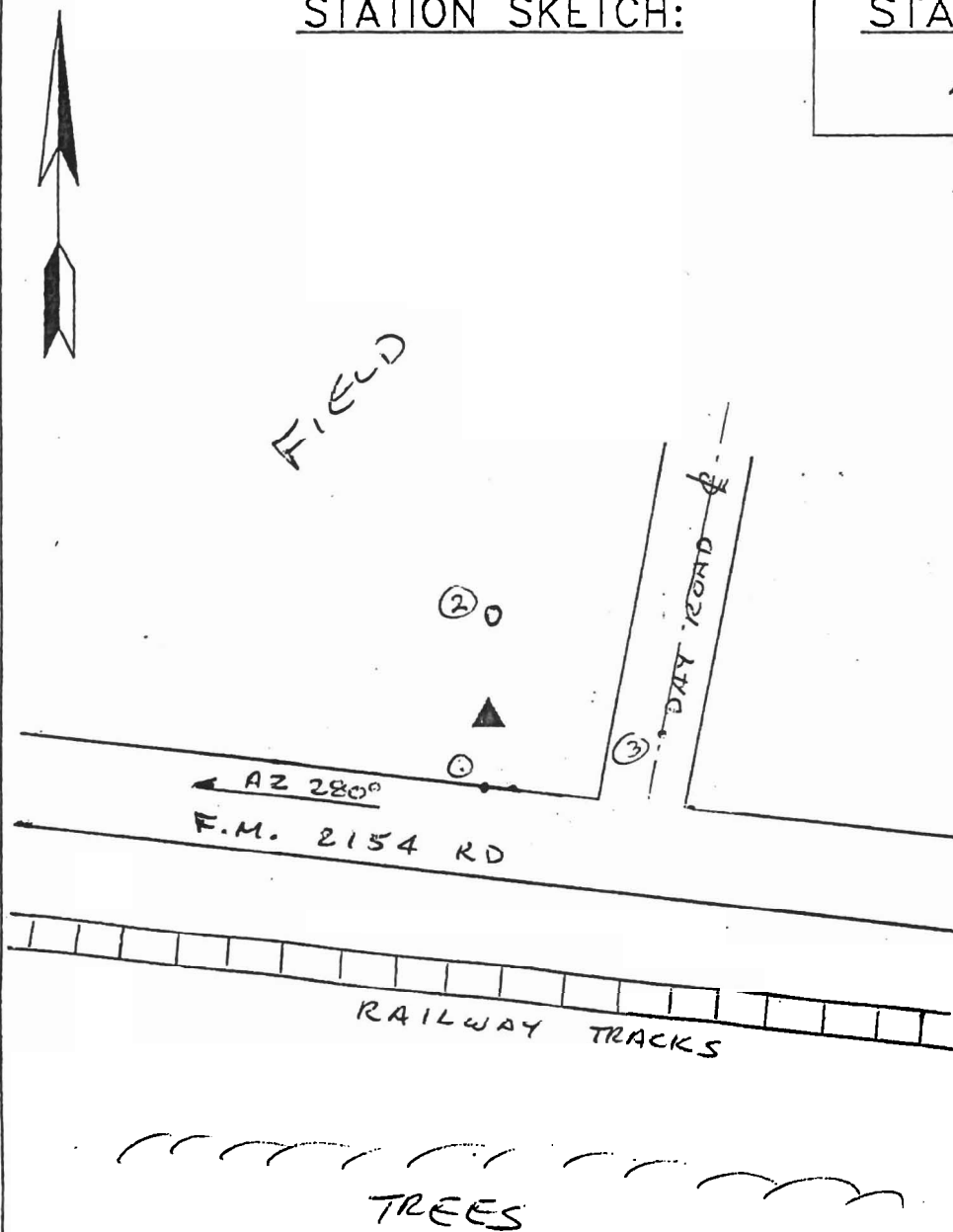


STATION SKETCH:

STATION:

4

OBSTRUCTION DIAGRAM:



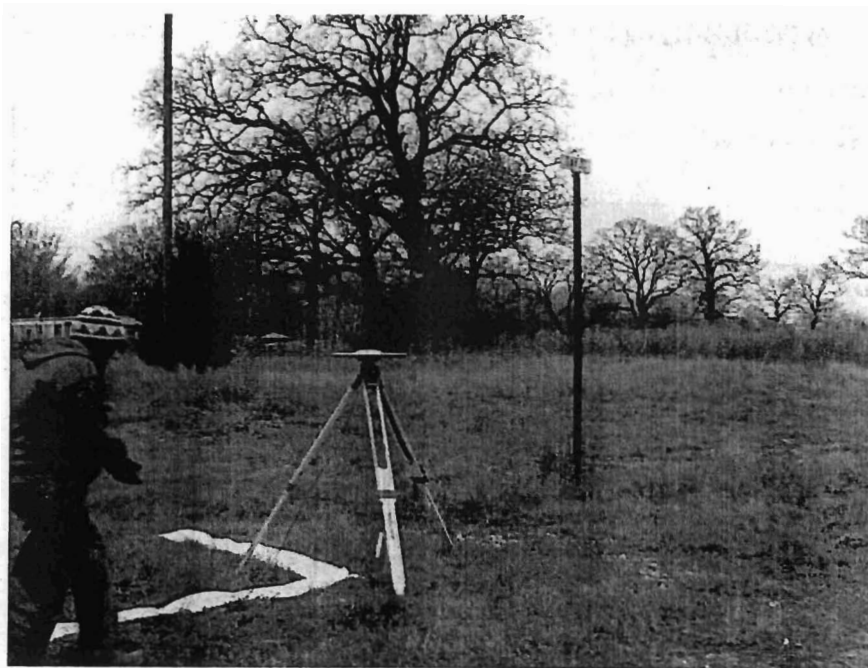
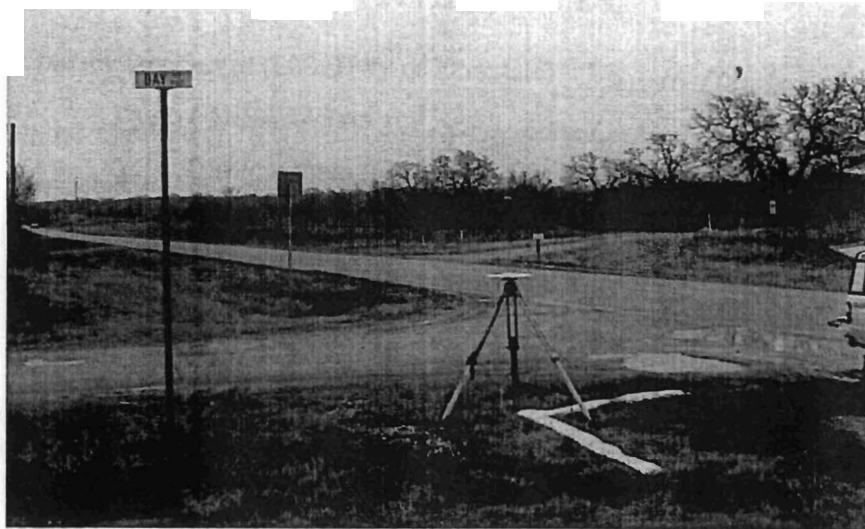
REFERENCE TIES (CLOCKWISE FROM NORTH):

	DIST	AZ	DESCRIPTION
1	25.0'	200°	EDGE OF PAVEMENT
2	13.0'	0°	STREET SIGN
3	18'	120°	OF DAY ROAD
4			
5			
6			

ROAD TIES:

NEED 2 OF 3:

ROAD NAME AND/OR ROUTE NUMBER	TO EP	TO C	WIDTH	PAVE	GRAY	SOIL	CUNC

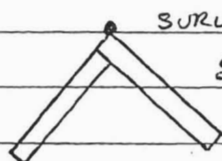


Date: <u>Jan 29 / 05</u>	Station Name & No.	Type of Mark <u>REBAR & CAP</u>
County: <u>BRAZOS</u>	<u>5</u>	Established by: <u>KUCERA</u>
Quad:		Stamping:

LANDMARKS (CHURCHES/GROCERY STORES/ETC) AND ADDRESS ARE VERY IMPORTANT. NO DISTANCE SHOULD BE MORE THAN FIVE (5) MILES.

To reach the station from the intersection of (U.S. Hwy or Interstate) U.S. HWY 6 and PEACH CREEK RD go (N-S-E-W) on U.S. HWY 6 for 1.0 miles to its intersection with _____. Turn/continue (right/left) and go (N-S-E-W) on _____ for _____ miles to its intersection with _____. Turn/continue (right/left) and go (N-S-E-W) on _____ for _____ miles to its intersection with _____. Turn/continue (right/left) and go (N-S-E-W) on _____ for _____ miles to its intersection with _____. Turn/continue (right/left) and go (N-S-E-W) on _____ for _____ miles to its intersection with _____. Turn/continue (right/left) and go (N-S-E-W) on _____ for _____ miles to its intersection with _____. Turn/continue (right/left) and go (N-S-E-W) on _____ for _____ miles to its intersection with _____. Turn/continue (right/left) and go (N-S-E-W) on _____ for _____ miles to its intersection with _____. The station is on the right left. Below for any additional information which might be important about the to reach or the mark. The station is

IN A PARK/~~PARK~~ PICNIC AREA



SURVEY POINT

8' x 12"

TARGET FLUSH WITH CAP

PICTURES: *13 WEST

*14 SOUTH

MOVED ORIGINAL LOCATION ON PRIVATE PARK
NO ACCESS GRANTED

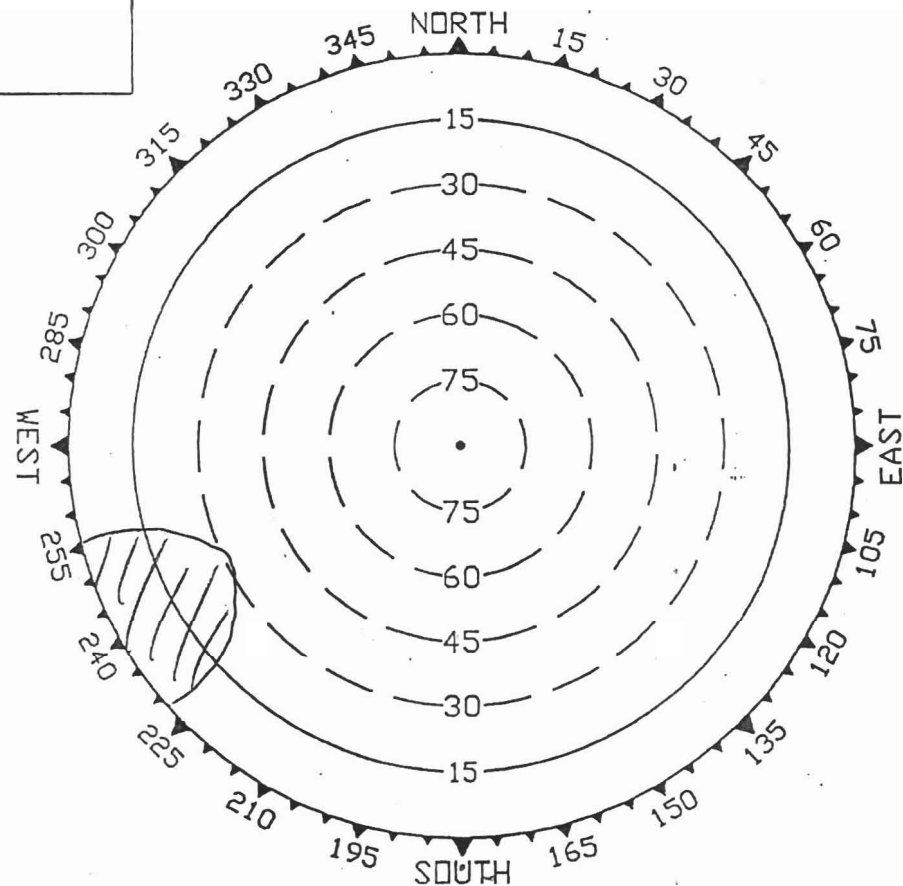
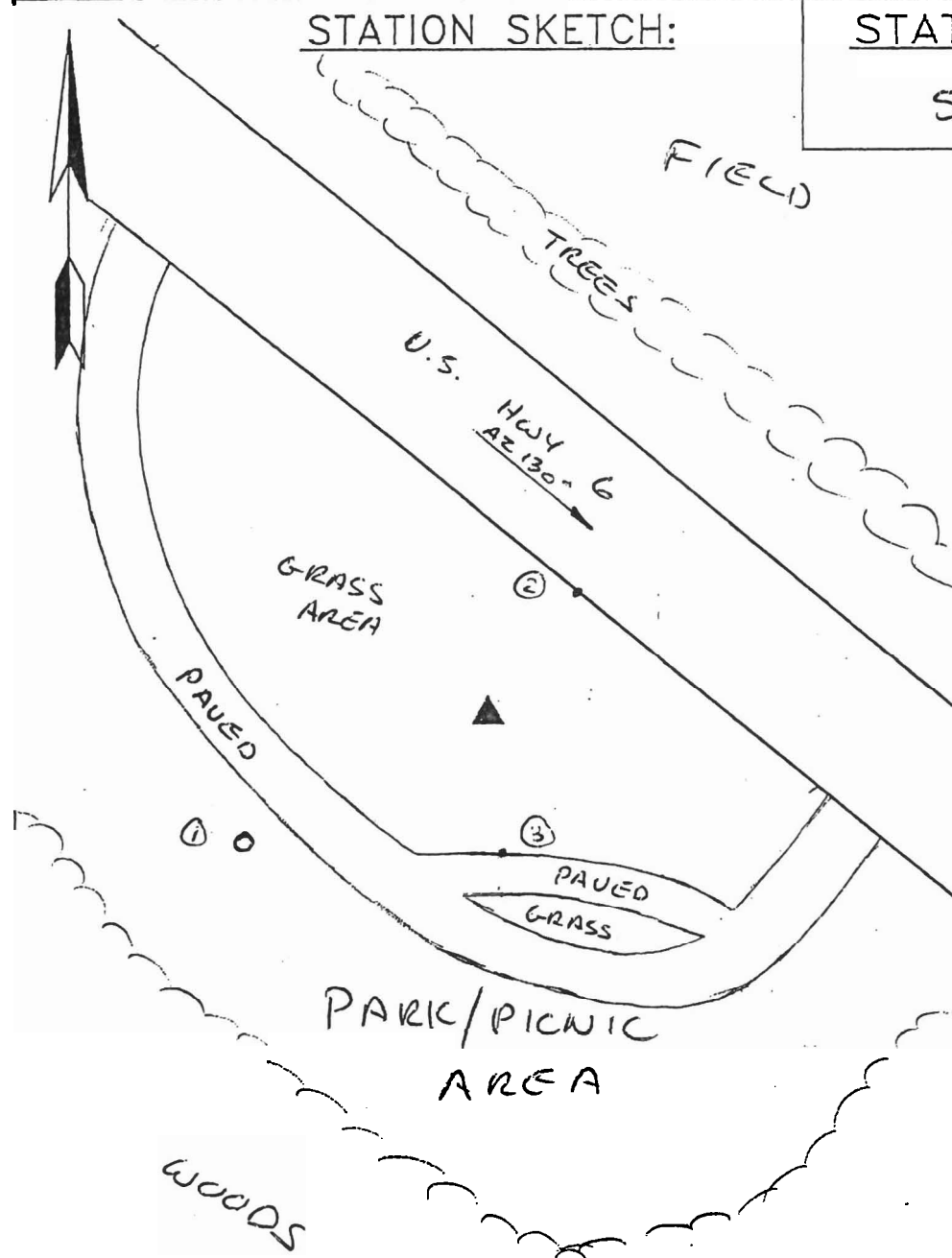


STATION SKETCH:

STATION:

5

OBSTRUCTION DIAGRAM:



REFERENCE TIES (CLOCKWISE FROM NORTH):

	DIST	AZ	DESCRIPTION
1	64.3'	250°	PARK "NOTICE" SIGN
2	57.0'	40°	WHITE LINE OF TRAVEL LANE OF U.S. HWY 6
3	17.3'	170°	BACK OF CURB
4			
5			
6			

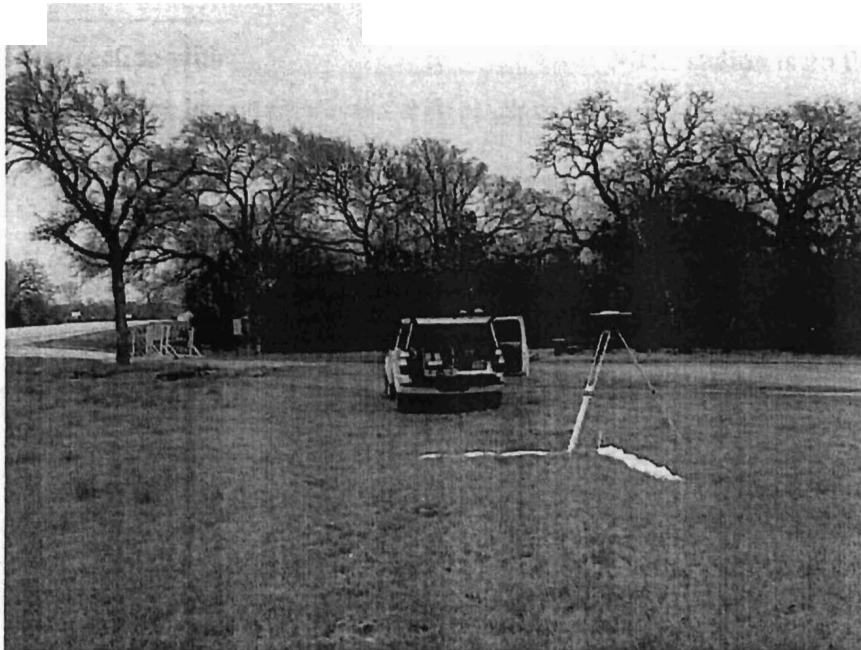
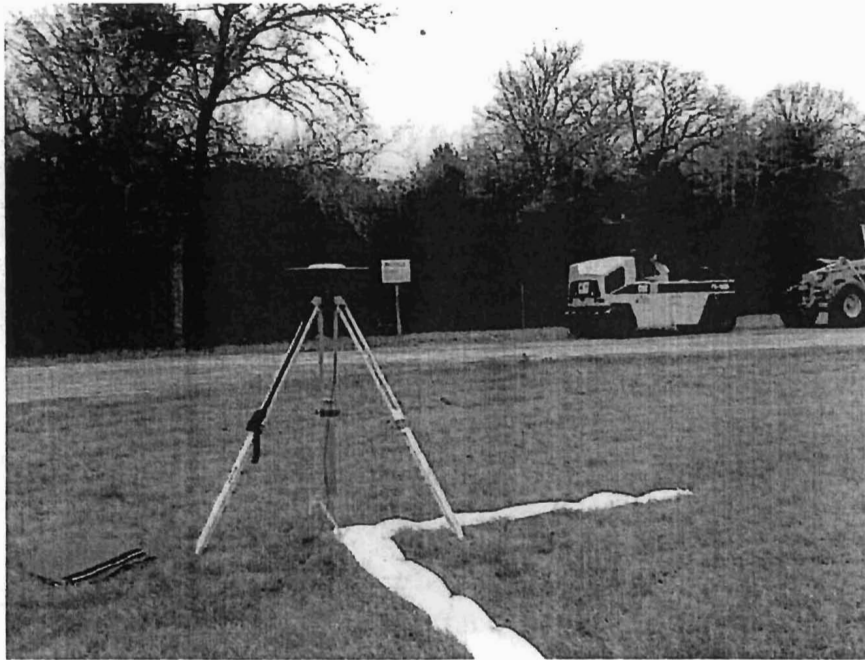
ROAD TIES:

NEED 2 OF 3:

ROAD NAME AND/OR ROUTE NUMBER

TO EP TO C WIDTH

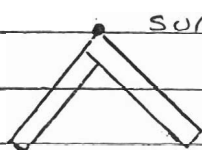
PAVE GRAY SOIL CONC



Date: <u>Jan 29</u>	Station Name & No.	Type of Mark <u>REBAR & CAP</u>
County: <u>BRAZOS</u>	<u>6</u>	Established by: <u>KUCERA</u>
Quad:		Stamping:

LANDMARKS (CHURCHES/GROCERY STORES/ETC) AND ADDRESS ARE VERY IMPORTANT. NO DISTANCE SHOULD BE MORE THAN FIVE (5) MILES.

To reach the station from the intersection of (U.S. Hwy or Interstate) HOPES CREEK RD and KOPPE BRIDGE RD go (N-S-E-W) on KOPPE BRIDGE RD for 0.65 miles to its intersection with _____ . Turn/continue (right/left) and go (N-S-E-W) on _____ for _____ miles to its intersection with _____ . Turn/continue (right/left) and go (N-S-E-W) on _____ for _____ miles to its intersection with _____ . Turn/continue (right/left) and go (N-S-E-W) on _____ for _____ miles to its intersection with _____ . Turn/continue (right/left) and go (N-S-E-W) on _____ for _____ miles to its intersection with _____ . Turn/continue (right/left) and go (N-S-E-W) on _____ for _____ miles to its intersection with _____ . Turn/continue (right/left) and go (N-S-E-W) on _____ for _____ miles to its intersection with _____ . Turn/continue (right/left) and go (N-S-E-W) on _____ for _____ miles to its intersection with _____ . The station is on the right/left. Below for any additional information which might be important about the to reach or the mark. The station is



SURVEY POINT

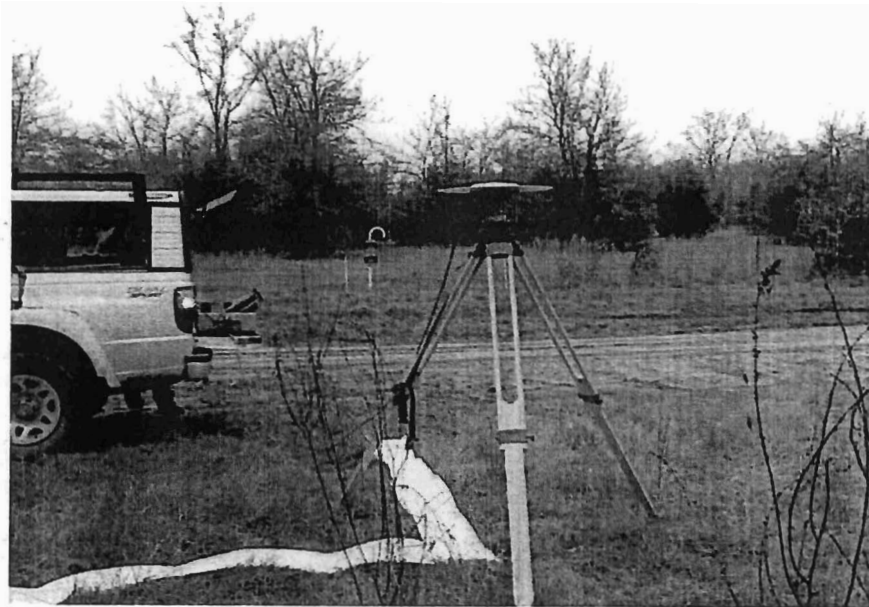
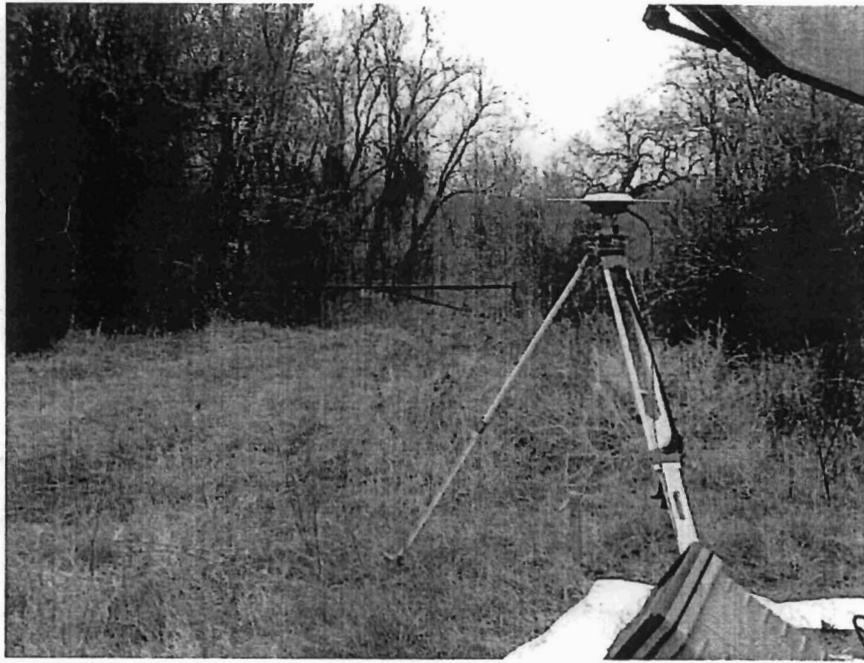
TARGET IS FLUSH WITH CAP

PICTURES : #7 SOUTH

8' x 12" CHEVRON

#8 WEST



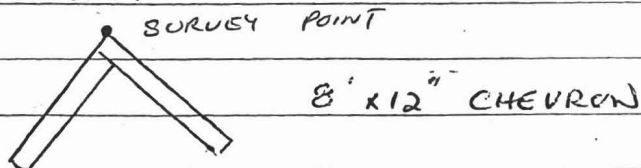


Date: <u>Jan 29/05</u>	Station Name & No. <u>7</u>	Type of Mark <u>REBAR & CAP</u>
County: <u>BEAZOS</u>		Established by: <u>KUCERA</u>
Quad:		Stamping:

LANDMARKS (CHURCHES/GROCERY STORES/ETC) AND ADDRESS ARE VERY IMPORTANT. NO DISTANCE SHOULD BE MORE THAN FIVE (5) MILES.

To reach the station from the intersection of (U.S. Hwy or Interstate) PEACH CREEK RD and ROCK PRAIRIE and PEACH CROSSING DR go (N-S-E-W) on _____ for _____ miles to its intersection with _____ Turn/continue (right/left) and go (N-S-E-W) on _____ for _____ miles to its intersection with _____ Turn/continue (right/left) and go (N-S-E-W) on _____ for _____ miles to its intersection with _____ Turn/continue (right/left) and go (N-S-E-W) on _____ for _____ miles to its intersection with _____ Turn/continue (right/left) and go (N-S-E-W) on _____ for _____ miles to its intersection with _____ Turn/continue (right/left) and go (N-S-E-W) on _____ for _____ miles to its intersection with _____ Turn/continue (right/left) and go (N-S-E-W) on _____ for _____ miles to its intersection with _____ The station is on the right/left. Below for any additional information which might be important about the to reach or the mark The station is

IN THE N/E CORNER OF THE INTERSECTION, @ PEACH CROSSING
SUBDIVISION.

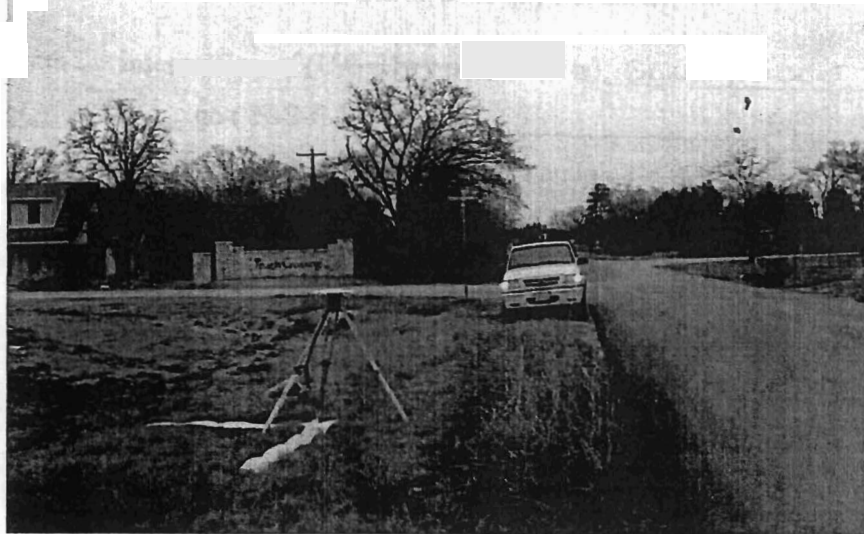


TARGET IS FLUSH WITH CAP

PICTURES: #11 EAST
#12 SOUTH

MOVED ORIGINAL LOCATION
IN MIDDLE OF FARM



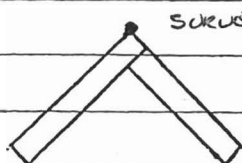


Date: Jan 29/05	Station Name & No. 8	Type of Mark REBAR AND CAP
County: BRAZOS		Established by: KUCERA
Quad:		Stamping:

LANDMARKS (CHURCHES/GROCERY STORES/ETC) AND ADDRESS ARE VERY IMPORTANT.
NO DISTANCE SHOULD BE MORE THAN FIVE (5) MILES.

To reach the station from the intersection of (~~U.S. Hwy or Interstate~~) BLUE RIDGE DR and
VALLEY CIRCLE go (N-S-E-W) on _____ for _____ miles to its intersection with
_____. Turn/continue (right/left) and go (N-S-E-W) on _____
for _____ miles to its intersection with _____. Turn/continue (right/left) and go (N-S-E-W)
on _____ for _____ miles to its intersection with _____. Turn/continue
(right/left) and go (N-S-E-W) on _____ for _____ miles to its intersection with
_____. Turn/continue (right/left) and go (N-S-E-W) on _____ for
_____ miles to its intersection with _____. Turn/continue (right/left) and go (N-S-E-W) on
_____ for _____ miles to its intersection with _____. Turn/continue
(right/left) and go (N-S-E-W) on _____ for _____ miles to its intersection with
_____. Turn/continue (right/left) on _____ for _____ miles to its
intersection with _____. Turn/continue (right/left) and go (N-S-E-W) on _____
for _____ miles to its intersection with _____. The station is on the right/left. Below for any
additional information which might be important about the to reach or the mark. The station is

IN THE N/E CORNER OF THE INTERSECTION.



SURVEY POINT

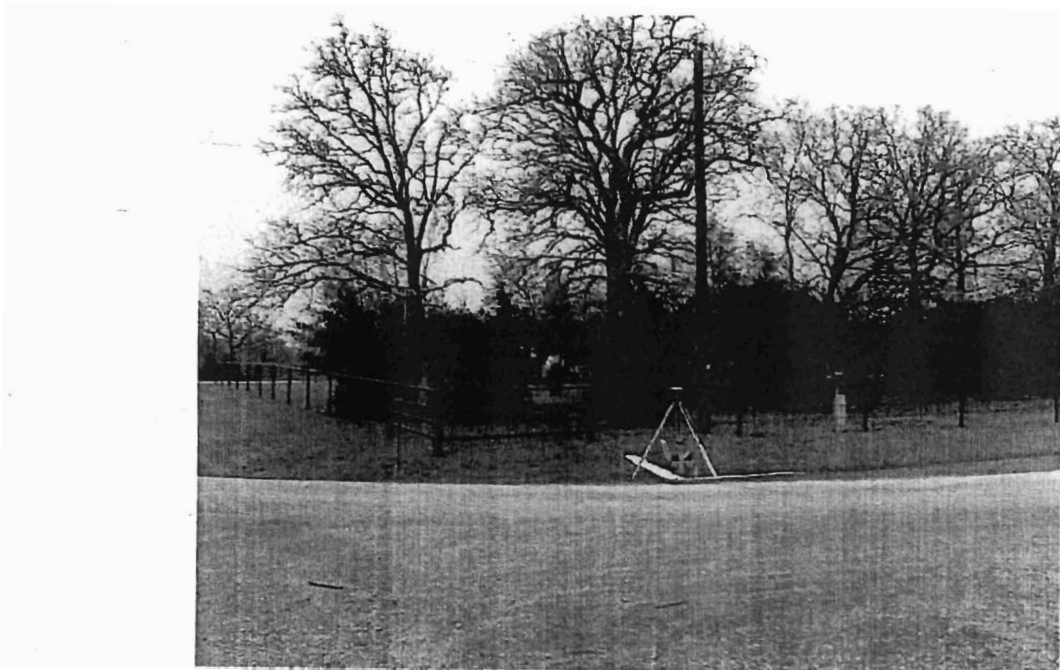
8' x 12' CHEVRON

PICTURES: 5 west

* 6 NORTH

TARGET FLUSH WITH CAP





College Station - Kucera

