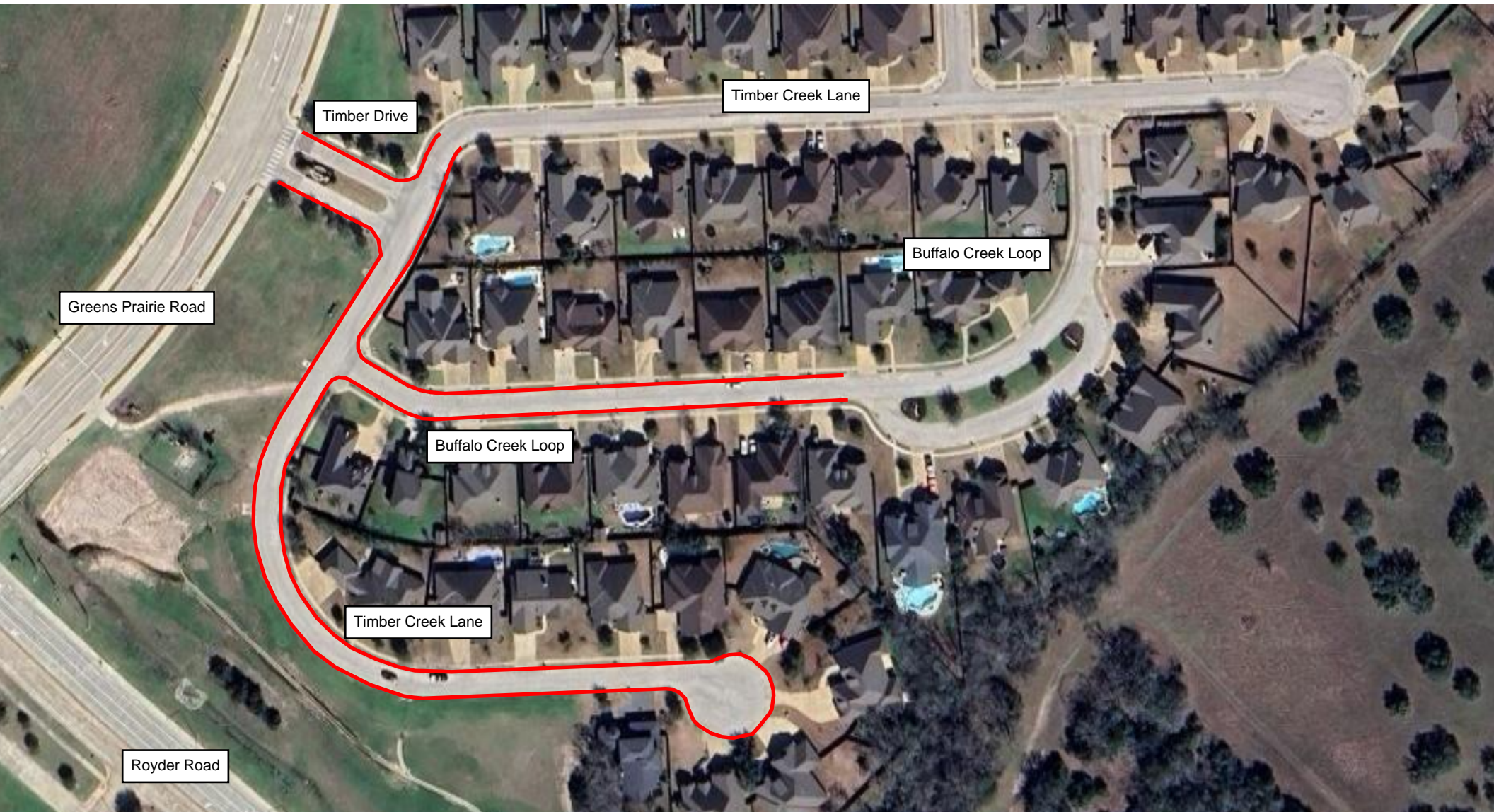


Proposed No Parking, Standing, or Stopping*

**On school days, from 7:00 a.m. to 9:00 a.m. and 2:30 p.m. to 4:30 p.m.*



- No Parking/Standing/Stopping* areas include:
- Timber Drive,
 - Timber Creek Lane (south of Timber Drive and 50 feet north of Timber Drive),
 - Buffalo Creek Loop (525 feet east of western intersection with Timber Creek Lane)