

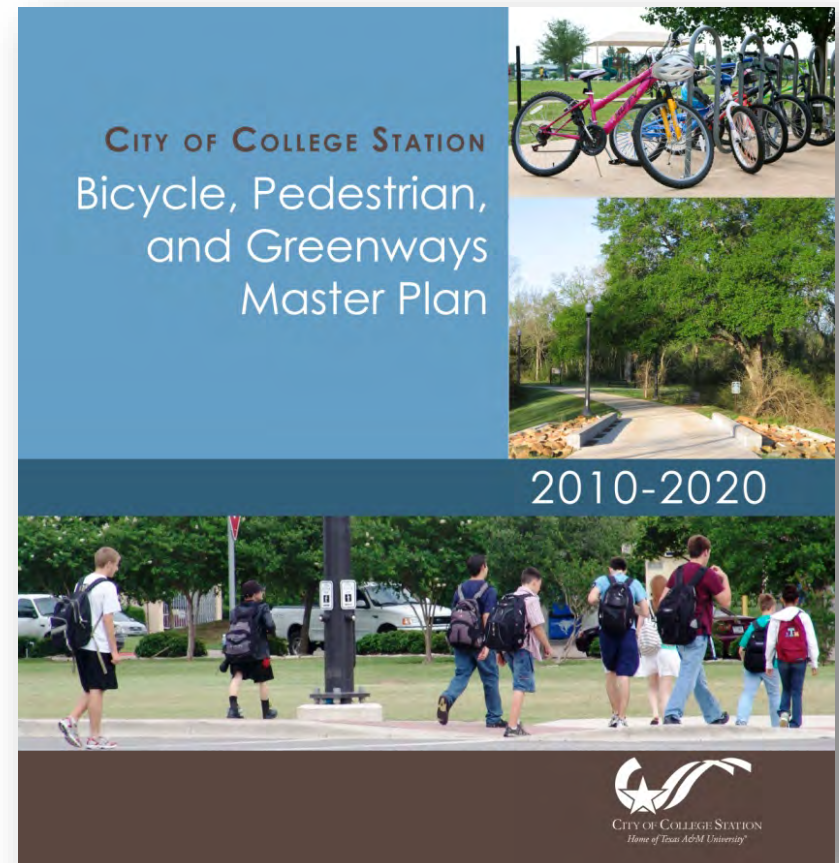
Bicycle, Pedestrian, and Greenways Master Plan Update



Presentation by:
Venessa Garza, AICP
Bicycle, Pedestrian, and Greenways Senior Program Manager

Agenda

- Master Plan Overview
- Progress since adoption
- Next Steps
- Open House



Bicycle, Pedestrian, and Greenways Master Plan

- Adopted in January 2010
- Framework to implement the community's desire for a bikeable, walkable and environmentally aware city
- Previous Plans
 - Sidewalk Master Plan (1994)
 - Greenways Master Plan (1999)
 - Bikeway & Pedestrian Master Plan (2002)



Goals

- Improve Connectivity and Accessibility
- Increase Safety
- Increase Bicycling and Walking Outdoors
- Encourage Environmental Stewardship



Bicycle, Pedestrian, and Greenways Master Plan

- Facilities
 - Biking – Bike lanes and routes
 - Walking – Sidewalks
 - Greenways and trails



Greenways

■ Defined

- Protected linear open spaces
- Corridors
 - Natural – rivers, open space
 - Manmade - utility, railroad

■ Purpose

- Conservation
 - Natural, Historical or Cultural
- Connect People and Places
 - Greenway Trails/Multi-use Paths



Greenway Trails/Multi-use Paths

- A wider sidewalk (10-12) for biking and walking along a creek, utility corridor or road
- Accessible and all-weather for recreation, health and fitness and transportation



- Existing –
 - **17** miles
- Funded –
 - **1** mile
- Proposed –
 - **45** miles

Bike Facilities – Bike Lanes

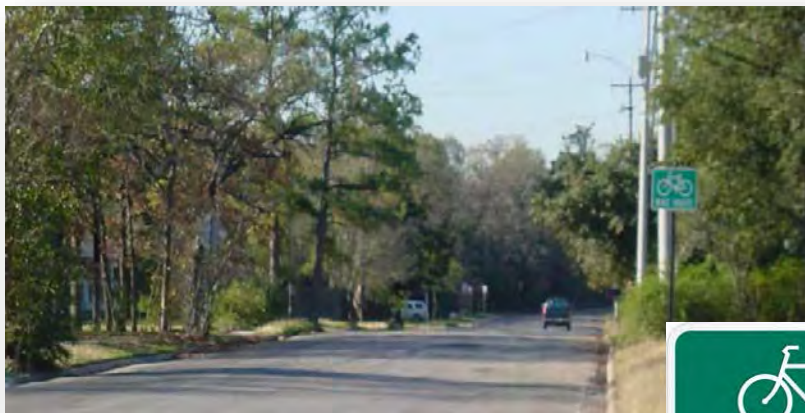
- A designated part of the roadway that is striped, signed, and has pavement markings to be used exclusively by bicycles



- Existing –
 - **48** miles
- Funded –
 - **6** miles
- Proposed –
 - **110** miles

Bike Facilities – Bike Routes

- Roadway shared by both bicyclists and motor vehicles



- Existing –
 - **28** miles
- Proposed –
 - **88** miles

Pedestrian Facilities - Sidewalks

- Walkways alongside roads



- Existing –
 - **185** miles
- Funded –
 - **8** miles
- Proposed –
 - **102** miles

Bicycle, Pedestrian, and Greenways Master Plan

- Study Area
 - City of College Station
 - Extraterritorial Jurisdiction (ETJ) – unincorporated area outside city limits





Biking Facilities

Proposed Biking Facilities

City of College Station

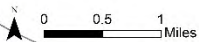
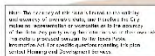
- Existing Proposed
- Bike Lane
 - Bike Route
 - Multi-Use Path
 - Grade Separation

City of Bryan

- Existing Proposed
- Bike Facility
 - Multi-Use Path

- CSISD Schools
- COCs Greenway
- COCs Parks
- CSISD Property
- Parcels
- Texas A&M University
- College Station City Limits
- College Station ETJ
- Bryan City Limits
- Brazos Boundary

Map: This map is for informational purposes only. It is not intended to be used as a legal document. The City of College Station is not responsible for any errors or omissions on this map. The City of College Station is not responsible for any damages or injuries resulting from the use of this map. The City of College Station is not responsible for any damages or injuries resulting from the use of this map.



Bicycle, Pedestrian, and Greenways Master Plan

- What the plan is...
 - Identifies gaps in service – Is a new facility needed?
- What the plan isn't...
 - Doesn't evaluate the condition or level of improvements needed on an existing facility

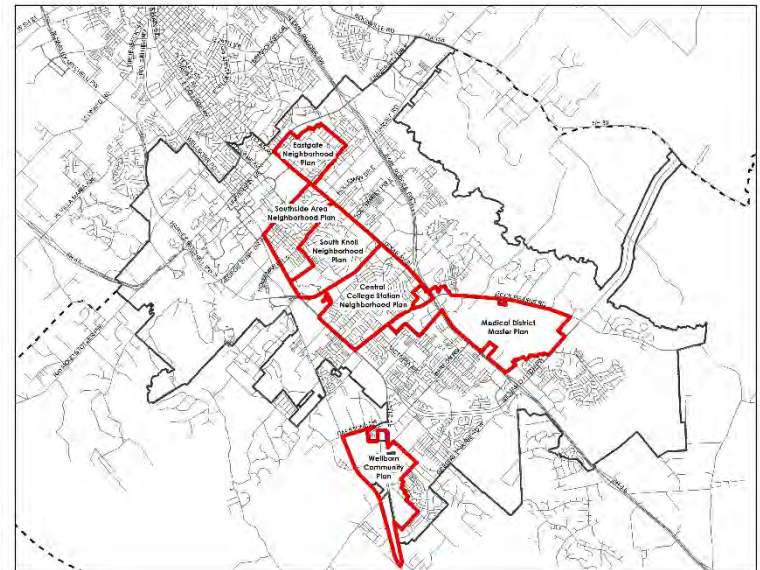
Bicycle, Pedestrian, and Greenways Master Plan

- Planning Horizon
 - 10 years
 - Living document
 - Update as needed
- Why update?
 - College Station continues to grow
 - New areas of growth and change need to be evaluated

Progress since Adoption

Plan Updates

- Comprehensive Plan Amendments
 - Thoroughfare Plan Chapter
- Small Area Plans
 - Central College Station NP (2010)
 - Eastgate NP (2011)
 - Southside Area NP (2012)
 - Medical District MP (2012)
 - Wellborn CP (2013)
 - South Knoll Area NP (2013)



Bicycle, Pedestrian, and Greenways Advisory Board

- 7 members appointed by City Council
- Help implement the Master Plan
- Role includes recommendations on
 - Comprehensive Plan Amendments
 - Text Amendments to our regulations
 - Project Priorities

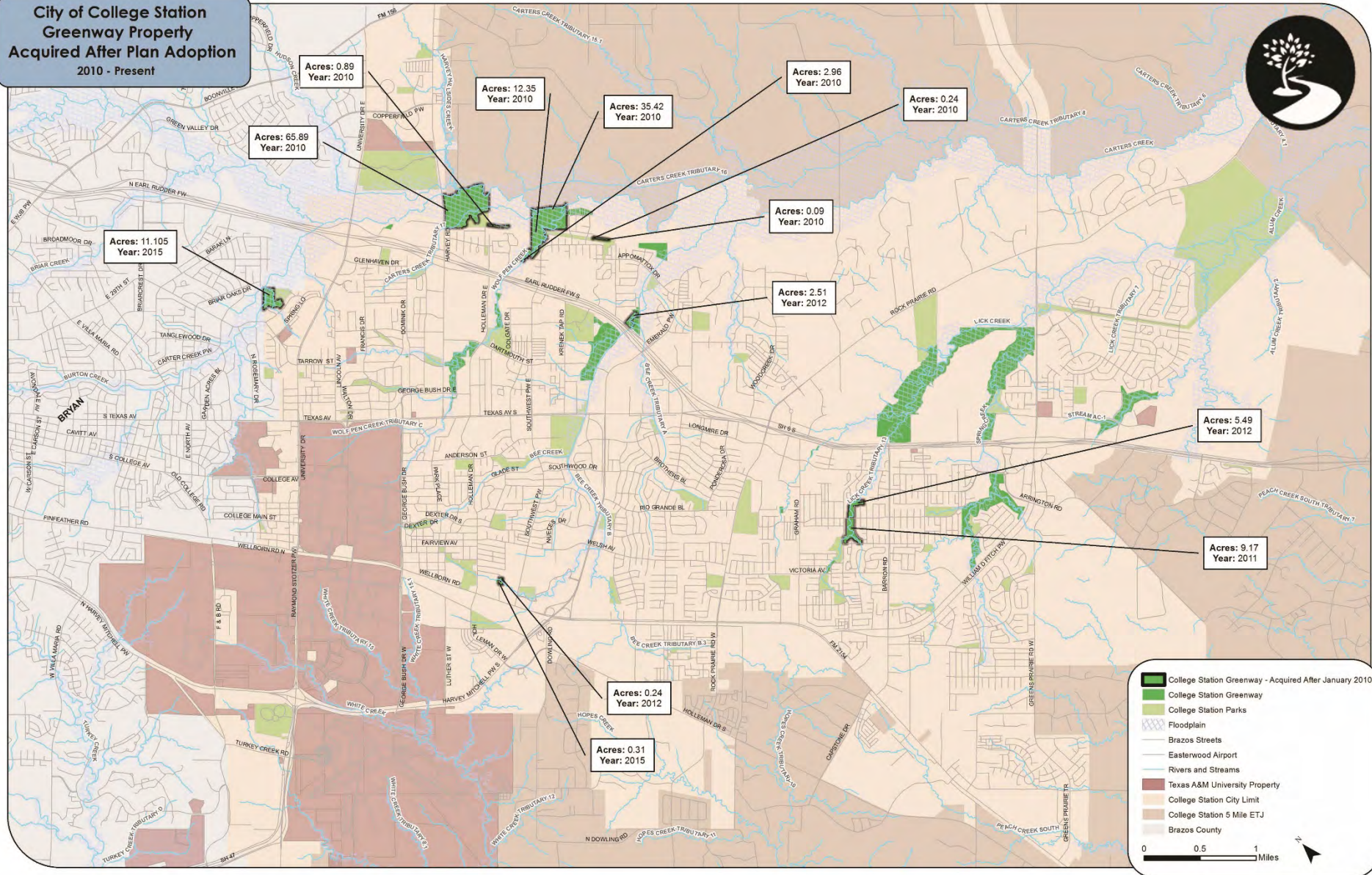
Coordination

- Metropolitan Planning Organization (MPO)
Active Transportation Advisory Panel (ATAP)
 - Regional connectivity
 - City of College Station, City of Bryan, Texas A&M University, Brazos County, Texas Department of Transportation, Texas Transportation Institute, Citizen representatives, among others
 - Funding policy – 5% minimum to bike/ped only projects

Projects

Greenway Property

City of College Station
Greenway Property
Acquired After Plan Adoption
2010 - Present



Greenway Property

City of College Station
Greenway Property
Acquired After Plan Adoption
2010 - Present



Acres: 65.89
Year: 2010

Acres: 0.89
Year: 2010

Acres: 12.35
Year: 2010

Acres: 35.42
Year: 2010

Acres: 2.96
Year: 2010

Acres: 0.24
Year: 2010

Acres: 0.09
Year: 2010

Acres: 2.51
Year: 2012

Acres: 11.105
Year: 2015

Since Adoption: 146 acres
Total: 650 acres

Acres: 5.49
Year: 2012

Acres: 9.17
Year: 2011

Acres: 0.24
Year: 2012

Acres: 0.31
Year: 2015

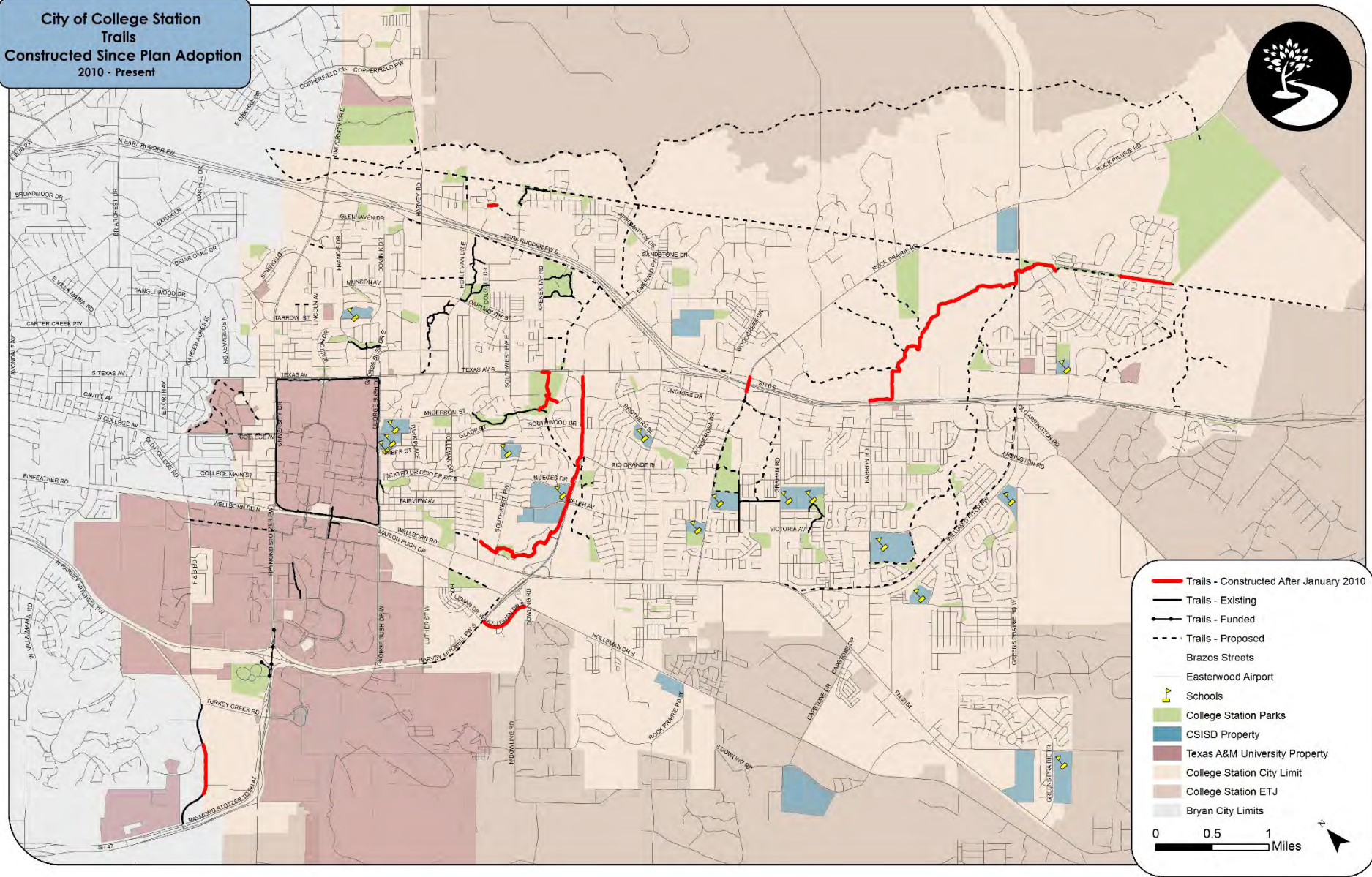
- College Station Greenway - Acquired After January 2010
- College Station Greenway
- College Station Parks
- Floodplain
- Brazos Streets
- Easterwood Airport
- Rivers and Streams
- Texas A&M University Property
- College Station City Limit
- College Station 5 Mile ETJ
- Brazos County

0 0.5 1 Miles

Greenway Trails



City of College Station
Trails
Constructed Since Plan Adoption
2010 - Present

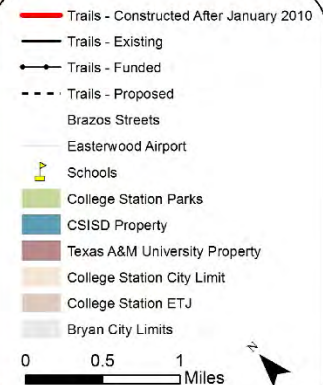


Greenway Trails

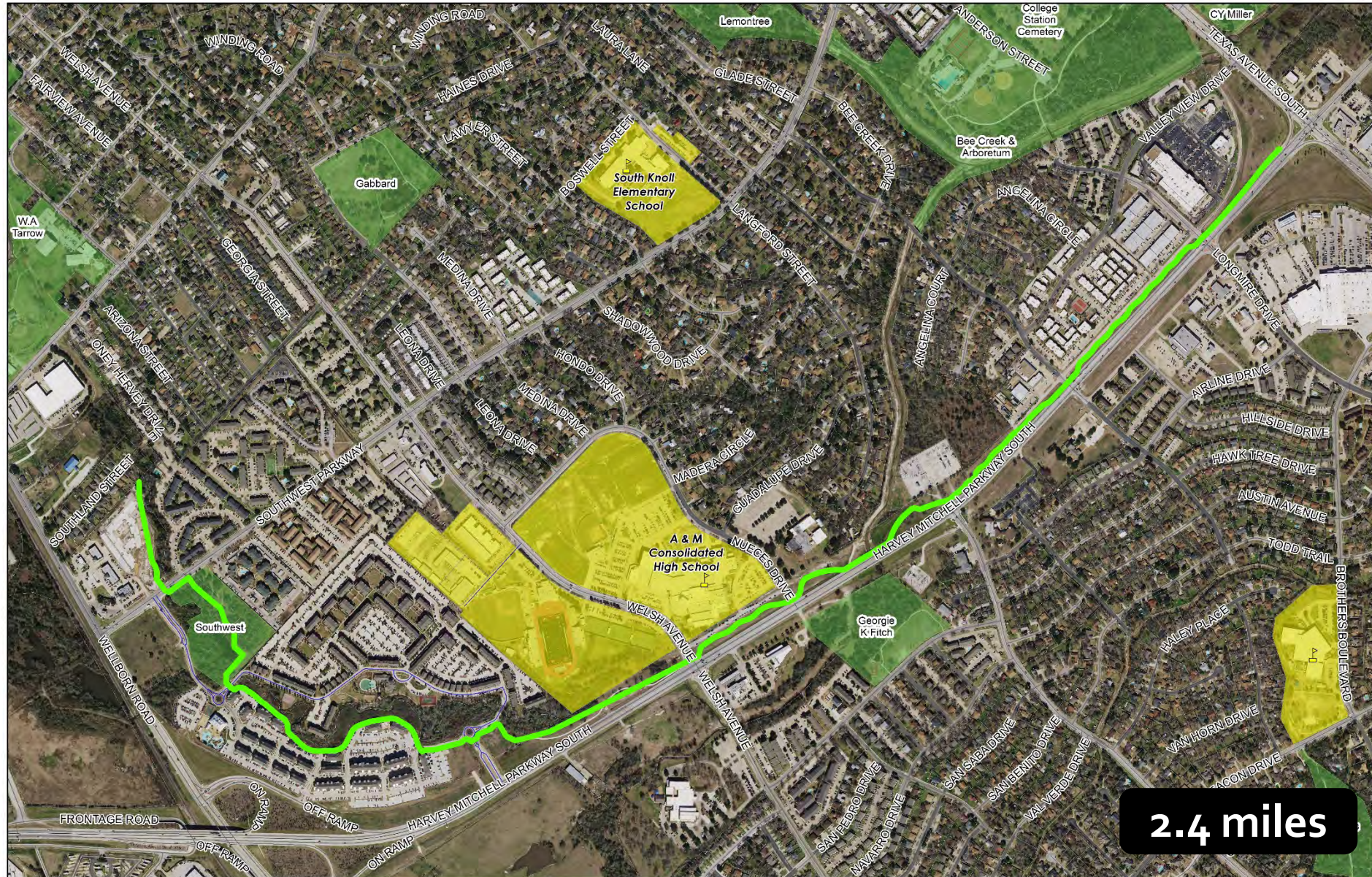


City of College Station
Trails
Constructed Since Plan Adoption
2010 - Present

Since Adoption: 9.5 miles
Total: 17.5 miles



FM 2818/Bee Creek Trail

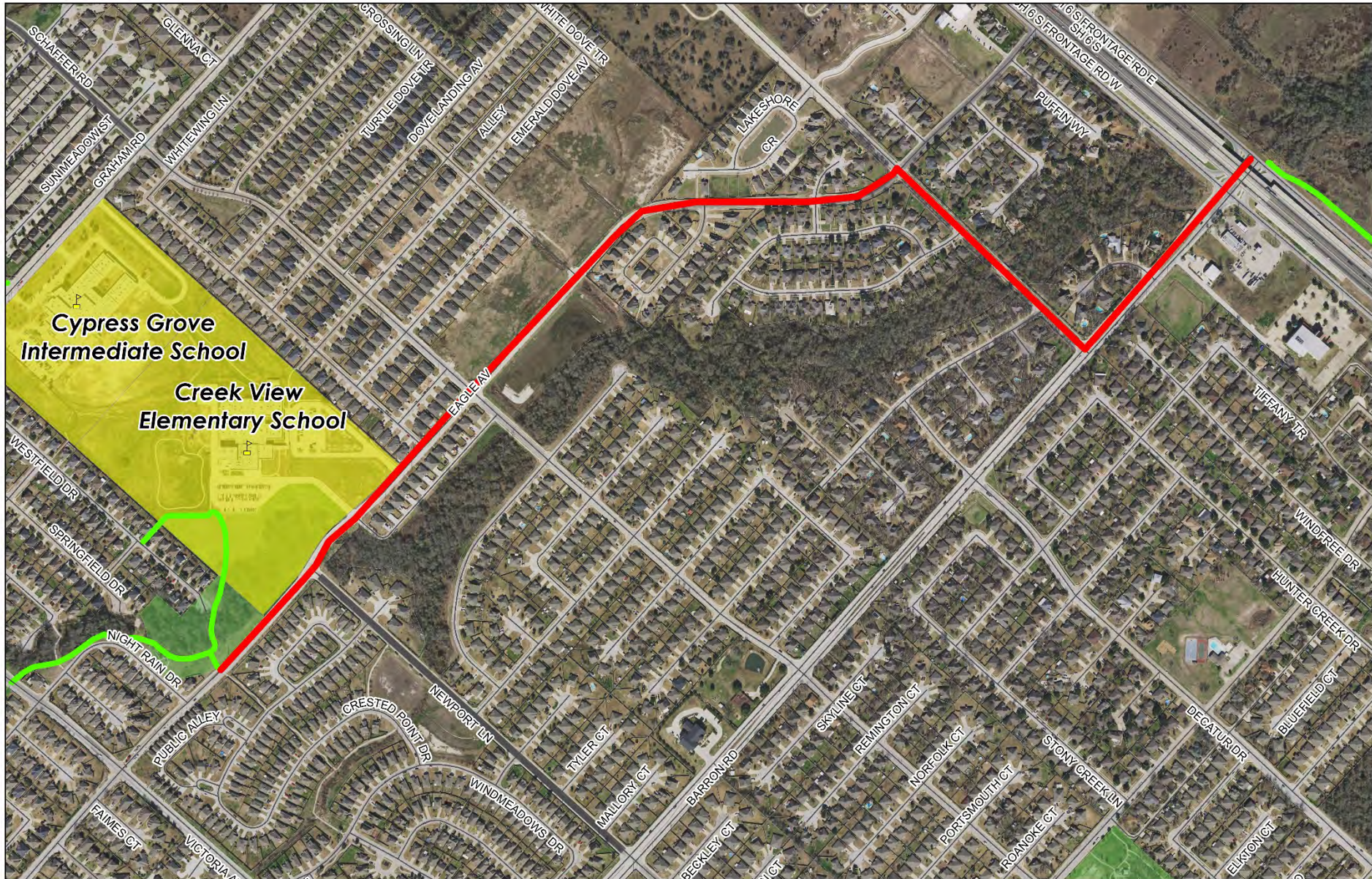


FM 2818/Bee Creek Trail



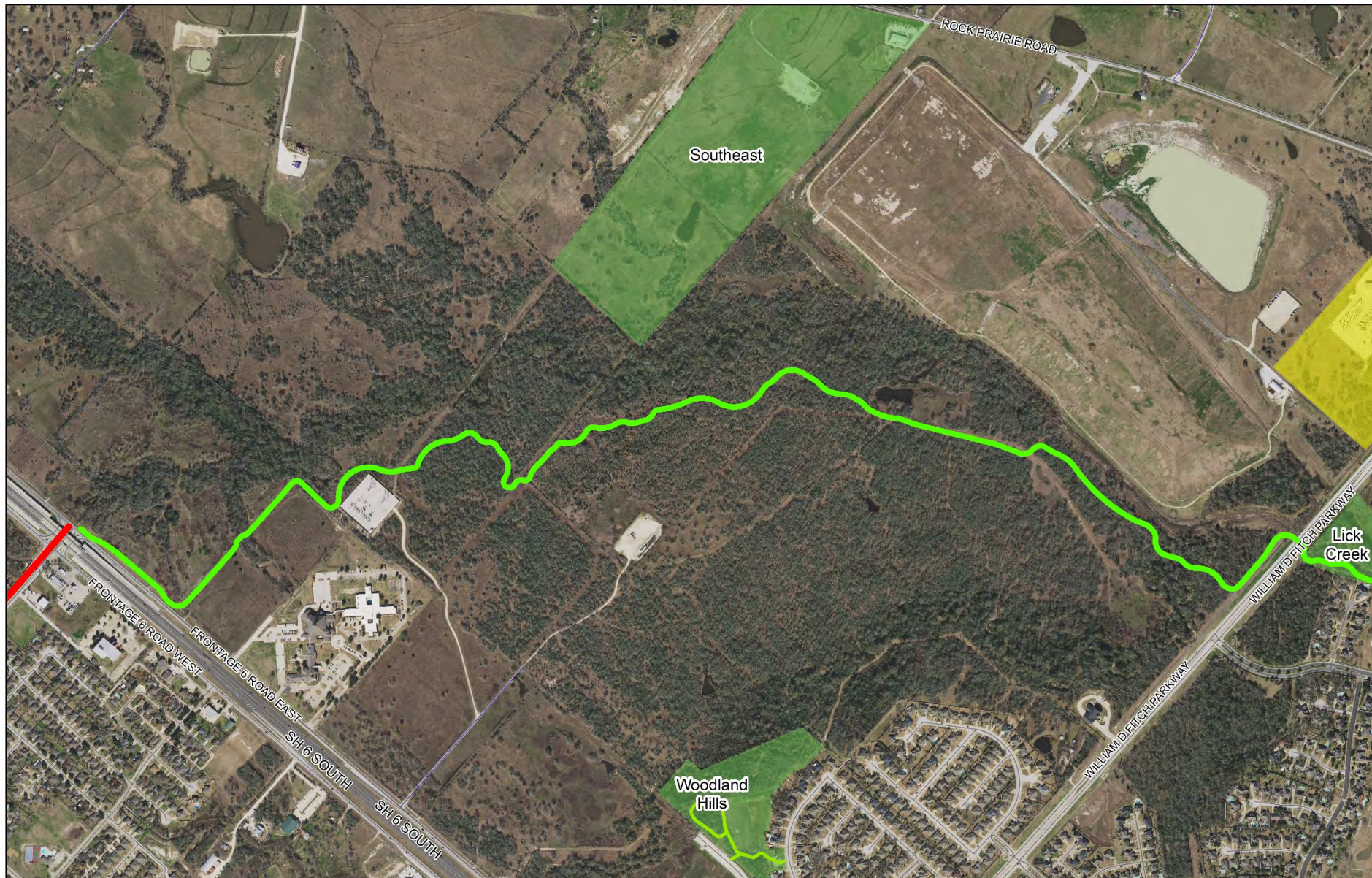


Lick Creek Trail



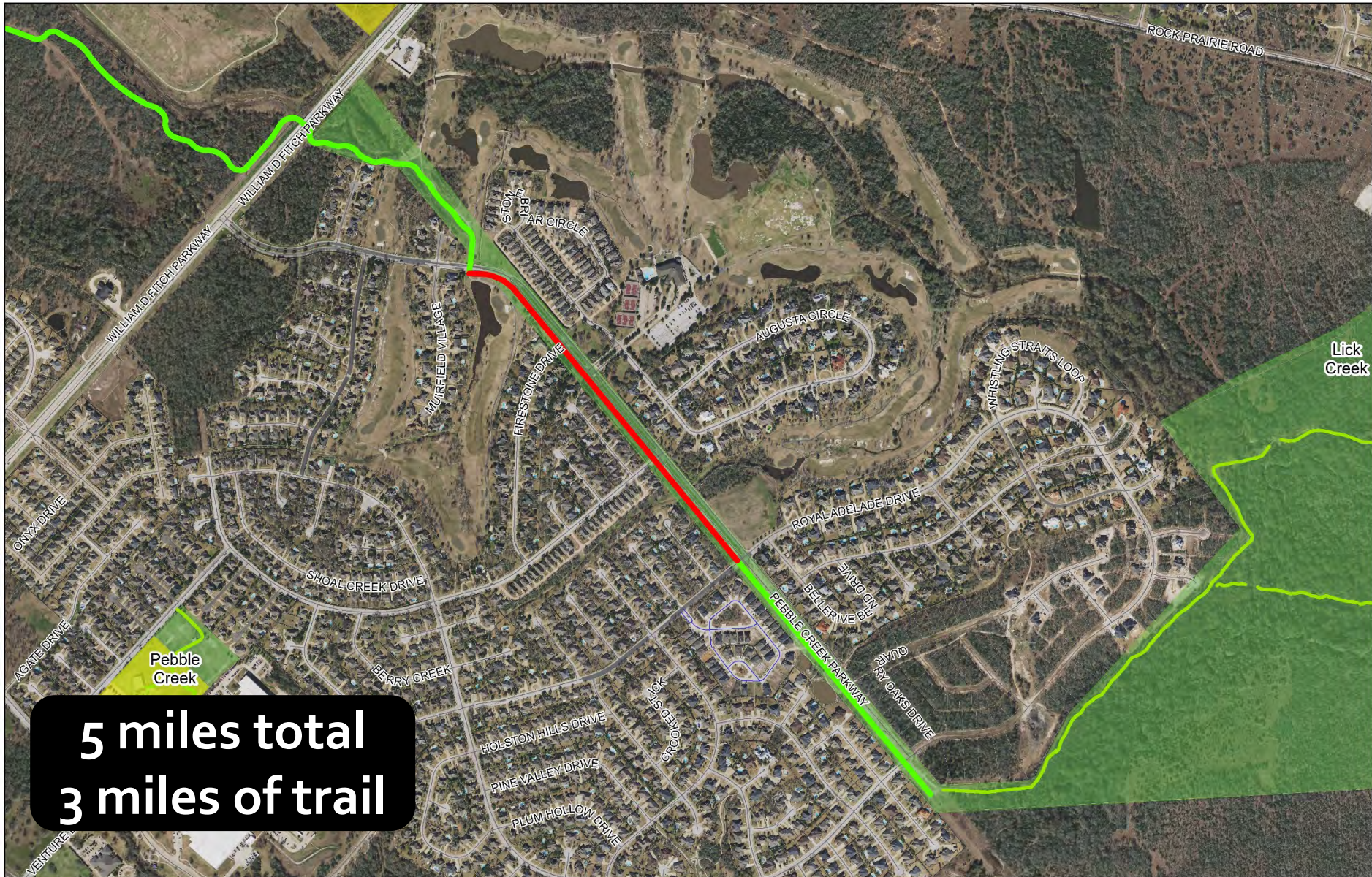


Lick Creek Trail





Lick Creek Trail



5 miles total
3 miles of trail



Lick Creek Trail



SH 6 Frontage Rd & Barron Rd





Lick Creek Trail

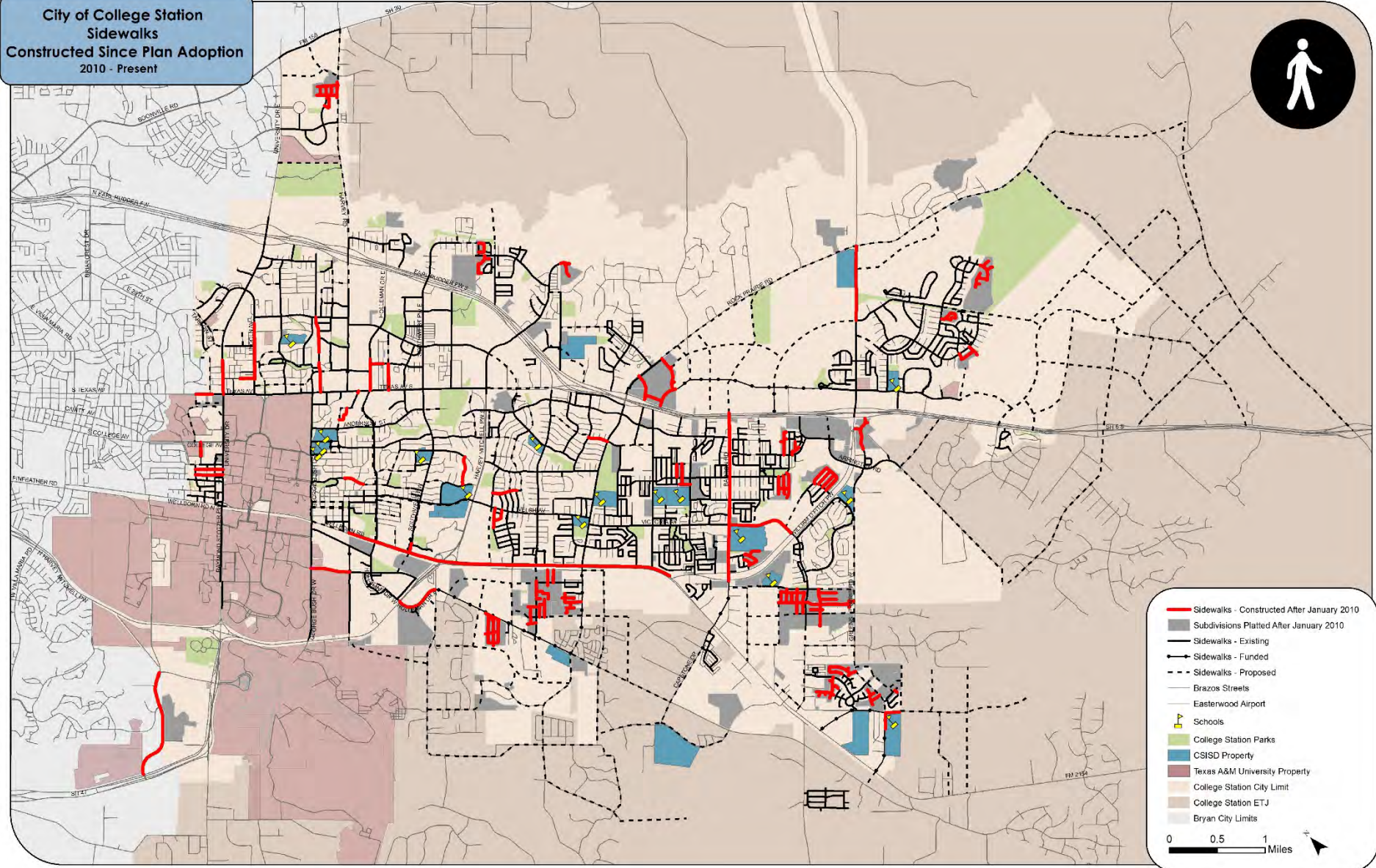


Under William D. Fitch Parkway

Sidewalks



City of College Station
Sidewalks
Constructed Since Plan Adoption
2010 - Present



- Sidewalks - Constructed After January 2010
 - Subdivisions Platted After January 2010
 - Sidewalks - Existing
 - Sidewalks - Funded
 - Sidewalks - Proposed
 - Brazos Streets
 - Eastwood Airport
 - Schools
 - College Station Parks
 - CSISD Property
 - Texas A&M University Property
 - College Station City Limit
 - College Station ETJ
 - Bryan City Limits
- 0 0.5 1 Miles

Sidewalks

City of College Station
Sidewalks
Constructed Since Plan Adoption
2010 - Present



Since Adoption: 55 miles
Total: 185 miles

- Sidewalks - Constructed After January 2010
- Subdivisions Platted After January 2010
- Sidewalks - Existing
- Sidewalks - Funded
- - - Sidewalks - Proposed
- Brazos Streets
- Easternwood Airport
- ▲ Schools
- College Station Parks
- CSISD Property
- Texas A&M University Property
- College Station City Limit
- College Station ETJ
- Bryan City Limits

0 0.5 1 Miles

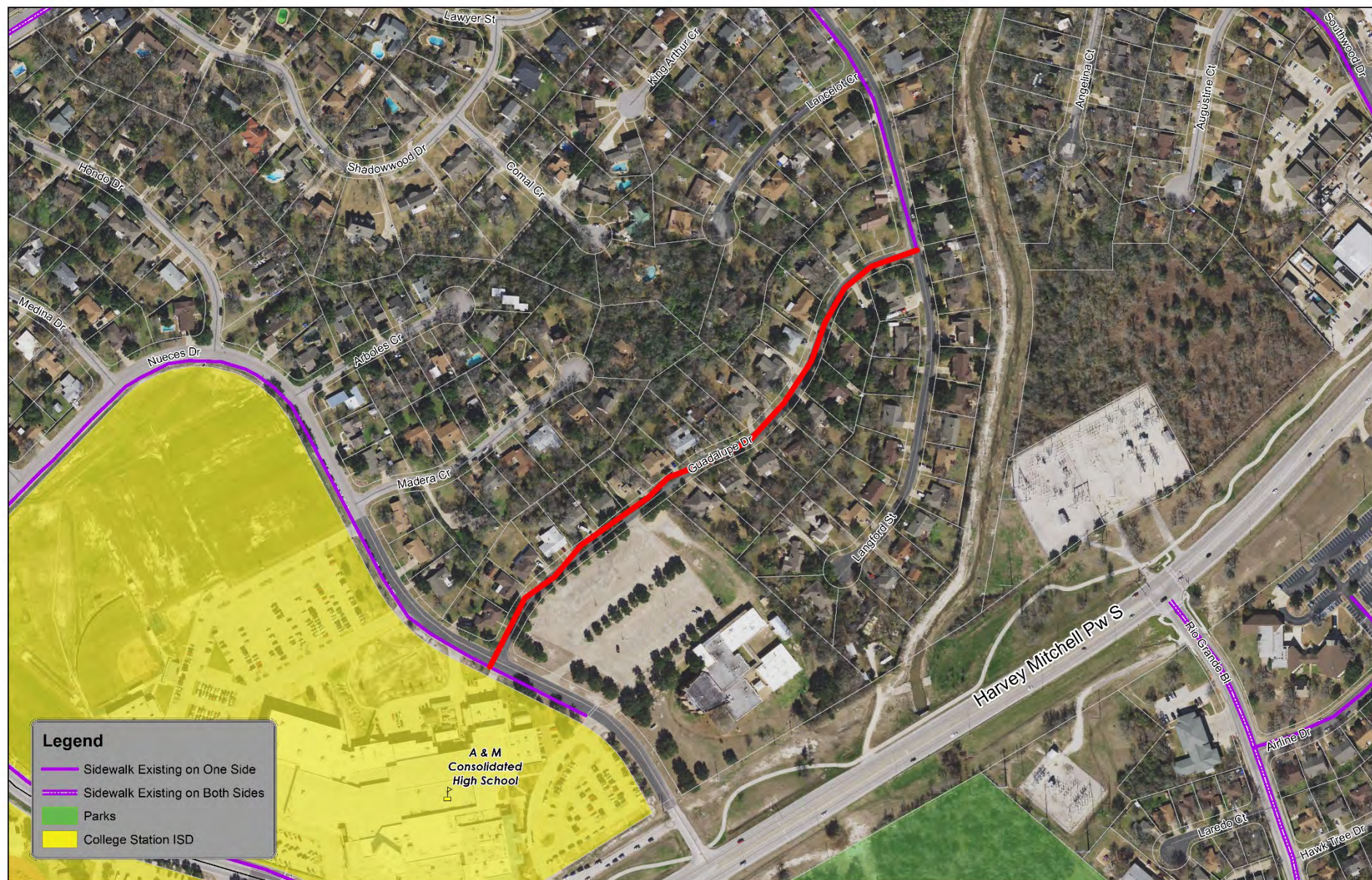
Wellborn Road



Wellborn Road



Guadalupe Drive

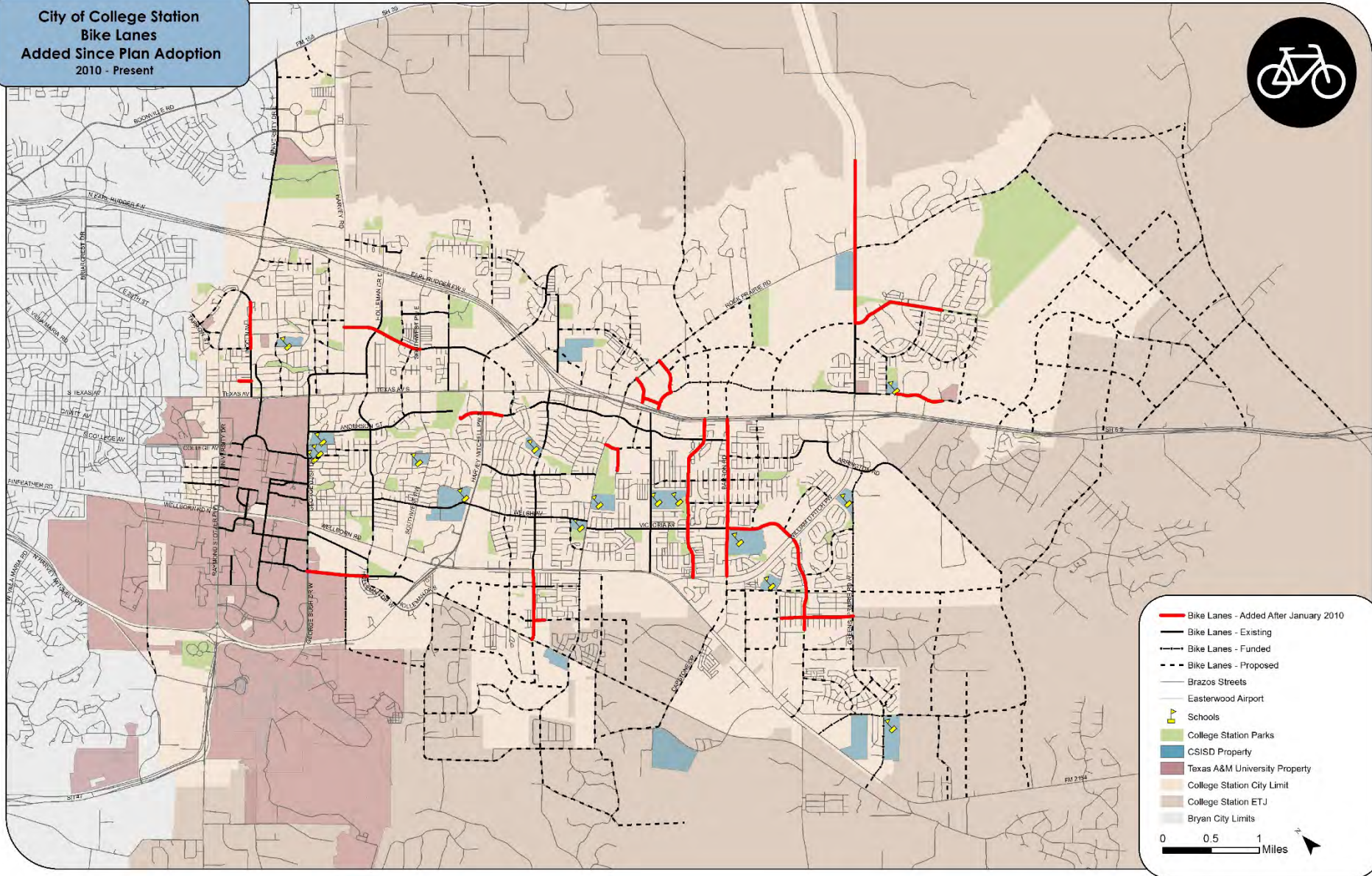


Guadalupe Drive



Bike Lanes

City of College Station
Bike Lanes
Added Since Plan Adoption
2010 - Present



Bike Lanes

City of College Station
Bike Lanes
Added Since Plan Adoption
2010 - Present

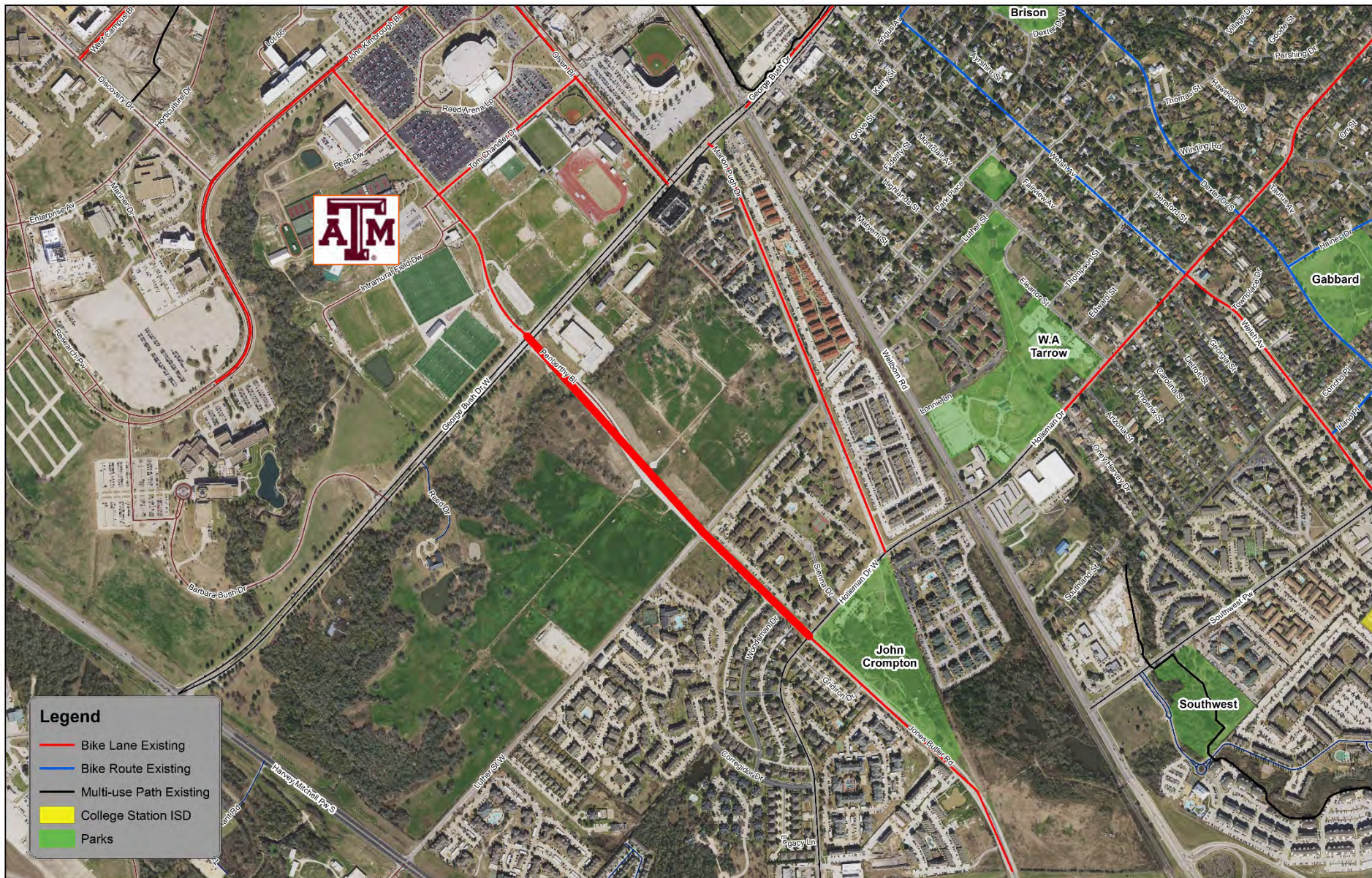


Since Adoption: 13.5 miles
Total: 48 miles

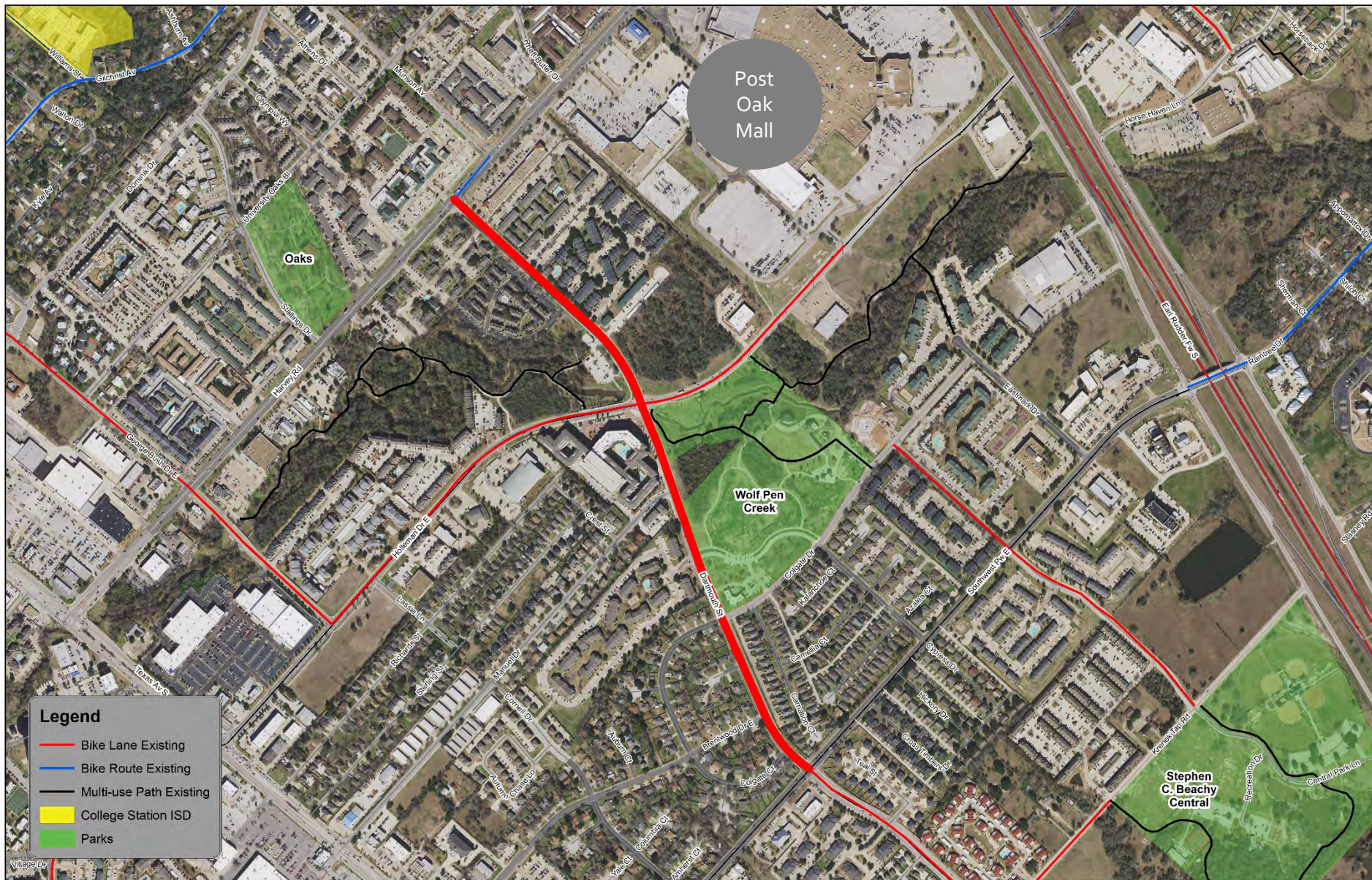
- Bike Lanes - Added After January 2010
- Bike Lanes - Existing
- Bike Lanes - Funded
- - - Bike Lanes - Proposed
- Brazos Streets
- Easterwood Airport
- ▲ Schools
- College Station Parks
- CSISD Property
- Texas A&M University Property
- College Station City Limit
- College Station ETJ
- Bryan City Limits

0 0.5 1 Miles

Jones Butler/Penberthy



Dartmouth Street



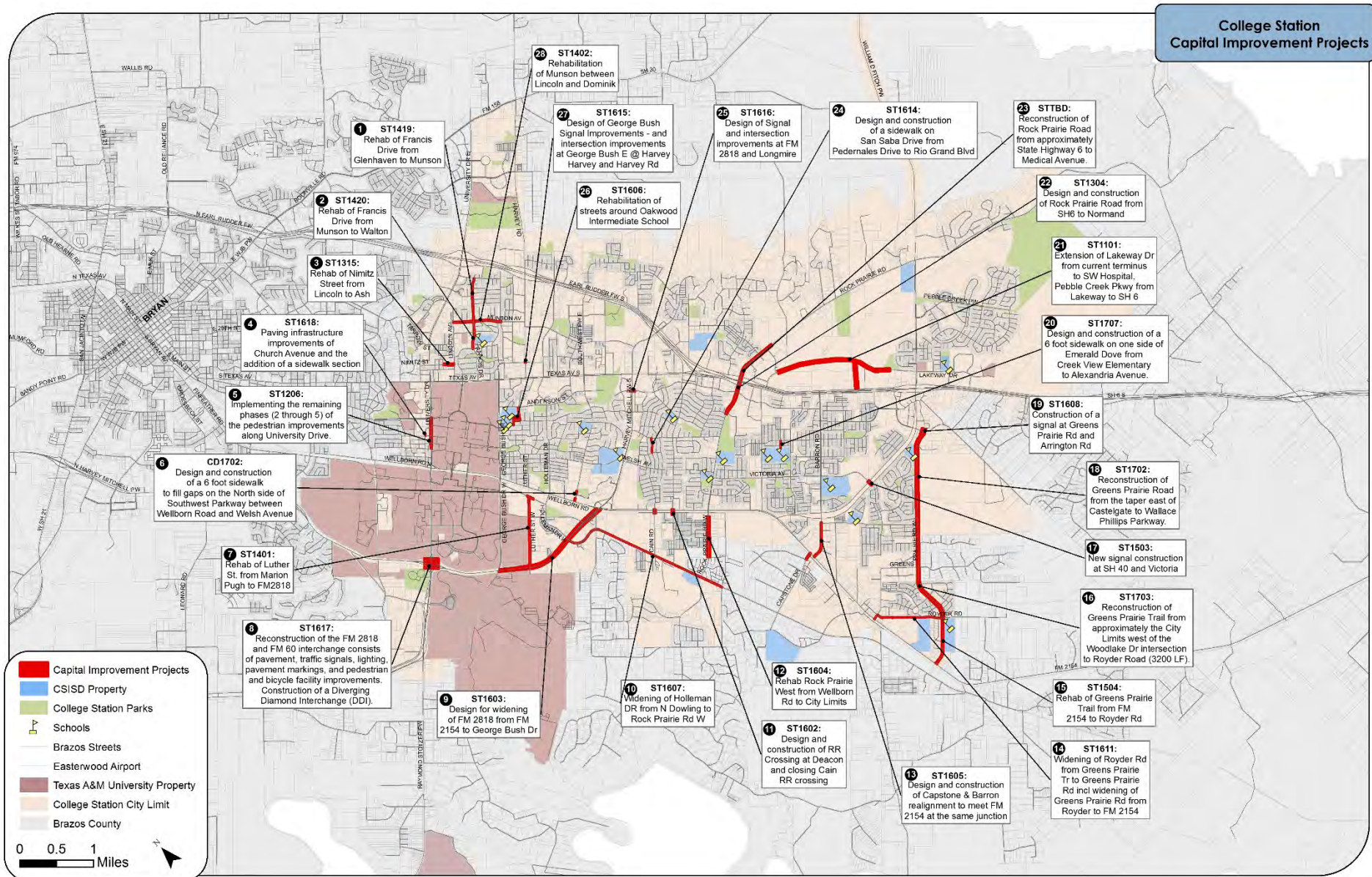
Buffered Bike Lanes

- A bike lane with painted buffer space that provides greater separation between bicyclists and motorists



Pebble Creek Parkway

Projects in Design or Construction



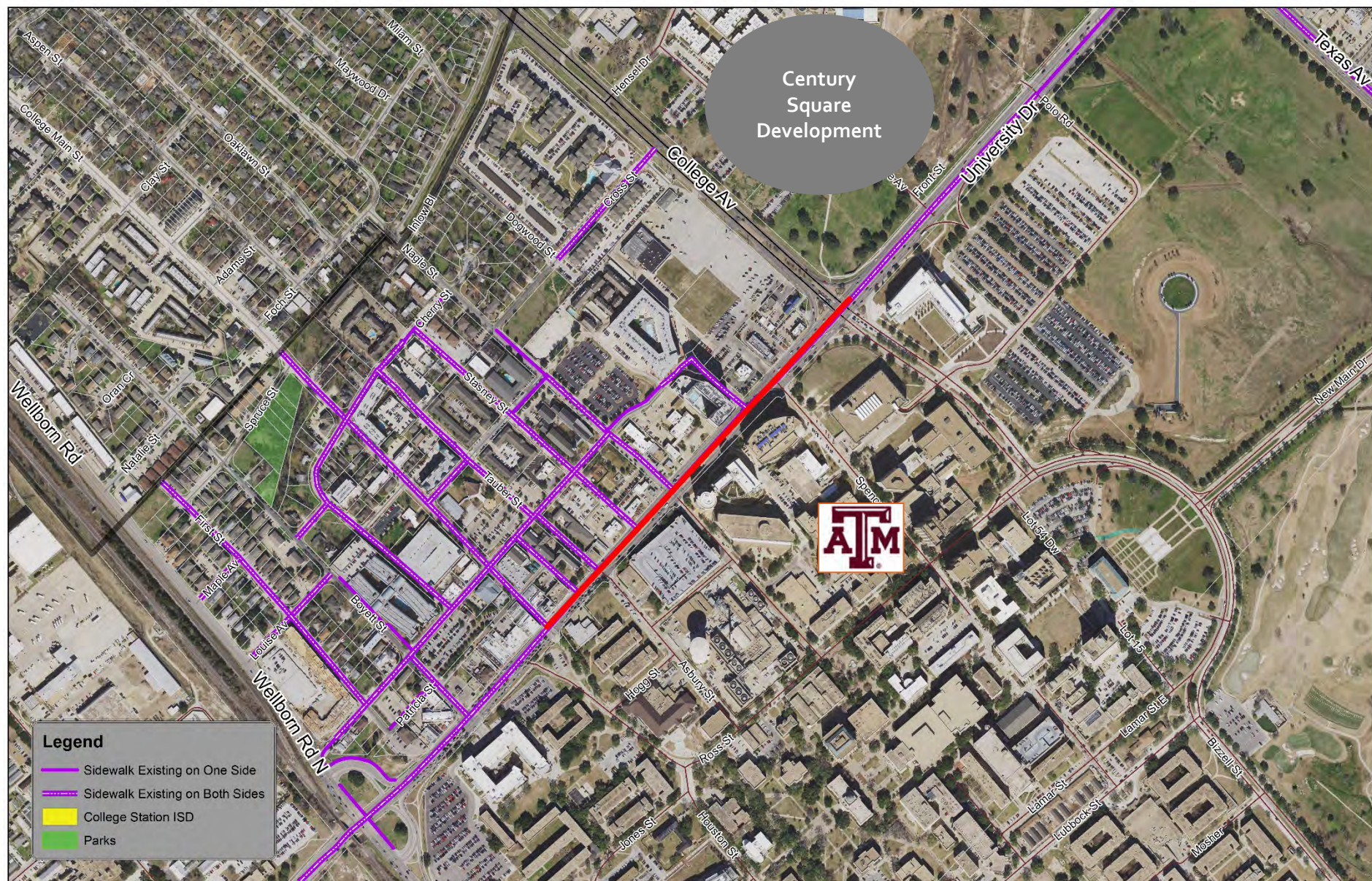
Southside Safety Improvements



Legend

- Sidewalk Existing on One Side
- Sidewalk Existing on Both Sides
- College Station ISD
- Parks

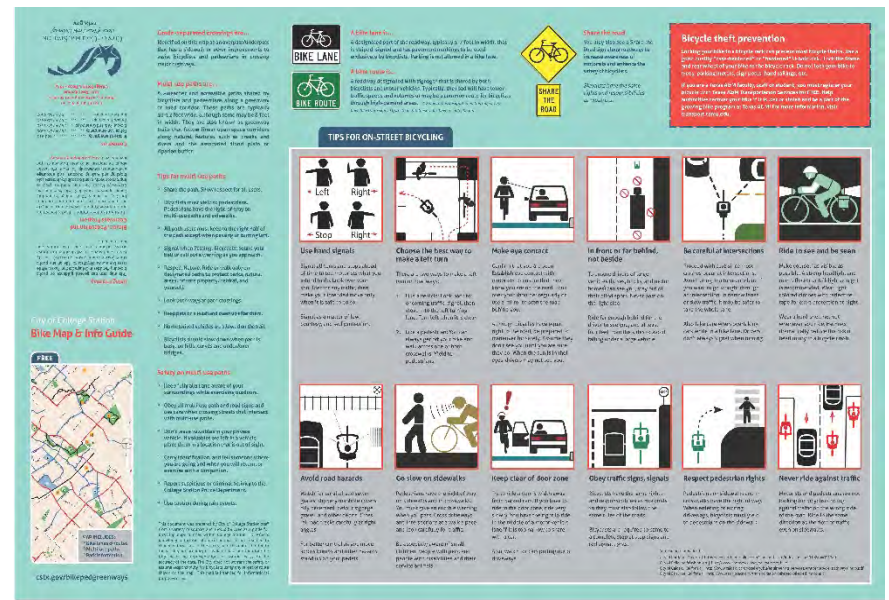
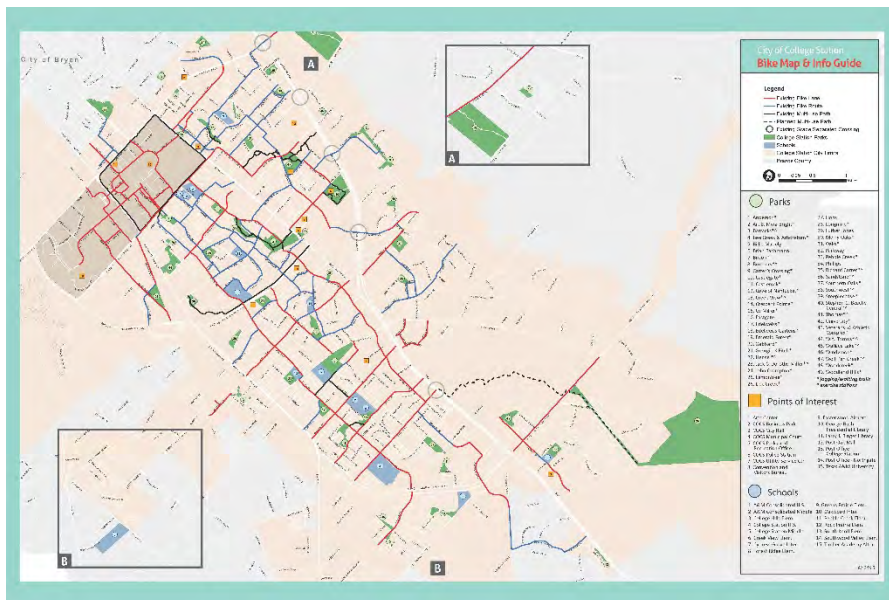
University Drive Safety Improvements



Programs

FREE Bike Maps

- Paper and web versions
- Bicycle facilities, Parks and Schools
- Safety tips



FREE Bike Classes

- For Adults
- For Children



FREE BIKE CLASSES

Ages 14+ are invited to learn how to ride safely and legally in traffic or on the trail. Class is 9 a.m.-12 p.m. Choose one of the following dates:

MARCH 4
APRIL 1
MAY 6

Reserve your spot today:
CSTX.GOV/BIKEPEDGREENWAYS
979.764.3674



Adopt-a-Greenway Program

- To clean our greenways and parks
- 2 year commitment
- Currently -18 Organizations participating
- Since 2012...
 - 841 volunteers
 - 1500 volunteer hours
 - 5 tons of litter



Next Steps

Next Steps

- Public Input – Tonight and Online
- Bicycle, Pedestrian, and Greenways Advisory Board
 - Recommended Changes
 - Summer – Comment Period online
 - Public Hearing
- Planning and Zoning Commission
- City Council

Next Steps

- Visit our website : cstx.gov/bikepedgreenways
- Online Survey: February 7th – March 7th

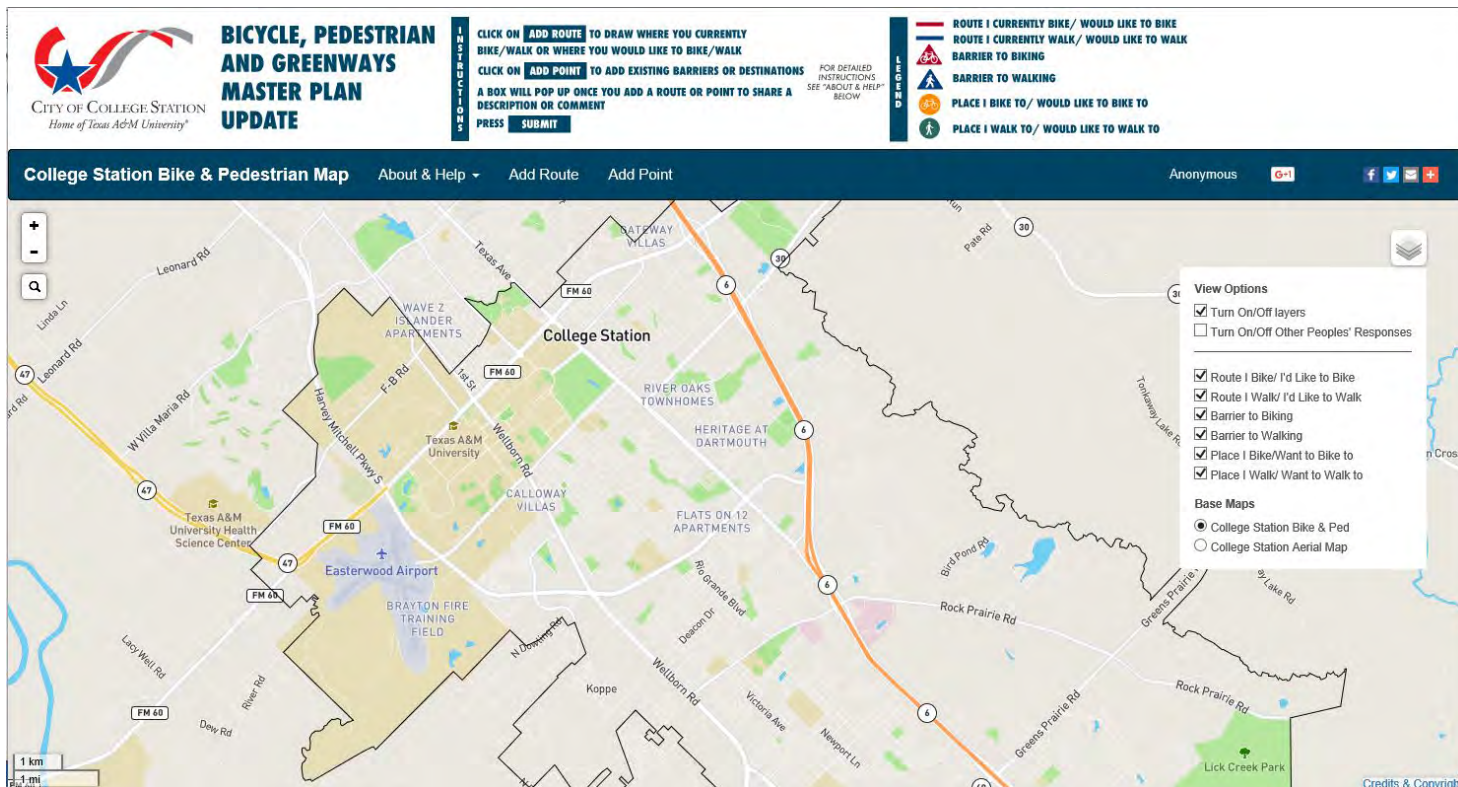
Survey – cstx.gov/bikepedgreenways

■ Survey Questions

■ [Link](#)

■ Map Input

■ [Link](#)



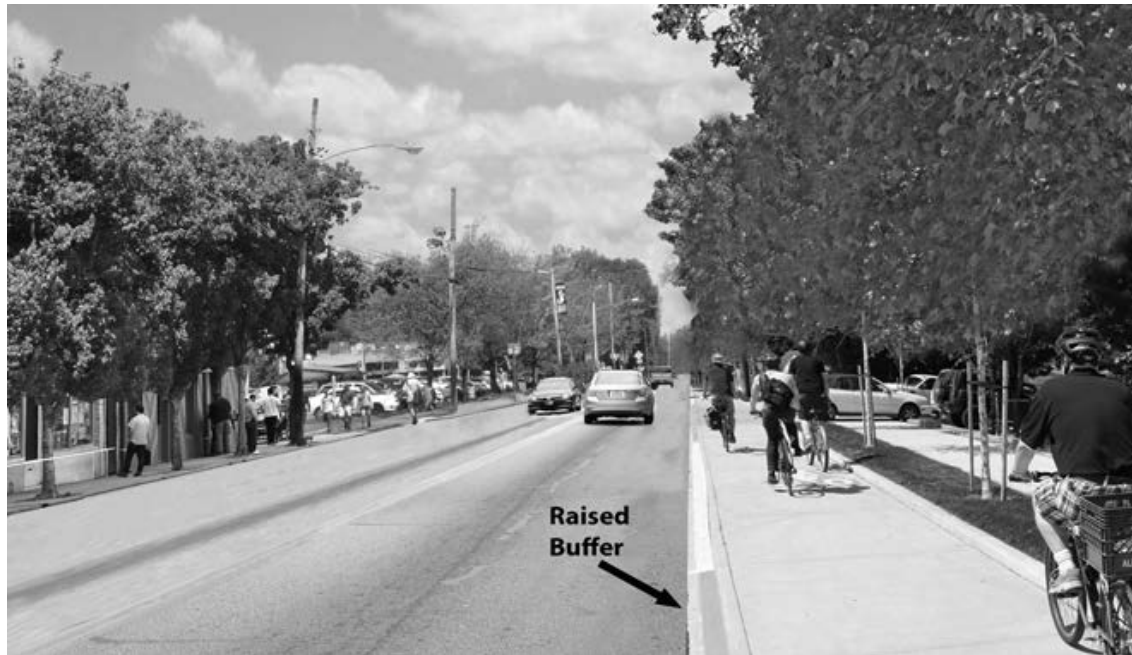
Separated Bike Lanes

- Safety and comfort
- Physical Separation from motor vehicle traffic with a vertical element
 - Raised median
 - Plastic posts
 - Large bumps



Separated Bike Lanes

- Raised Bike Lane
- Elevated above the street level with a mountable curb or flush with the sidewalk



Open House

Open House

- Staff available for comments and questions
 - Walking
 - Biking
 - Greenways and Trails
- Additional info
 - Giveaways
 - Where do you live? MAP
 - Provide email address to receive future notifications