



CITY OF COLLEGE STATION
Home of Texas A&M University®

FACILITY DESIGN GUIDELINES



JUNE 2023



CITY OF COLLEGE STATION
Home of Texas A&M University®

FACILITY DESIGN GUIDELINES

TABLE OF CONTENTS

INTRODUCTION

Applicability	3
Purpose & Intent	3
Overall Design Aesthetic	3
Waiver to the Standards	3

EXISTING FACILITY IMAGES

City Hall	4
City Gateway Sign	4
Police Headquarters	5
Larry J. Ringer Library	6
Beachy Central Park Fun for All Playground	6
Beachy Central Park Facilities	7-8
Lick Creek Park	9-10
Veterans Park	11
Forestry and Facilities Maintenance Shops	12
Field of Honor	13

EXTERIOR FACADE

Brick	14
Limestone	14
Cast Stone	14
Metal R-Panel	14
Roofing	15
Signage & Fonts	16
Flagpoles	16

ROADWAY MEDIANS

Median Pavers	17
Raised Planter Beds	18



CITY OF COLLEGE STATION
Home of Texas A&M University®

FACILITY DESIGN GUIDELINES

INTRODUCTION

APPLICABILITY

The following design guidelines shall be used in the design development of all City of College Station facilities.

PURPOSE & INTENT

The purpose of the City of College Station Facility Design Guidelines is to establish and provide design guidelines for all City of College Station Facilities as directed by City Council and the Architectural Advisory Committee.

The design intent of municipal facilities is to have a consistent design scheme and appearance across city facilities and be recognizable as a City of College Station facility. Each facility design and components will vary based on site, usage, and existing neighboring facilities and city facilities.

OVERALL DESIGN AESTHETIC

City of College Station facilities shall have a "Traditional Texas Municipal Architectural" style that stands the test of time with elements such as a pitched roof, arches, and/or columns. However, each facility design and components will vary based on site, usage, and existing neighboring facilities and city facilities.

Event or community gathering areas are to look and feel purposeful with items such as paved areas for gathering, seating, and inviting landscaping.

WAIVER TO THE STANDARDS

The Architectural Advisory Committee and/or City Council may approve a waiver to the standards if the materials and design are shown to be equal to or superior to the requirements stated herein.



CITY OF COLLEGE STATION
Home of Texas A&M University®

FACILITY DESIGN GUIDELINES

CITY HALL & GATEWAY SIGN





CITY OF COLLEGE STATION
Home of Texas A&M University®

FACILITY DESIGN GUIDELINES

POLICE HEADQUARTERS





CITY OF COLLEGE STATION
Home of Texas A&M University®

FACILITY DESIGN GUIDELINES

RINGER LIBRARY & FUN FOR ALL PLAYGROUND



FUN FOR ALL PLAYGROUND



CITY OF COLLEGE STATION
Home of Texas A&M University®

FACILITY DESIGN GUIDELINES

BEACHY CENTRAL PARK



PAVILION



RESTROOM



SHOP



CITY OF COLLEGE STATION
Home of Texas A&M University®

FACILITY DESIGN GUIDELINES

BEACHY CENTRAL PARK



PARKS HEADQUARTERS



SOFTBALL CONCESSION & RESTROOM



CITY OF COLLEGE STATION
*Home of Texas A&M University**

FACILITY DESIGN GUIDELINES

LICK CREEK PARK



ENTRY SIGNAGE



HALTER NATURE CENTER



OUTDOOR CLASSROOM



CITY OF COLLEGE STATION
Home of Texas A&M University®

FACILITY DESIGN GUIDELINES

LICK CREEK PARK



AMPHITHEATER



TRAILHEAD



CITY OF COLLEGE STATION
Home of Texas A&M University®

FACILITY DESIGN GUIDELINES

VETERANS PARK



AMERICAN PAVILION



RESTROOM



PAVILION



SHOP



CITY OF COLLEGE STATION
Home of Texas A&M University®

FACILITY DESIGN GUIDELINES

SHOP BUILDINGS



FORESTRY SHOP



FACILITIES MAINTENANCE



CITY OF COLLEGE STATION
Home of Texas A&M University®

FACILITY DESIGN GUIDELINES

FIELD OF HONOR



INFORMATION CENTER



COMMUNAL SHELTER



CEMETERY SHOP





CITY OF COLLEGE STATION
*Home of Texas A&M University**

FACILITY DESIGN GUIDELINES

EXTERIOR FAÇADE

EXTERIOR FAÇADE

BRICK- RED BRICK BLEND SIMILAR TO:

- Sioux City Brick Modular Napa Valley Velour Texture (City Hall)
- Acme Burgundy DTP137 Modular (Police Department & City Gateway Sign)
- Acme Burgundy DTP137 Modular Heritage Texture (Ringer Library)
- Upchurch Kimbrough Cranberry Thin Set Masonry Veneer (1207 Texas Avenue)



Acme Burgundy DTP137
Modular Heritage Texture



Sioux City Brick Modular Napa Valley
Velour Texture



LIMESTONE SIMILAR TO:

- Continental Quarries Split & Smooth Faced, Leuders Color (Police Department)

CAST STONE SIMILAR TO:

- Siteworks Inc. Rock Faced & Smooth Cast Stone (varying size), Cream Color (City Gateway Sign)
- Smooth Faced Cast Stone Trim (varying size), Creme Color (Police Department)
- Arriscraft International Non-Sealed Smooth & Rough Thin Set Stone Veneer, Champagne Color (City Hall & 1207 Texas Avenue)

METAL R-PANEL SIMILAR TO:

- Alliance MFR Charcoal Grey Color (Police Department Annex)



CITY OF COLLEGE STATION
Home of Texas A&M University®

FACILITY DESIGN GUIDELINES

ROOFING

ROOFING

PITCHED ROOF WITH STANDING SEAM METAL ROOF SIMILAR TO:

LARRY J. RINGER LIBRARY ADDITION

Existing Standing Seam Metal Roof

POLICE DEPARTMENT

Standing Seam Metal Roof (Berridge or Similar), Zinc Grey Pre-Finished Metal Roof Style

CITY HALL

Standing Seam Metal Roof (Sentria, SRS-3 18" Width) in Silversmith & Bronze II Colors



CITY OF COLLEGE STATION
Home of Texas A&M University®

FACILITY DESIGN GUIDELINES

SIGNAGE & FONTS FLAGPOLES

SIGNAGE & FONTS

UTILIZE COLOR CONTRAST & LEGIBLE TEXT

CITY GATEWAY SIGNS

Stars and Letters Recessed into Stone and Painted Black

Font: Times New Roman & Times New Roman Italic



LARRY J. RINGER LIBRARY ADDITION

Pin-mounted Cast Aluminum Black Anodized Dimensional Letters

Font: Times New Roman Font



CITY HALL

8" Thick Internal Illuminated Channel Letters, Front Face Painted Off-White with Off-White Acrylic
Font: Monotype Garamond Std. Roman



POLICE DEPARTMENT

Stud-mounted Cast Aluminum Black Anodized Dimensional Letters

Font: Arial



FLAGPOLES

Flagpoles should be included on public facing buildings depending on context. Size, number, and placement will vary based on the building and site design.



CITY OF COLLEGE STATION
Home of Texas A&M University®

FACILITY DESIGN GUIDELINES

ROADWAY MEDIANS

MEDIAN STAMPED CONCRETE

4" thick raised colored (Butterfield, Integral – Base: U34 Brick Red, Release: R13 Deep Charcoal) and stamped (New Brick Running Bond) concrete with sub-base, or approved equal.



ROCK PRAIRIE ROAD WEST



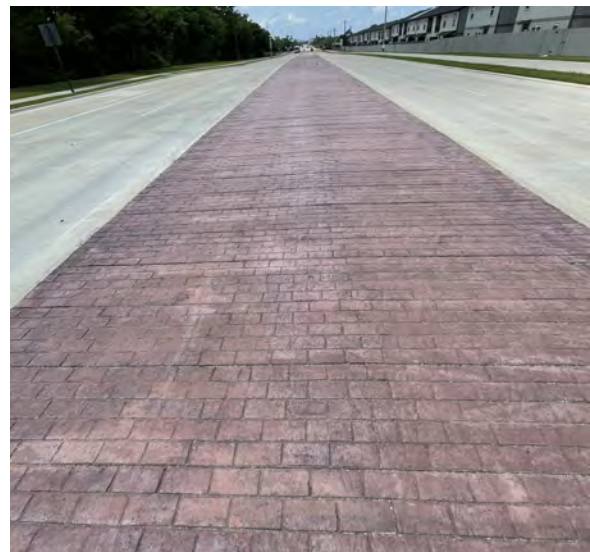
ARRINGTON ROAD



GREENS PRAIRIE ROAD



ROYDER ROAD



HOLLEMAN DRIVE SOUTH



CITY OF COLLEGE STATION
Home of Texas A&M University®

FACILITY DESIGN GUIDELINES

ROADWAY MEDIANS

RAISED PLANTER BED



GREENS PRAIRIE ROAD

