

Overall Parade Staging Layout Plan

Notes:

1. Participants drop off traffic shall enter off HWY 6 Feeder Road and drop off participants in the lane between the Macy's NE Parking Lot and the Shuttle Drop Off/Pick Up area. See page 3 for more information.
2. Participants pick up, using the shuttle bus from Central Park, are to be picked up at the northwest parking lot at the Central Park shuttle bus drop off and pick up area.
3. Parade spectators can park at the northwest Macy's lot, as marked in blue, and ride the shuttle to Central Park.



This product is for informational purposes and may not have been prepared for or be suitable for legal, engineering, or surveying purposes. It does not represent an on-the-ground survey and represents only the approximate relative location of geographic features. No warranty is made by the City of College Station regarding specific accuracy or completeness.



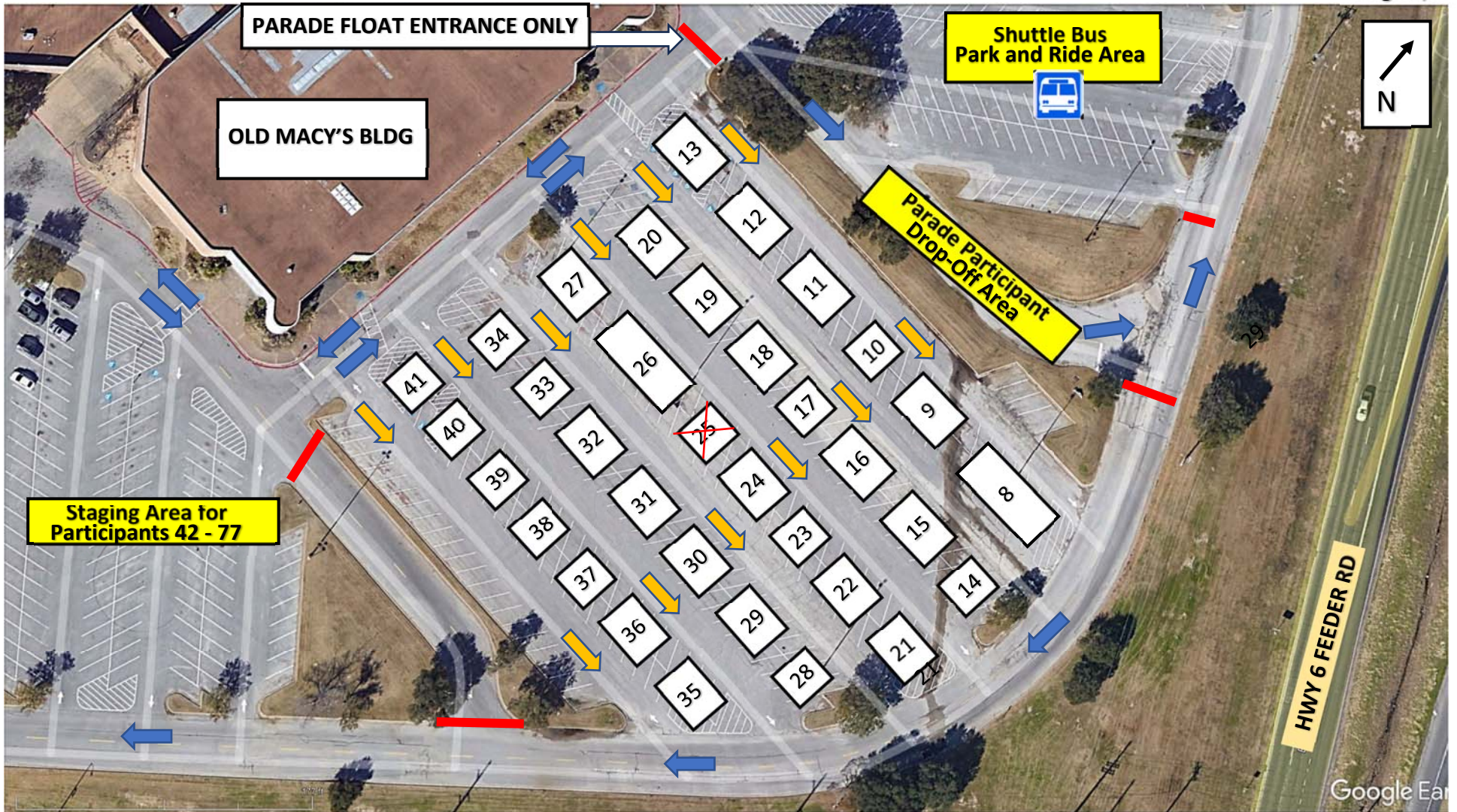
Holleman Drive East Parade Staging

Notes:

1. The attached parade entry staging order list corresponds to order shown on the staging layouts.
2. All staging areas are one-way as shown by yellow arrows. See pages 3 and 4.
3. Participants drop off traffic shall enter on HWY 6 Feeder Road.
4. Participants pick up, using the shuttle bus from Central Park, are to be picked up at the northwest parking lot at the Central Park shuttle bus drop off and pick up area, marked in blue, see page 1.
5. Parade spectators can park at the northwest lot and ride the shuttle to Central Park. See page 1.



This product is for informational purposes and may not have been prepared for or be suitable for legal, engineering, or surveying purposes. It does not represent an on-the-ground survey and represents only the approximate relative location of geographic features. No warranty is made by the City of College Station regarding specific accuracy or completeness.



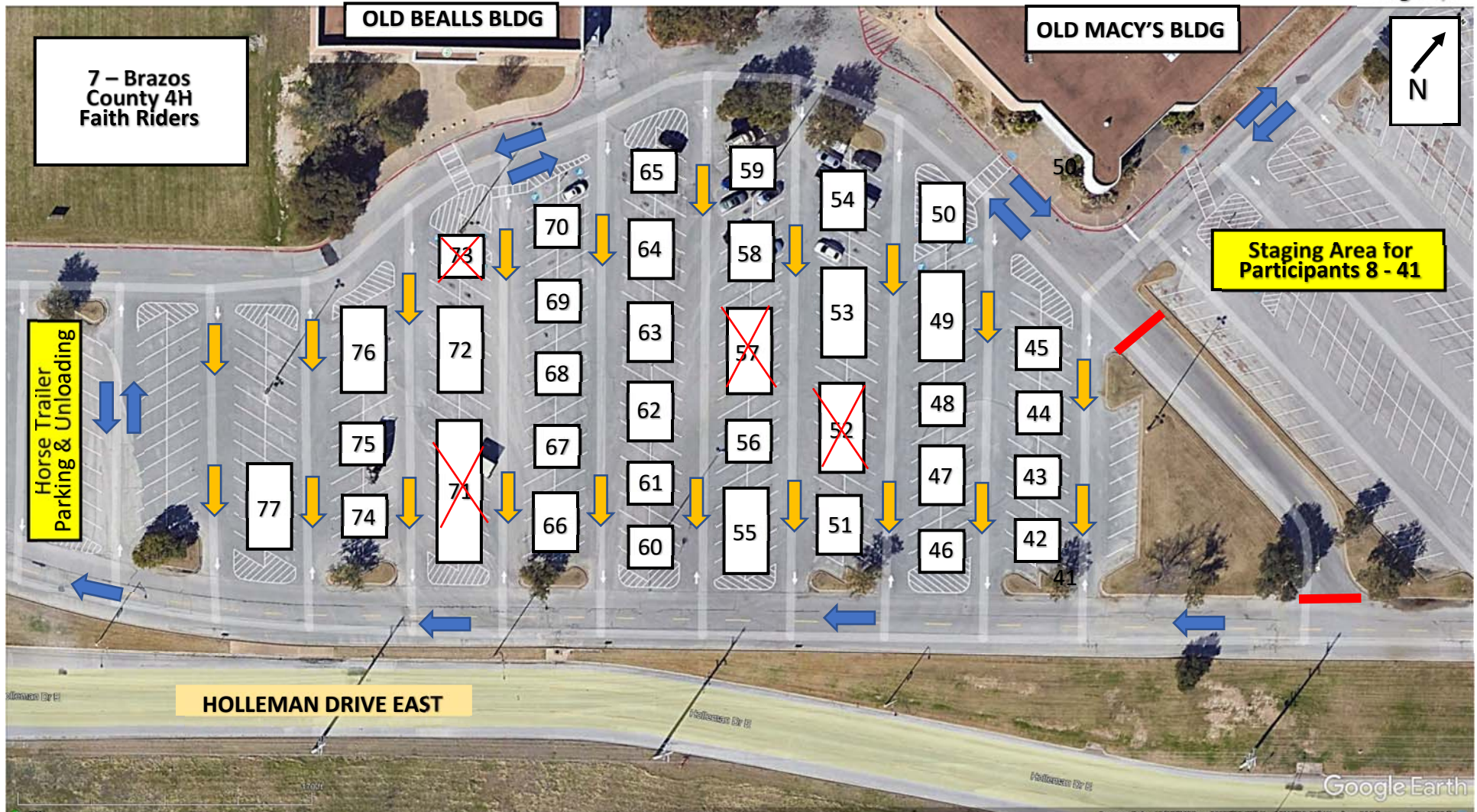
Macy's Northeast Parking Lot Parade Staging

Notes:

1. The attached parade entry staging order list corresponds to order shown on the staging layouts.
2. All staging areas are one-way as shown by yellow arrows.
3. Participants drop off traffic shall enter on HWY 6 Feeder Road.
4. Participants pick up, using the shuttle bus from Central Park, are to be picked up at the northwest parking lot at the Central Park shuttle bus drop off and pick up area, marked in blue, see page 1.
5. Parade spectators can park at the northwest lot and ride the shuttle to Central Park. See page 1.



This product is for informational purposes and may not have been prepared for or be suitable for legal, engineering, or surveying purposes. It does not represent an on-the-ground survey and represents only the approximate relative location of geographic features. No warranty is made by the City of College Station regarding specific accuracy or completeness.



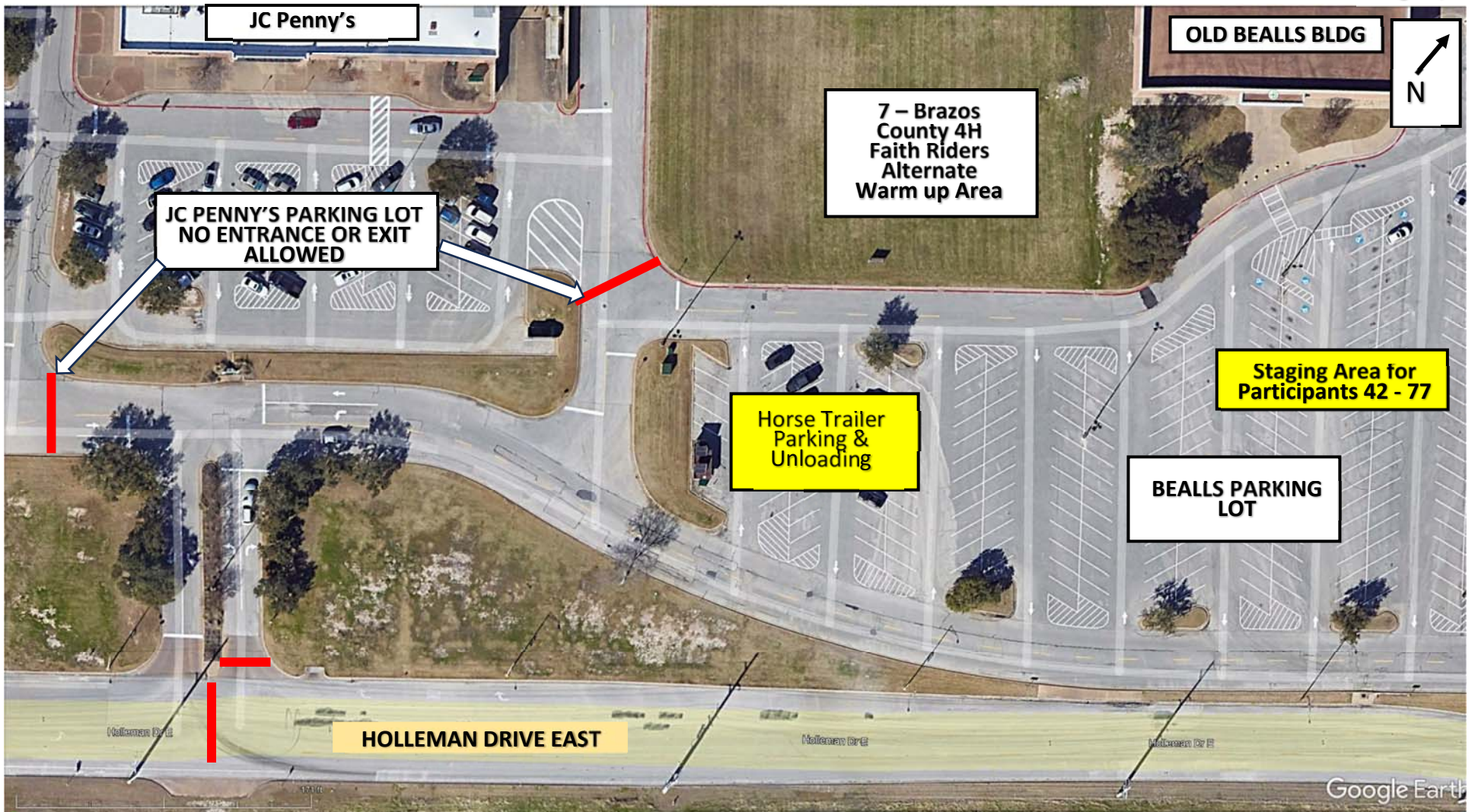
Bealls Parking Lot Parade Staging

Notes:

1. The attached parade entry staging order list corresponds to order shown on the staging layouts.
2. All staging areas are one-way as shown by yellow arrows.
3. Participants drop off traffic shall enter on HWY 6 Feeder Road.
4. Participants pick up, using the shuttle bus from Central Park, are to be picked up at the northwest parking lot at the Central Park shuttle bus drop off and pick up area, marked in blue, see page 1.
5. Parade spectators can park at the northwest lot and ride the shuttle to Central Park. See page 1.



This product is for informational purposes and may not have been prepared for or be suitable for legal, engineering, or surveying purposes. It does not represent an on-the-ground survey and represents only the approximate relative location of geographic features. No warranty is made by the City of College Station regarding specific accuracy or completeness.



JCPENNY'S PARKING LOT

Notes:

1. No entrance or exit will be allowed from the JC PENNY'S parking lot area. This area will be blocked off. Parade float entrance will be from HWY 6 Feeder Road and then from the Macy's NE parking lot.



This product is for informational purposes and may not have been prepared for or be suitable for legal, engineering, or surveying purposes. It does not represent an on-the-ground survey and represents only the approximate relative location of geographic features. No warranty is made by the City of College Station regarding specific accuracy or completeness.



Notes:

Parade Dismount Plan

1. Parade vehicles needing to drop off participants are to continue straight on Krenek Tap Road as shown by the yellow traffic directional arrows.
2. Parade vehicles NOT dropping off participants are to continue straight on Krenek Tap Road as shown by the green traffic directional arrows.
3. All horses turn left on Central Park Lane and will be police escorted back to Post Oak Mall.
4. Participants being dropped off at Krenek Tap Road and NOT staying at Christmas in the Park are to catch the shuttle bus, shown in blue, to get back to Post Oak Mall.
5. Participants being dropped off, not staying for Christmas in the Park, are to be picked up at the northeast parking lot at Post Oak Mall near the shuttle bus drop off and pick up area.



This product is for informational purposes and may not have been prepared for or be suitable for legal, engineering, or surveying purposes. It does not represent an on-the-ground survey and represents only the approximate relative location of geographic features. No warranty is made by the City of College Station regarding specific accuracy or completeness.

PARADE LINEUP ORDER

	Organization
1	Mayor Nichols
2	City Council
3	Aggie Band
4	Ross Volunteer Company, Corps of Cadets, Texas A&M
5	Fish Drill Team
6	Parsons Mounted Cavalry
7	Brazos County 4H Faith Riders
8	R&J Towing and Recovery
9	Legacy Athletics
10	Reveille Realty
11	Strive Health Services
12	Brazos County 4-H
13	Brazos Paving Inc
14	Envy This
15	Beautiful Savior Lutheran Church
16	Blinn College Veterinary Technology Program
17	Aggieland Moving
18	The Bucking Divas
19	Lockett Landscape
20	Barkers Heating, Cooling & Plumbing
21	BDS Towing & Recovery
22	Promises Brazos Valley Alumni
23	International United Miss
24	Jadokwan Taekwon-Do
25	A&M Consolidated HS Cheer

	Organization
26	Brazos Valley A's
27	Brazos Valley Cornerstone Christian Academy
28	College Station A-Team Special Olympics
29	Bryan Elks Lodge 0859
30	A&M Consolidated High School Tiger Softball Team
31	NFL Flag Aggieland
32	The Door Church BCS
33	SureHold Welding LLC
34	DJ Dewayne Entertainment
35	Texas A&M Waterski Team
36	Motion Dance Company
37	StageCenter Community Theatre
38	Powersports Inc.
39	Lucky Dog Wash and Grooming
40	Back 2 New Resurfacing
41	EZ Pro Maintenance
42	Bryan High School Cheer
43	C&R Golf Carts
44	Carabiner Collections
45	Gringo's Mexican Kitchen
46	Scoop Soldiers
47	USSVI Brazos Valley Submarine Veterans
48	The American Red Cross
49	River Bend Elem. RB Steppers
50	Knife River Corporation

	Organization
51	Girl Scouts of Bryan/College Station
52	College Station ISD Transportation Department
53	Oakwell Academy Pep Squad
54	Visit C.S. Economic Development and Tourism
55	Level Up Cuts
56	The Nest
57	H. Bond Construction Inc.
58	Valor Agency
59	Junkluggers of Brazos Valley
60	Lady Pythons Majorette
61	C.S. Police Department
62	C.S. Police Officers Association
63	Cub Scout Pack 62
64	Dailey Company Inc.
65	PAWfection Pet Salon
66	Jackson Hewitt Tax Service
67	St. Joseph EMS
68	St. Joseph Health
69	TAMU Student Government Association
70	Reyes
71	South Knoll Elementary
72	Keep Brazos Beautiful
73	WhistleStop Acres
74	Ghostbuster Mobile
75	Rep. Paul Dyson

	Organization
76	C.S. - Solid Waste Division
77	C. S. Electric Utility
78	
79	
80	
81	
82	
83	
84	
85	
86	
87	
88	
89	
90	
91	
92	
93	
94	
95	
96	
97	
98	
99	
100	