
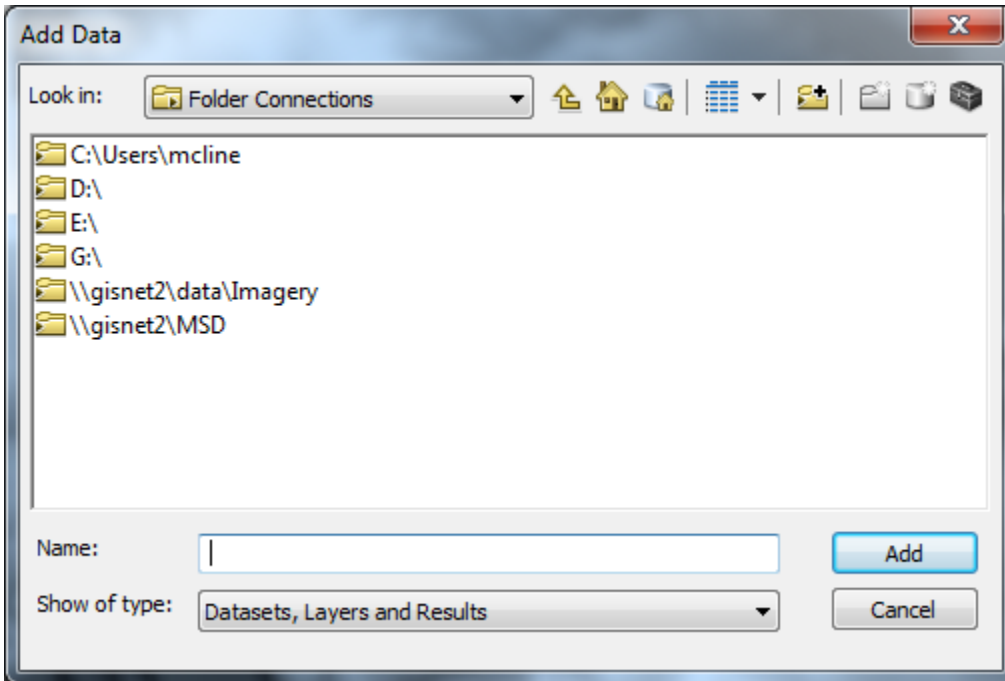


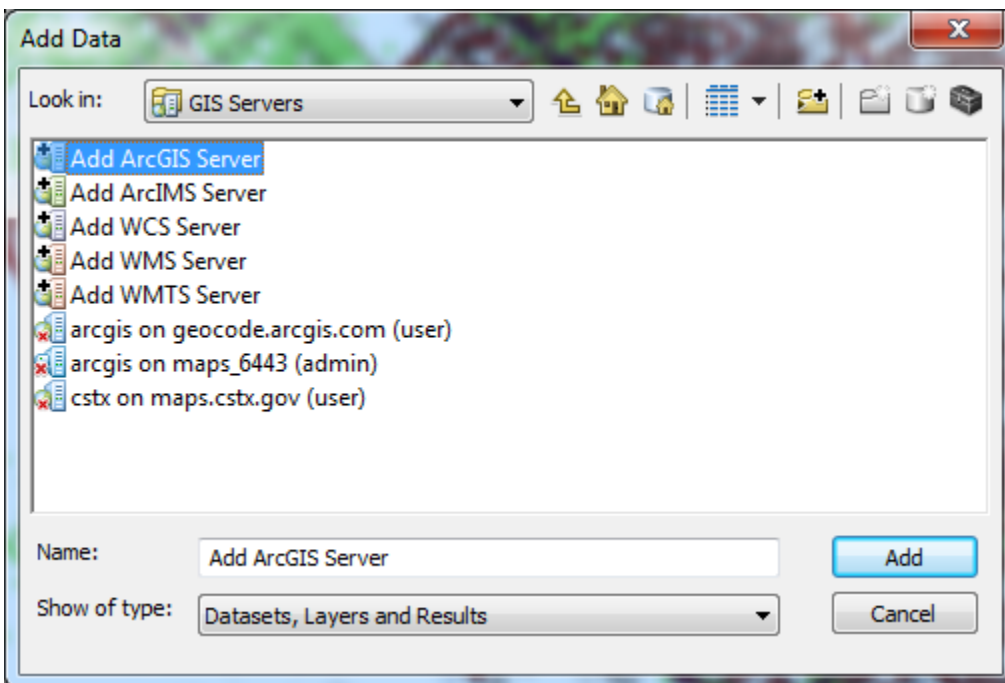
HOW TO CONNECT TO WEB SERVER FOR ONLINE AERIAL IMAGERY

Open ArcGIS and select “Add Data” 

In the “Add Data” box, use the “Look in:” drop down menu, select “GIS Servers”.

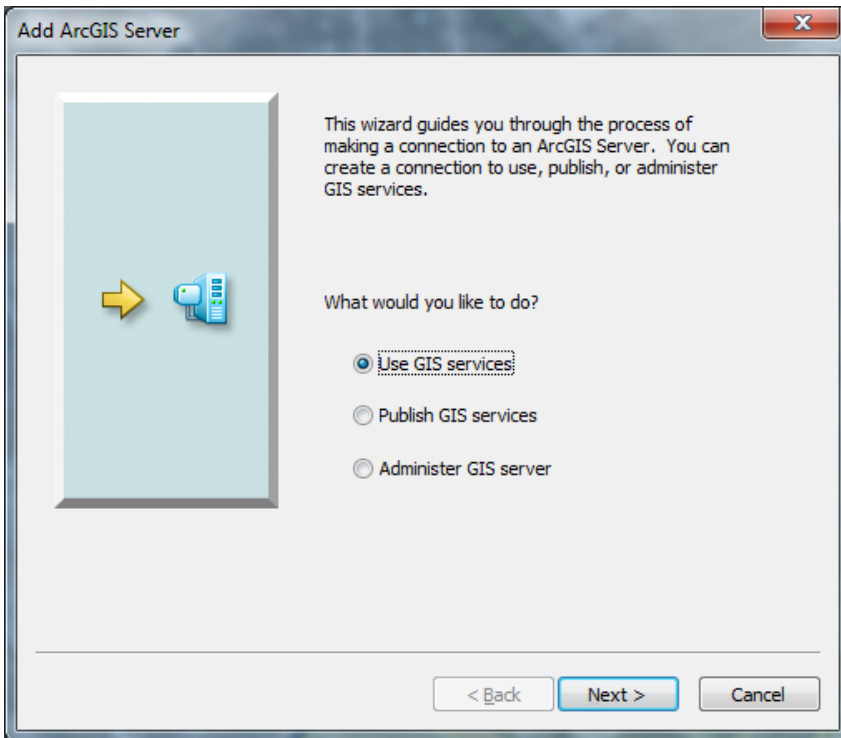


Next, in the “Add Data” box, select “Add ArcGIS Server”.

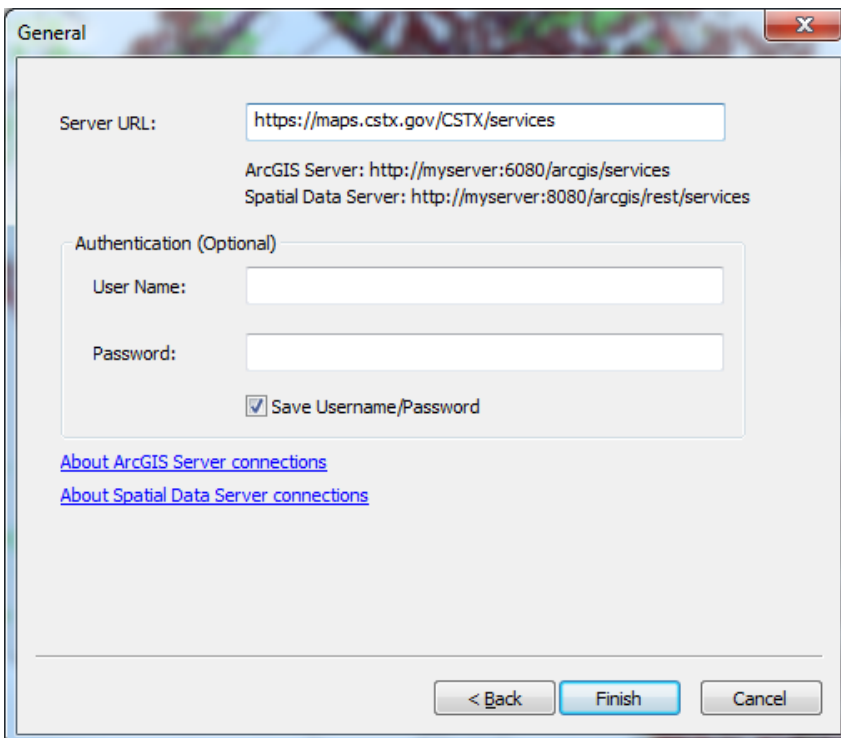


HOW TO CONNECT TO WEB SERVER FOR ONLINE AERIAL IMAGERY

This window will open next. Select “Use GIS services”. Push “Next”.

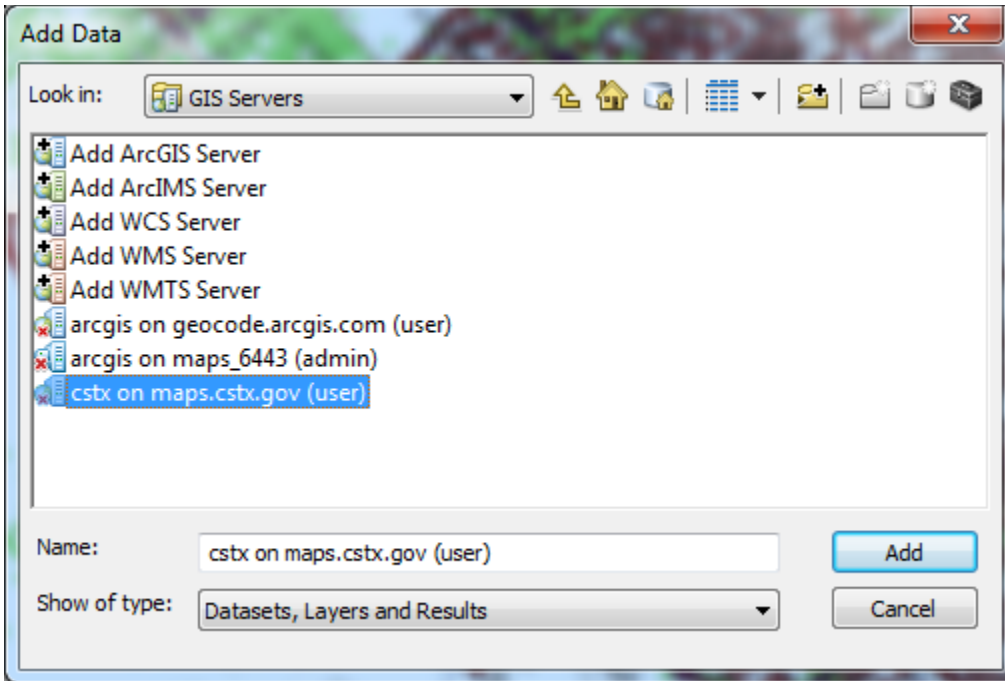


In the “Server URL:” field, type <https://maps.cstx.gov/CSTX/services/> and leave remaining fields blank.



HOW TO CONNECT TO WEB SERVER FOR ONLINE AERIAL IMAGERY

The “Add Data” box should now include “CSTX on maps.cstx.gov (user)”. Double click “CSTX on maps.cstx.gov (user)”.



The “Add Data” box should now show the services hosted on the City of College Station web server. You can now add any of this data directly into any personal map projects.

Select the desired “Cached_Aerial” layer (named with year imagery was collected) and add it to your open map project. Now you will have aerial imagery of the City in your map.

